

# MARINA RESERVE MASTER PLAN

Preliminary Site Analysis Presentation

## ***‘A Park for Everyone’***

Includes comment made at community  
consultation session 23.03.10

*Part 2*

Marina Reserve

*...a park for everyone!*

**ENVIE**  
DESIGN

# SITE ASSESSMENT



Marina Reserve

*...a park for everyone!*

**CONVIC**  
DESIGN



# MARINA RESERVE

Marina Reserve

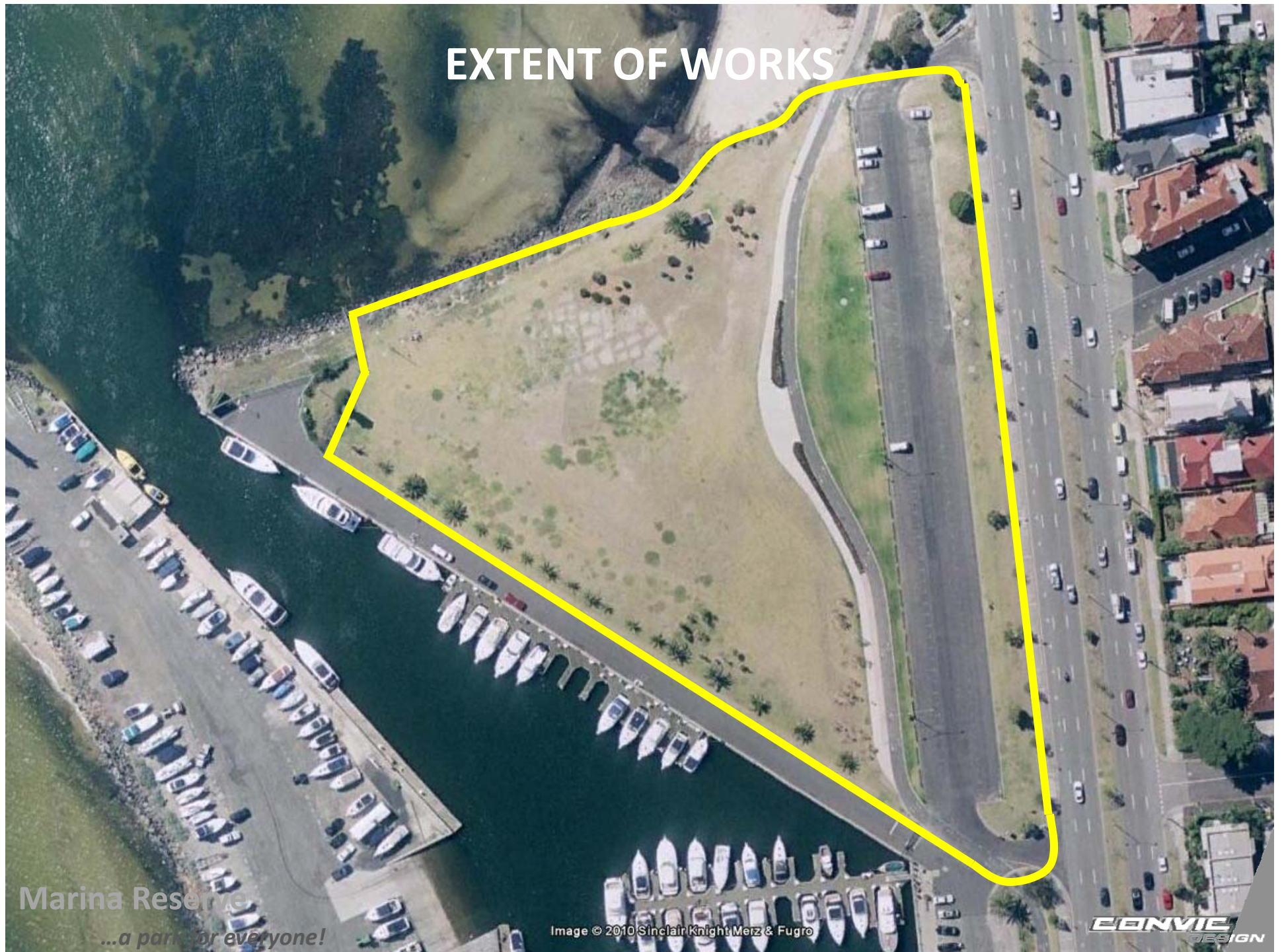
*...a park for everyone!*

Image © 2010 Sinclair Knight Merz & Fugro

**CONVIC**  
DESIGN



# EXTENT OF WORKS



Marina Reserve

*...a park for everyone!*

Image © 2010 Sinclair Knight Merz & Fugro

**CONVIC**  
DESIGN



# WHAT MAKES UP MARINA RESERVE?



Marina Reserve

*...a park for everyone!*

**CONVIC**  
DESIGN



# PATH NETWORK

## ISSUES

- No access to the whole park
- Divides site
- Constant movement

## OPPORTUNITIES

- Improved shared pedestrian/cycle access through & within park
- Shared space for multiple uses & users
- Enhancing existing connections through & to the site
- Greater user responsibility
- Improved safety

Marina Reserve

*...a park for everyone!*



# LARGE OPEN LAWN

## ISSUES

- Significant wind impact
- Lack of shade
- Creeping sand
- Lack of amenity

## OPPORTUNITIES

- Large open space
- No designated use
- Maximise views back to foreshore
- Passive/active potential
- Capacity for crowds
- Cater for multiple uses
- Room for a mix of new facilities
- Potential event space

Marina Reserve

*...a park for everyone!*

**CONVIC**  
DESIGN



# CARPARK

## ISSUES

- Single use
- No protection from the elements
- No WSUD considerations
- Spatial requirements/limitations
- Does it operate at capacity?
- Takes up large area of space
- Have to cross main path to access reserve
- Current hoon activity

## OPPORTUNITIES

- Large area
- Able to be re-oriented?
- Maximise usage
- WSUD opportunities
- Existing hardscape
- Connection to Marine Parade
- Long term function
- Discourage hoon activity

Marina Reserve

*...a park for everyone!*



# PROMENADE ENTRANCE

## ISSUES

- Narrow
- Exposed
- Creeping sand
- No connection to rest of reserve

## OPPORTUNITIES

- Strengthen entrance from promenade to site
- Create gateway to St Kilda
- Connection to beach & water
- Improve connection to surrounds
- Extend promenade intent to reserve

Marina Reserve

*a park for everyone!*

**CONVIC**  
DESIGN



# MARINA ENTRANCE

## ISSUES

- Vehicular access required
- Cycle/pedestrian/vehicle conflict

## OPPORTUNITIES

- Possible gateway to St Kilda
- Provide clearer entrance to site & open space
- Improve carpark access
- Improve cycle/pedestrian/vehicle conflict

Marina Reserve

*...a park for everyone!*

**CONVIC**  
DESIGN



# ROCK EDGE

## ISSUES

- Large drain
- Smell of drain
- Rocks potential hazard
- Lack of water access

## OPPORTUNITIES

- Connect to water
- Water play
- Improved viewing & seating
- WSUD & environmental improvements
- Improve habitat
- Passive/active opportunities

Marina Reserve

*...a park for everyone!*

**CONVIC**  
DESIGN



# MARINA FENCE

## ISSUES

- Visually intrusive?
- Marina security?
- Lack of connection between Marina & reserve

## OPPORTUNITIES

- Visual link to Marina
- Potential backdrop to park
- Improve aesthetics of fence

Marina Reserve

*a park for everyone!*

**CONVIC**  
DESIGN



# VEGETATION

## ISSUES

- Coastal environment limits species selection
- Harsh climatic conditions

## OPPORTUNITIES

- Provide shade
- Local & indigenous species
- Textural qualities
- Improve habitat
- Attract & support fauna
- Provide educative experience

Marina Reserve

*...a park for everyone!*

**CONVIC**  
DESIGN



# AMENITY

## ISSUES

- Limited seating
- Limited BBQ's
- Limited all abilities access
- No toilets
- No drinking fountain
- No shade / shelter
- No bike racks

## OPPORTUNITIES

- Provide shade / shelter
- Provide toilets?
- Improve seating
- Improve access
- Improve bins
- Provide drinking fountain
- Provide bike racks

Marina Reserve

*a park for everyone!*

**CONVIC**  
DESIGN



# WEATHER STATION

## ISSUES

- Requires fence?
- Isolated
- Limits access to point

## OPPORTUNITIES

- Educative/informative
- Local
- Improved access

Marina Reserve

*...a park for everyone!*

**CONVIC**  
DESIGN



# ARTWORK

## ISSUES

- Location?

## OPPORTUNITIES

- Iconic
- Educative
- Possible other art in the reserve?
- Local contribution

Marina Reserve

*...a park for everyone!*

**CONVIC**  
DESIGN



# OTHER CONSIDERATIONS

## ISSUES

- Lighting across park
- Pedestrian access across Marine Pde.
- Impacts of jet skis (noise & user behaviour)
- Camping within reserve
- ANYTHING ELSE?

## OPPORTUNITIES

- Improve lighting
- Improve pedestrian access across Marine Pde.
- ANYTHING ELSE?

Marine Reserve  
A park for everyone!



*intentionally left blank*



# COMMUNITY CONSULTATION TO DATE

- **Website Surveys** - <http://www.portphillip.vic.gov.au>
- **Have Your Say Website** - [http://www.portphillip.vic.gov.au/marina\\_reserve\\_masterplan.htm](http://www.portphillip.vic.gov.au/marina_reserve_masterplan.htm)
- **On-site surveys**
- **School Workshops**

**Marina Reserve**

*...a park for everyone!*



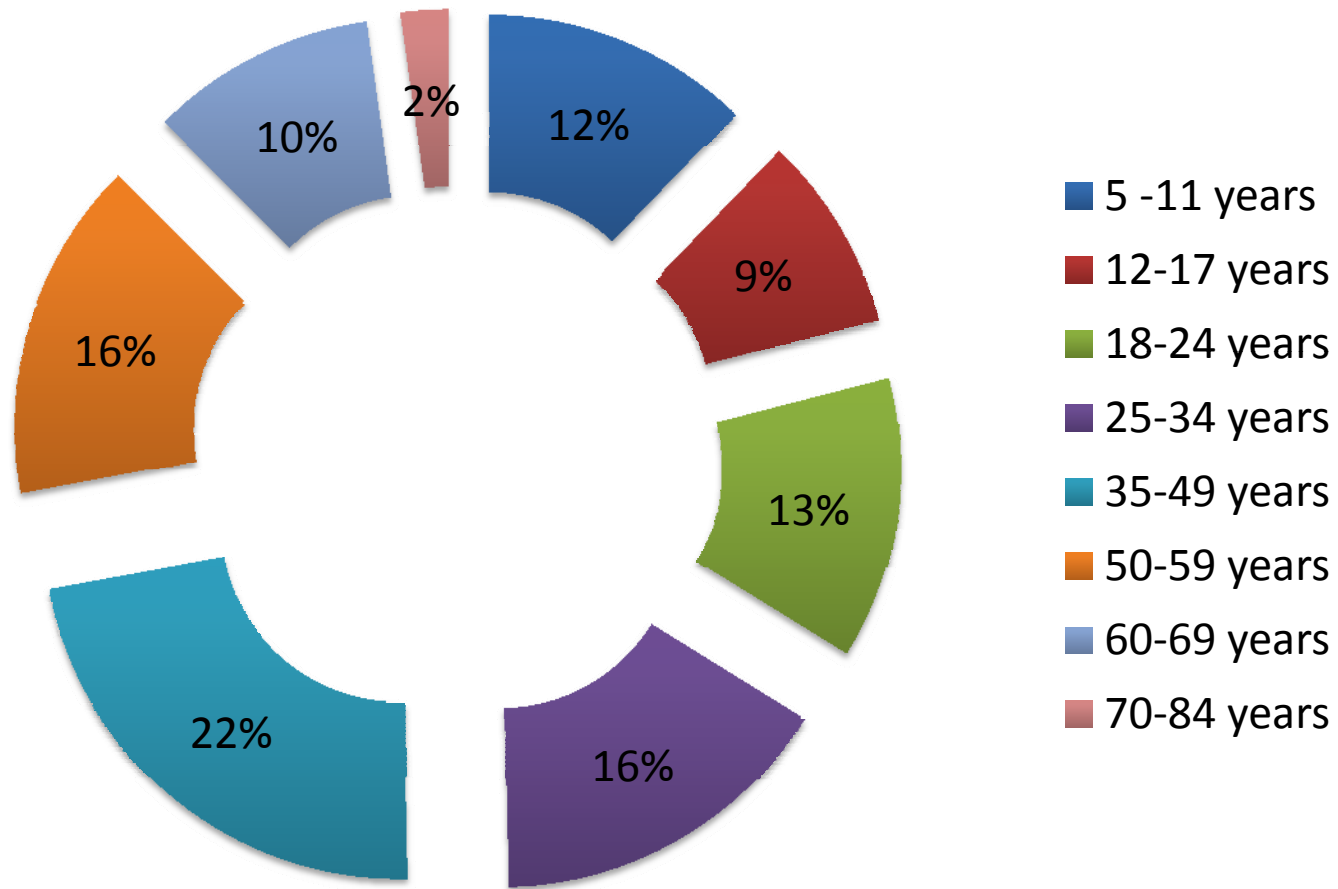


# INITIAL SURVEY RESULTS

- 272 completed surveys to date
- A range of information collected that will be now be used to inform the masterplan process



## AGE OF RESPONDENTS



Marina Reserve

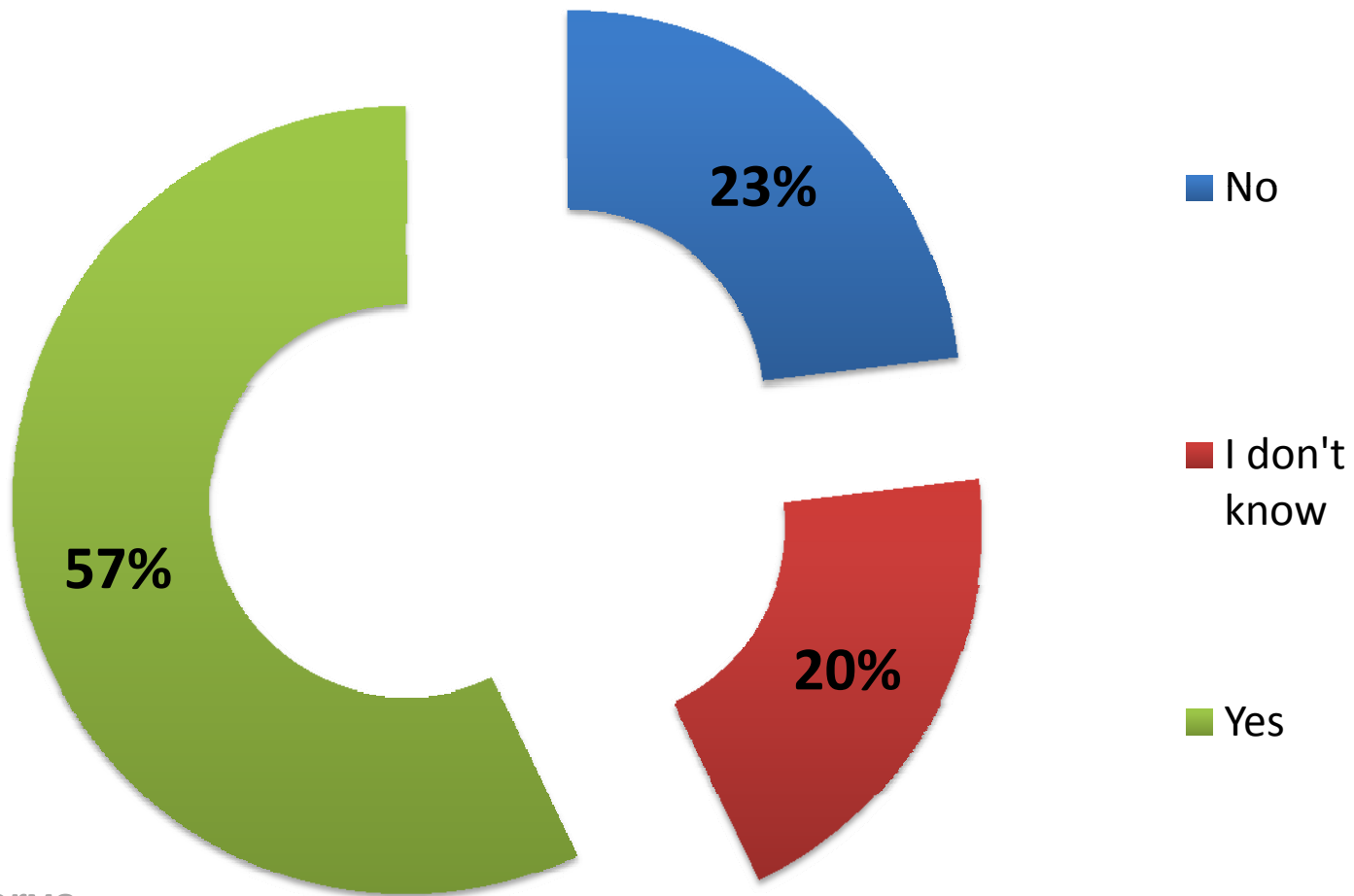
*...a park for everyone!*





## QUESTION 3 RESPONSE

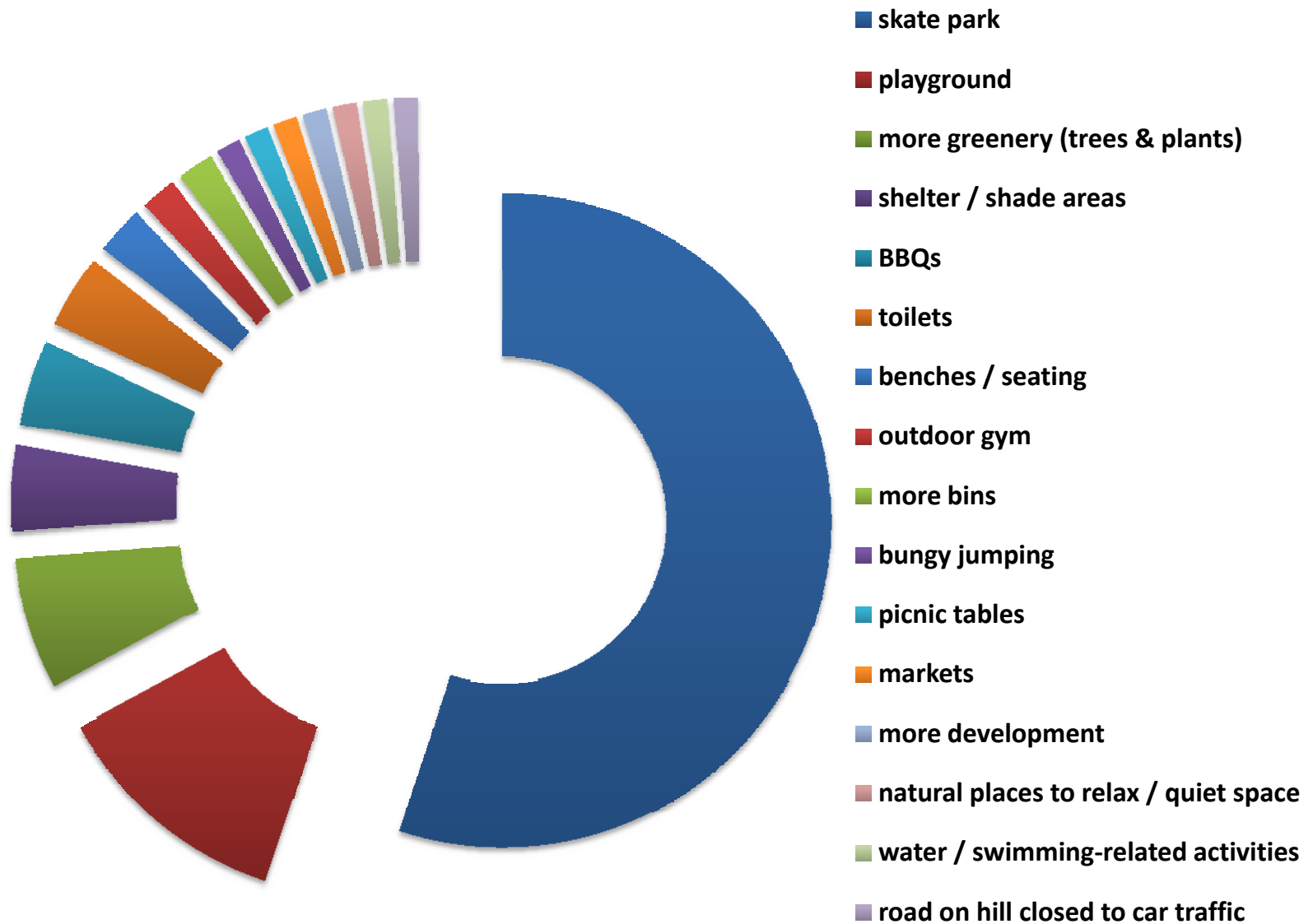
- Are there any recreational opportunities you would like to see that are currently missing from Marina Reserve



Marina Reserve  
*...a park for everyone!*



## ANSWERS TO QUESTION 3.



Marina Reserve

*...a park for everyone!*



# SCHOOL WORKSHOPS

- 5 very positive sessions at local schools, speaking to over 100 children
- 3 Primary Schools, 2 Secondary Schools
- Similar format to today, *'A Park for Everyone'*
- Some interesting/unusual ideas included;
  - **a rollercoaster**
  - **a paint ball area**
  - **a dune buggy racecourse**
  - **a silent disco**
- Some of the more popular suggestions included;
  - **outdoor cinema**
  - **sea pool**
  - **skatepark**
  - **adventure playground**
  - **basketball court**
  - **picnic area**

Marina Reserve

*...a park for everyone!*





# QUESTIONS ASKED AT SCHOOL WORKSHOPS

Where do you currently hang out in St. Kilda?

Why do you go there?

What's good about this place?

What's bad about this place?

Where do you go on holidays?

Why do you go there?

What's good about this place?

What's bad about this place?

What technologies do you use or are interested in?

Other than sport, what other activities do you enjoy doing?

What are the 3 favourite things you do at school with friends?

**What is not available on the St. Kilda foreshore that you think would be fun or you would use?**

**What features would you include in a whole park for everyone at Marina Reserve?**

**RESPONSES TO THE LAST TWO QUESTIONS ON THE FOLLOWING PAGES**

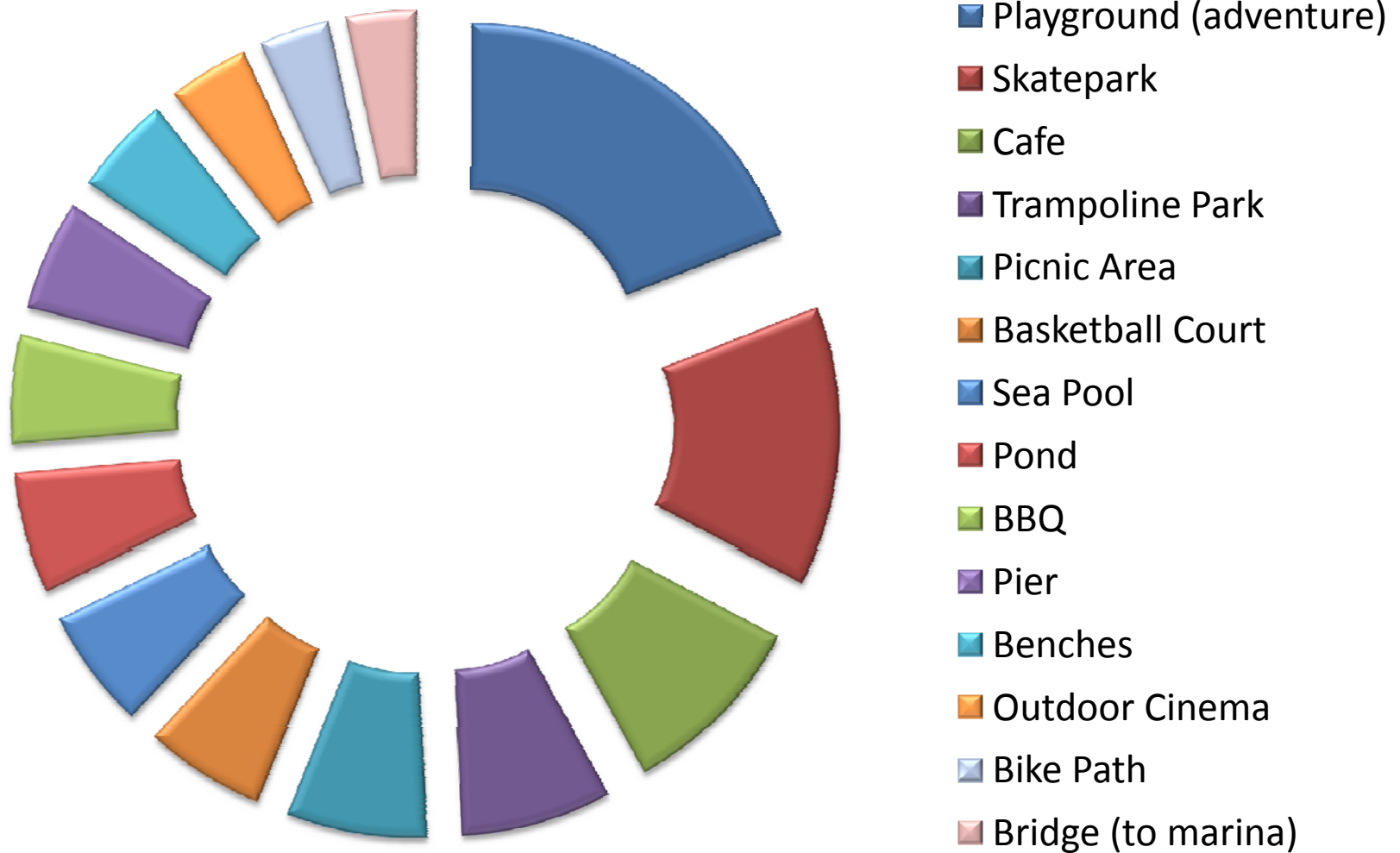
Marina Reserve

*...a park for everyone!*





## PRIMARY SCHOOLS (TOP 14 ANSWERS)

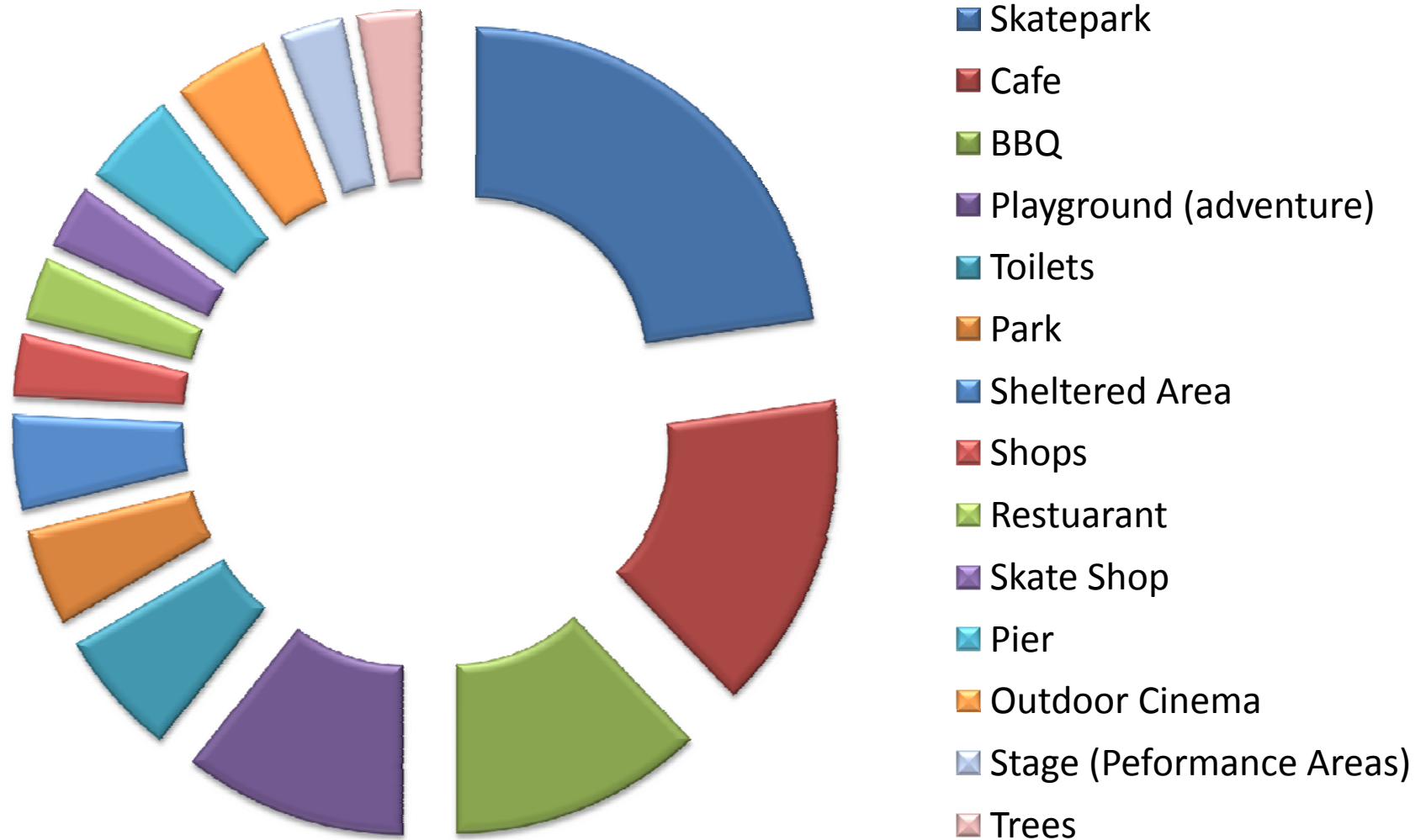


Marina Reserve

*...a park for everyone!*



## SECONDARY SCHOOLS (TOP 14 ANSWERS)



Marina Reserve

*...a park for everyone!*



## COMBINED RESULTS (TOP 15 ANSWERS)



- Skatepark
- Playground (adventure)
- Cafe
- BBQ/Picnic Area
- Sea Pool
- Trampoline Park
- Pier
- Basketball Court
- Benches
- Pond
- Outdoor Cinema
- Toilets
- Bike Path
- Bridge (to marina)
- Stage (Performance Areas)

Marina Reserve

*...a park for everyone!*