

MARINA RESERVE MASTER PLAN

Draft Masterplan

‘A Park for Everyone’

draft Marina Reserve Masterplan information session

14.07.10

Marina Reserve

...a park for everyone!

EDVIE
DESIGN

CONVIC DESIGN



Award Winning Design Practice

Key Skills

- Landscape Architecture
- Reserve Masterplanning
- Integrated Youth & Skate Space Provision
- Whole of Community Public Domain Design

Marina Reserve

...a park for everyone!



OUR APPROACH

- Designing multiple use, flexible public spaces
- Intergenerational, inclusive spaces
- Innovative and integrated design solutions
- WSUD (Water Sensitive Urban Design)
- Robust, durable, vandal resistant materials
- Active spaces
- Contextual appreciation

WHAT IS A MASTERPLAN?

- A long term strategic plan for the ongoing development and use of a public park over a predetermined time line.
- It provides clear direction for ESD considerations, current & future use, maintenance, management & redevelopment (as applicable).

WHY A PARK FOR EVERYONE?

Marina Reserve is a public park & we want to ensure everyone has the potential opportunity to enjoy using the space, facilities and activities it has to offer.

- **Whole of community use**
- **Social opportuntiiies**
- **Family use**
- **Intergenerational connection**
- **Multiple uses**
- **Inclusive rather than exclusive activities**

WHAT IS A PARK FOR EVERYONE?

Essentially, all public space is provided for everyone in the community to appropriately use.

- All cultures
- All age groups
- Locals
- Tourists
- All abilities
- Inclusive
- Integrated
- Welcoming

Marina Reserve

...a park for everyone!



COMMUNITY CONSULTATION TO DATE

Website Surveys -

<http://www.portphillip.vic.gov.au>

Have Your Say Website -

http://www.portphillip.vic.gov.au/marina_reserve_masterplan.htm

Survey results available on the website from tomorrow morning

On-site surveys

School Workshops

Community Workshop No. 1

Community Workshop No. 2

Marina Reserve

...a park for everyone!



DRAFT MARINA RESERVE MASTERPLAN

Purpose of the information session tonight is;

To properly explain the draft masterplan

Answer any questions you may have

EXISTING CONDITIONS



Marina Reserve

...a park for everyone!

EXISTING CONDITIONS



Marina Reserve

...a park for everyone!

EDNIE
DESIGN

DRAFT MARINA RESERVE MASTERPLAN



Marina Reserve

...a park for everyone!

EDNIE
DESIGN

DRAFT MARINA RESERVE MASTERPLAN



Marina Reserve

...a park for everyone!

EDNIE
DESIGN

PATH NETWORK

ISSUES

No access to the whole park

Divides site

Constant movement

OPPORTUNITIES

Improved shared pedestrian/cycle access through & within park

Shared space for multiple uses & users

Enhancing existing connections through & to the site

Greater user responsibility

Improved safety

Marina Reserve

...a park for everyone!

CONVIC
DESIGN

PATH NETWORK

CONSULTATION FEEDBACK

Improve access

Removal of shared pathway

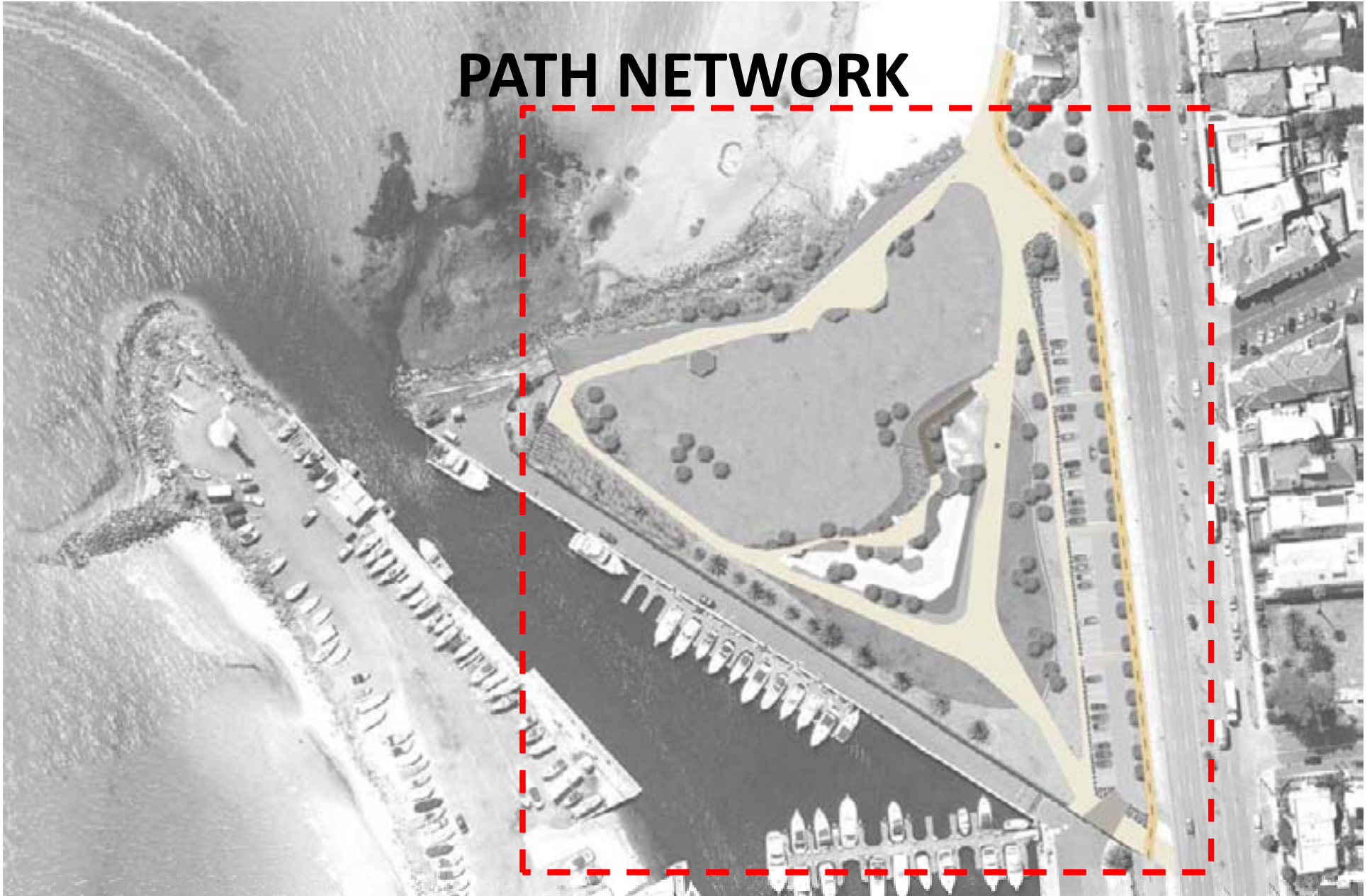
Separate commuter cyclist pathway

Marina Reserve

...a park for everyone!

EDNIE
DESIGN

PATH NETWORK



Marina Reserve

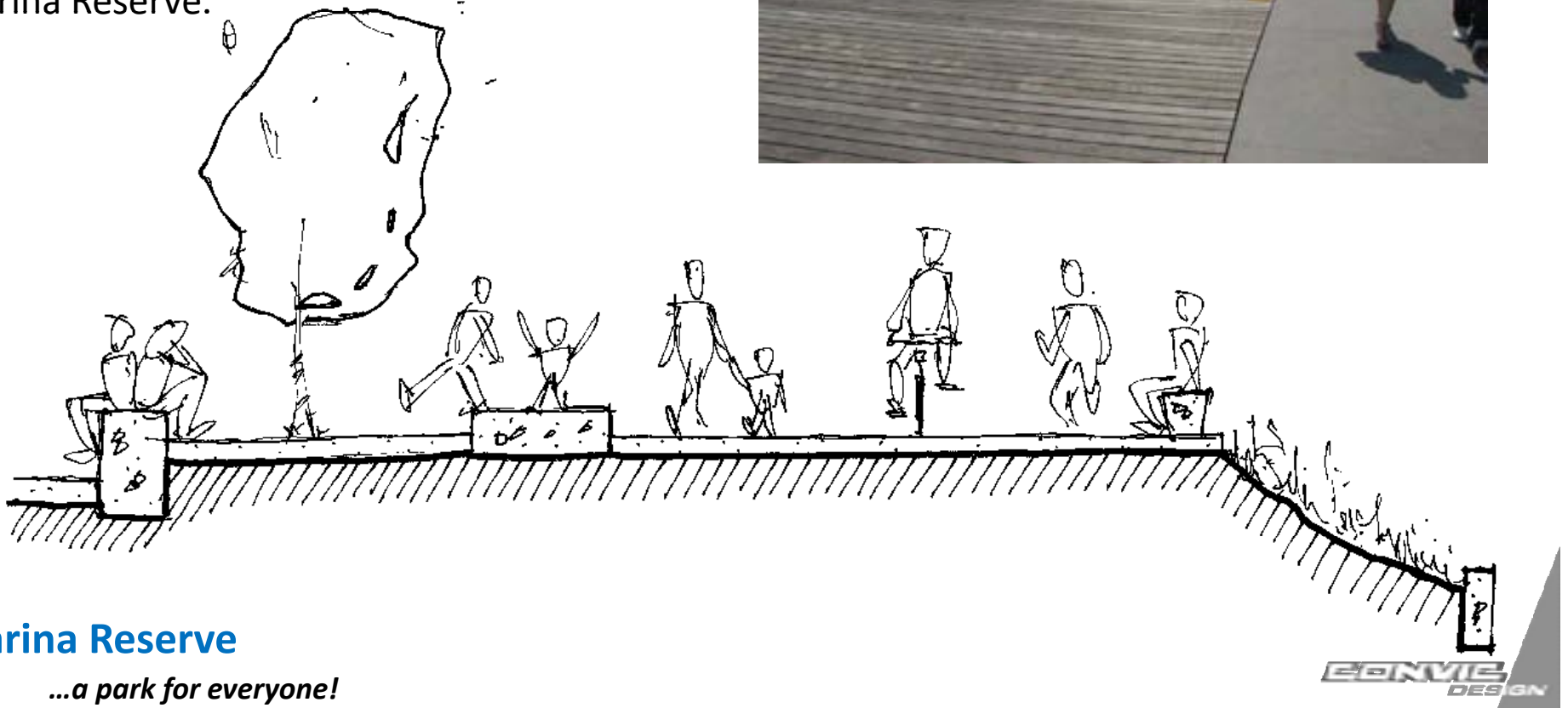
...a park for everyone!

PATH NETWORK

The existing pathways on St. Kilda Promenade allow people to engage with the network in many different ways.



Indicative section of the pathway network within Marina Reserve.



Marina Reserve

...a park for everyone!

EDVIN
DESIGN

PATH NETWORK

MASTER PLAN ACTIONS

Provision of all abilities shared access path

Enhances existing connections through & to the site

Creates greater shared user responsibility as per promenade precedent

Allows for commuter cycling on edge of reserve

Provides for maintenance access to beach

Marina Reserve

...a park for everyone!

EDNVIE
DESIGN

LARGE OPEN LAWN

CONSULTATION FEEDBACK

Keep open space

Do not over design

No net loss of open space

Provide a visual pause

Marina Reserve

...a park for everyone!

EDNVIE
DESIGN

LARGE OPEN LAWN



Marina Reserve

...a park for everyone!

EDNIE
DESIGN

LARGE OPEN LAWN



The lawn area will help Marina Reserve maintain the sense of open space at the site.

Marina Reserve

...a park for everyone!



LARGE OPEN LAWN

MASTER PLAN ACTIONS

Relocation of existing mound to southern edge of reserve to improve available open space

Retains large open space (approx 1/3 oval in scale)

Maximises views back to foreshore

Allows for passive/active use

Provides potential event space

Marina Reserve

...a park for everyone!

EGNVIE
DESIGN

CARPARK

ISSUES

- Single use
- No protection from the elements
- No WSUD considerations
- Spatial requirements/limitations
- Does it operate at capacity?
- Takes up large area of space
- Have to cross main path to access reserve
- Current hoon activity

OPPORTUNITIES

- Large paved area
- Able to be re-oriented?
- Maximise usage
- WSUD opportunities
- Connection to Marine Parade
- Long term function
- Discourage hoon activity

Marina Reserve

...a park for everyone!

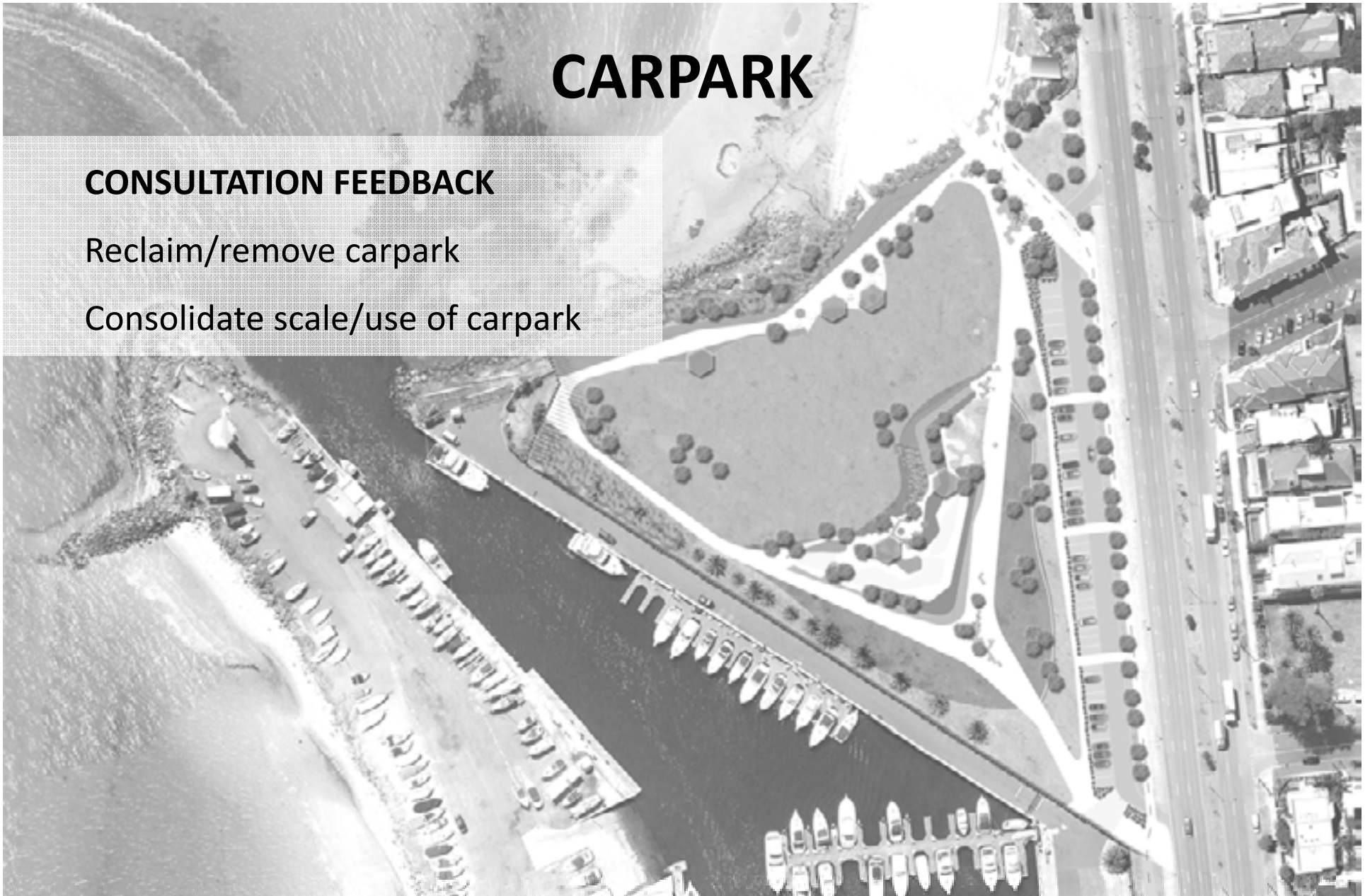
CONVIC
DESIGN

CARPARK

CONSULTATION FEEDBACK

Reclaim/remove carpark

Consolidate scale/use of carpark



Marina Reserve

...a park for everyone!

EDNIE
DESIGN

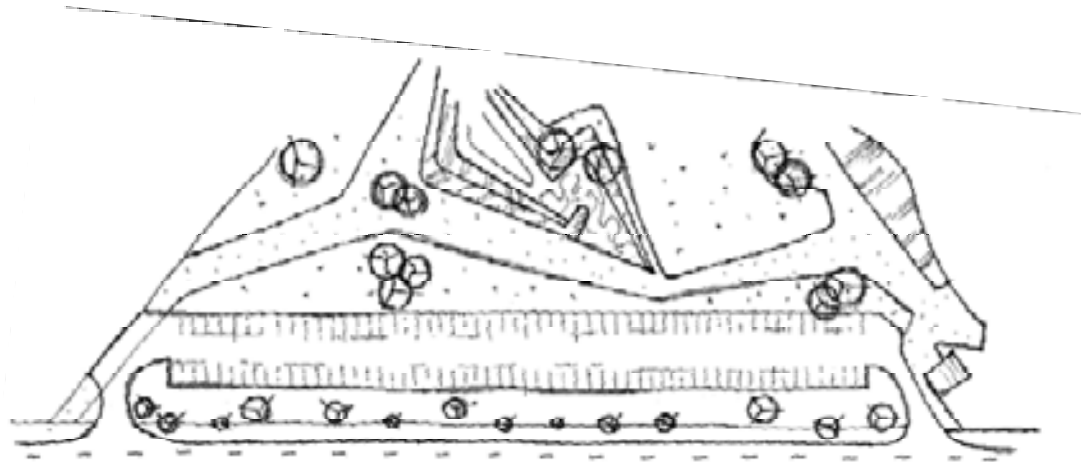
An aerial photograph of a coastal area. On the left is a body of water with a marina containing many small boats. A peninsula or breakwater extends into the water. To the right of the water is a large, irregularly shaped area outlined by a red dashed rectangle. This area contains a mix of green space with trees and a paved area labeled 'CARPARK'. To the right of the red rectangle is a residential street with houses and parked cars. The word 'CARPARK' is written in large, bold, black capital letters at the top center of the image.

CARPARK

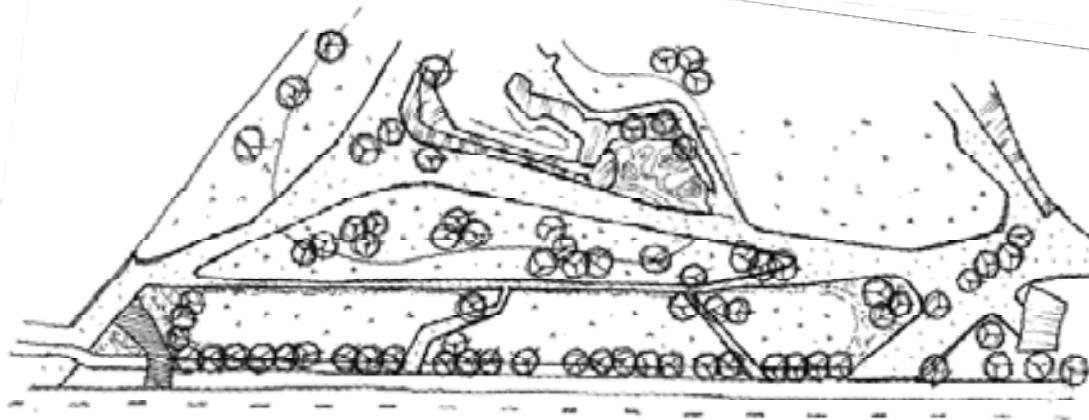
Marina Reserve

...a park for everyone!

CARPARK



Existing car park format.

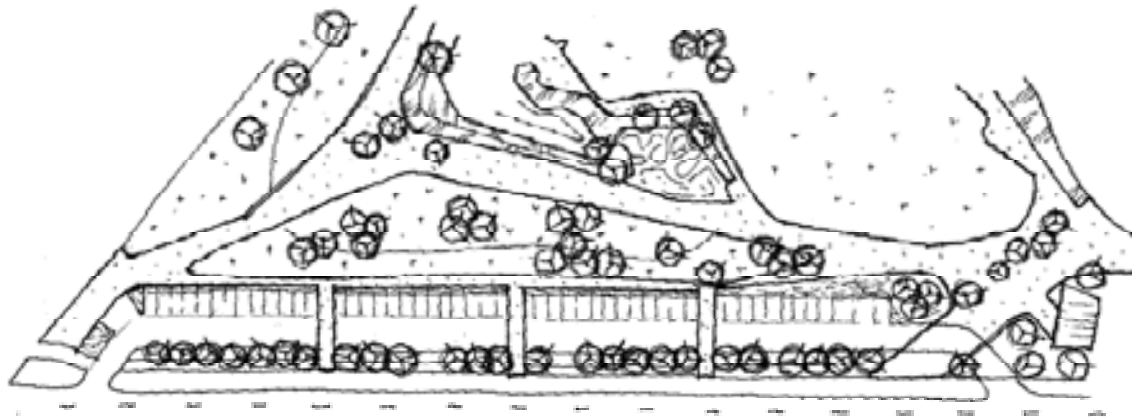


No car parking option.

Marina Reserve

...a park for everyone!

CARPARK

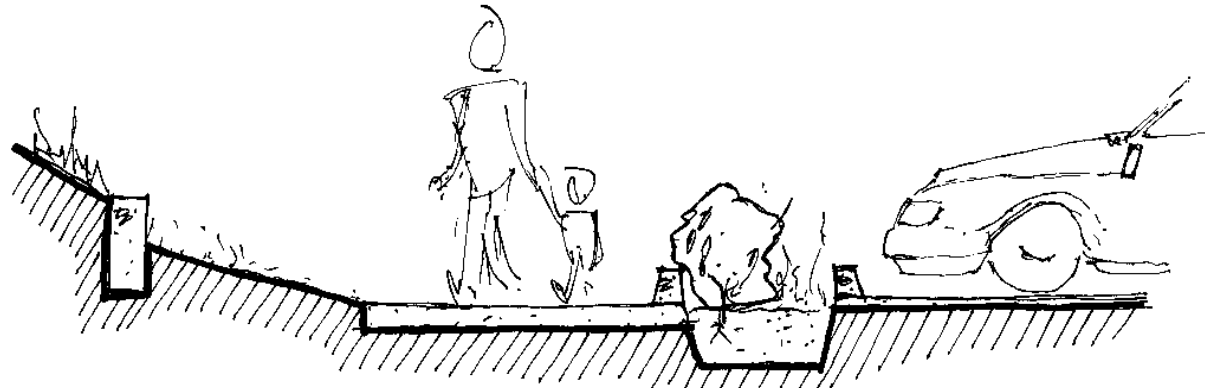


Preferred car parking option.

Marina Reserve

...a park for everyone!

CARPARK



Indicative section of rain garden in car park.



Example images of rain gardens serving as WSUD elements within car parks.

Marina Reserve

...a park for everyone!

An aerial photograph showing the Marina Reserve carpark layout. The carpark is a linear configuration situated between a body of water (Marine Pde) and a residential area. The layout includes a series of parking spaces, a central access road, and a buffer zone. The text 'CARPARK' is overlaid in large, bold, black letters at the top center.

CARPARK

MASTER PLAN ACTIONS

Linear car park configuration retained

Reduced number of car spaces from 122 to 50

Size of car park reduced by over half (approx 1800 sq/m)

Caters primarily for Marina Reserve

WSUD embedded in layout

Provides buffer from Marine Pde.

Layout discourages hoon activity (speed bumps etc)

Marina Reserve

...a park for everyone!

EGNIE
DESIGN

PROMENADE ENTRANCE

ISSUES

Narrow

Exposed

Creeping sand

No connection to rest of reserve

OPPORTUNITIES

Strengthen entrance from promenade to site

Create gateway to St Kilda

Connection to beach & water

Improve connection to surrounds

Extend promenade intent to reserve

Marina Reserve

...a park for everyone!

CONVIC
DESIGN



PROMENADE ENTRANCE

MASTER PLAN ACTIONS

- Strengthen access from promenade to reserve
- Create gateway to St Kilda
- Slows down through traffic to promote safety
- Provide through cyclist temporary path
- Provides mix of social seating spaces & defined skateable infrastructure

Marina Reserve

...a park for everyone!

EDNVIC
DESIGN

PROMENADE ENTRANCE

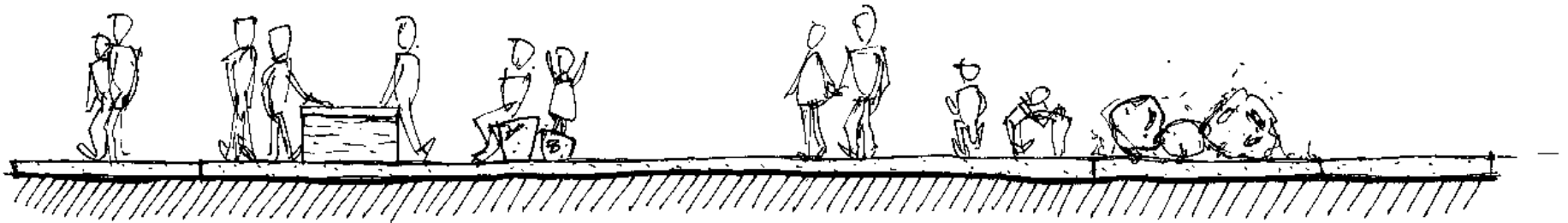


Marina Reserve

...a park for everyone!

EDNIE
DESIGN

PROMENADE ENTRANCE



Indicative section of the increased width at the promenade entrance, allowing for multiple activities, both passive and active.

Marina Reserve

...a park for everyone!

PROMENADE ENTRANCE

MASTER PLAN ACTIONS

- Strengthen access from promenade to reserve
- Create gateway to St Kilda
- Slows down through traffic to promote safety
- Provide through cyclist temporary path
- Provides mix of social seating spaces & defined skateable infrastructure

Marina Reserve

...a park for everyone!

EGNVIE
DESIGN

MARINA ENTRANCE

ISSUES

Vehicular access required
Cycle/pedestrian/vehicle
conflict

OPPORTUNITIES

Possible gateway to St Kilda
Provide clearer entrance to site
& open space
Improve carpark access
Improve cycle/pedestrian/vehicle
conflict

Marina Reserve

...a park for everyone!

CONVIC
DESIGN

MARINA ENTRANCE

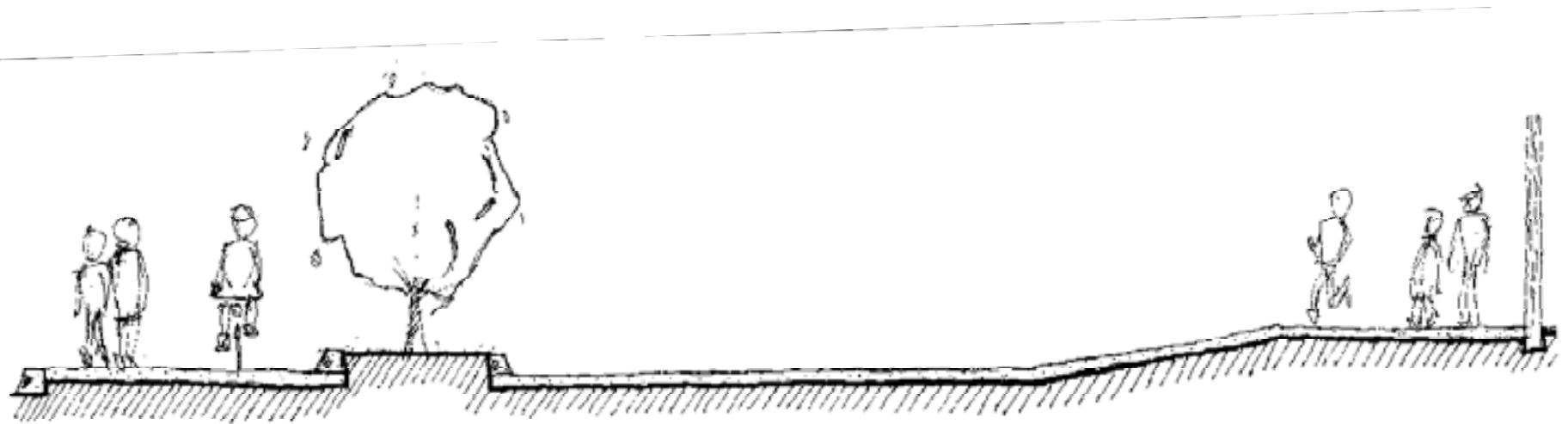


Marina Reserve

...a park for everyone!

EDNIE
DESIGN

MARINA ENTRANCE



Indicative section of the expanded Marina entrance highlighting the raised pedestrian crossing and separate cycle path.

Marina Reserve

...a park for everyone!

MARINA ENTRANCE

MASTER PLAN ACTIONS

Provides much clearer entry to Marina Reserve

Improves safety at intersection to Marina carpark

Minimizes cycle/pedestrian/vehicle conflict

Marina Reserve

...a park for everyone!

EGNVIE
DESIGN

ROCK EDGE

ISSUES

Large drain

Smell of drain

Rocks potential hazard

Lack of water access

OPPORTUNITIES

Connect to water

Water play

Improved viewing & seating

WSUD & environmental

improvements

Improve habitat

Passive/active opportunities

Marina Reserve

...a park for everyone!

CONVIC
DESIGN

ROCK EDGE

CONSULTATION FEEDBACK

Develop Northern edge rock wall

Boardwalk around perimeter

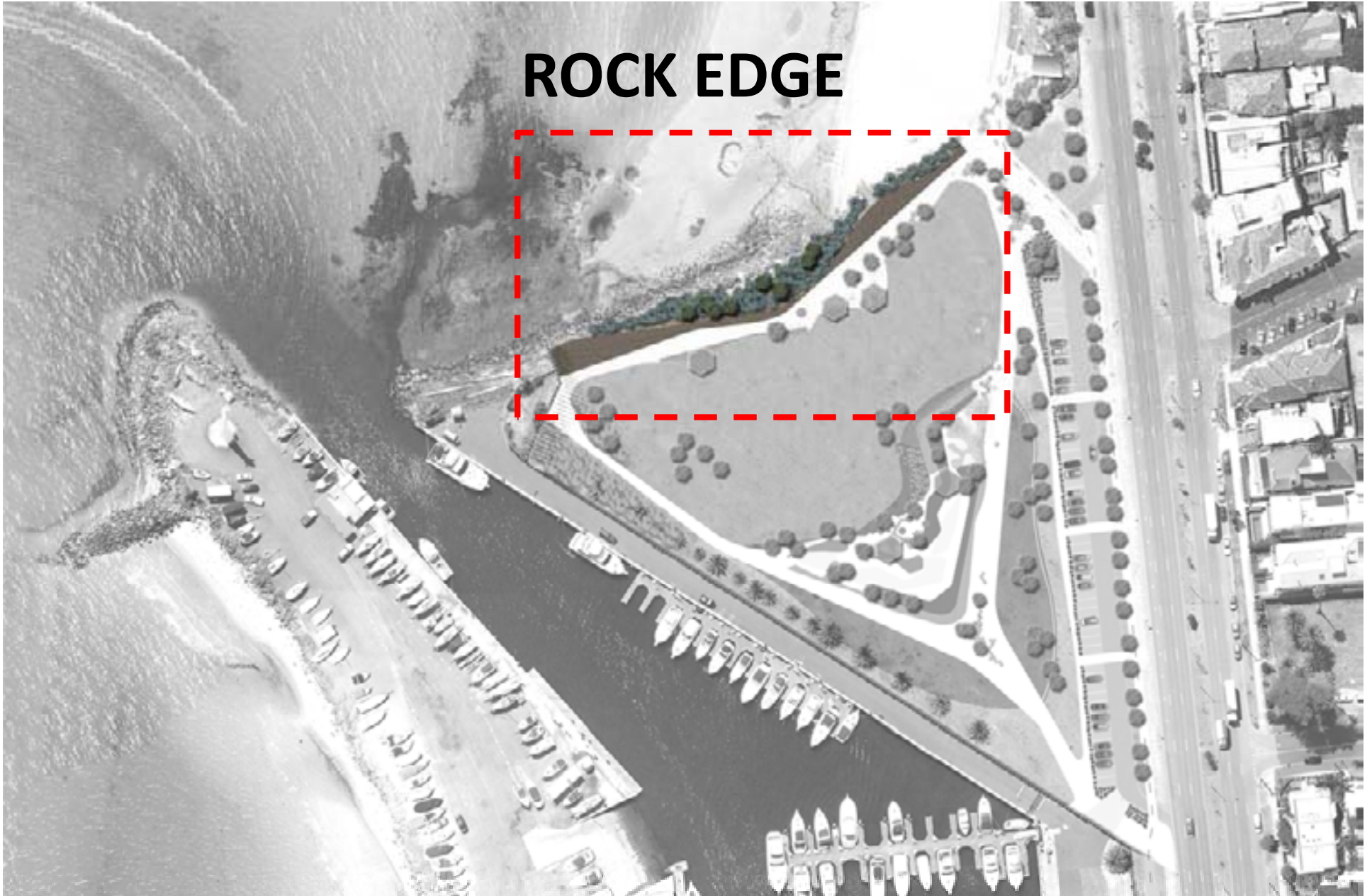
Boardwalk to rock edge

Marina Reserve

...a park for everyone!

EDNIE
DESIGN

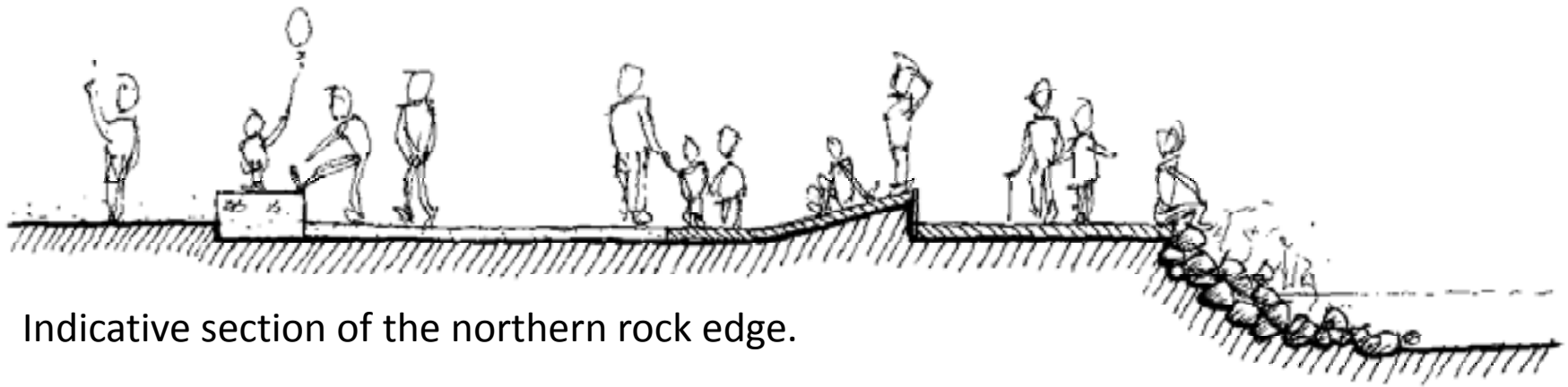
ROCK EDGE



Marina Reserve

...a park for everyone!

ROCK EDGE



Indicative section of the northern rock edge.

Marina Reserve

...a park for everyone!

An aerial photograph of a coastal area. On the left, the ocean meets a rocky shore. A proposed 'rock edge' is highlighted in a dark brown color, extending from the shore towards the right. To the right of the rock edge is a paved area with a viewing deck and seating. Further right is a residential area with houses and a road. The text 'ROCK EDGE' is overlaid in large, bold, black letters at the top center.

ROCK EDGE

MASTER PLAN ACTIONS

Provide a timber/paved edge to rock wall

Enables people to visually connect to waters edge

Provision for viewing & seating along edge

Creates great viewing deck back to St Kilda

Includes planting of coastal vegetation to improve habitat & environmental conditions

Marina Reserve

...a park for everyone!

EDNVIC
DESIGN

MARINA FENCE

ISSUES

Visually intrusive?

Marina security?

Lack of connection between

Marina & reserve

OPPORTUNITIES

Visual link to Marina

Potential backdrop to park

Improve aesthetics of fence

Marina Reserve

...a park for everyone!

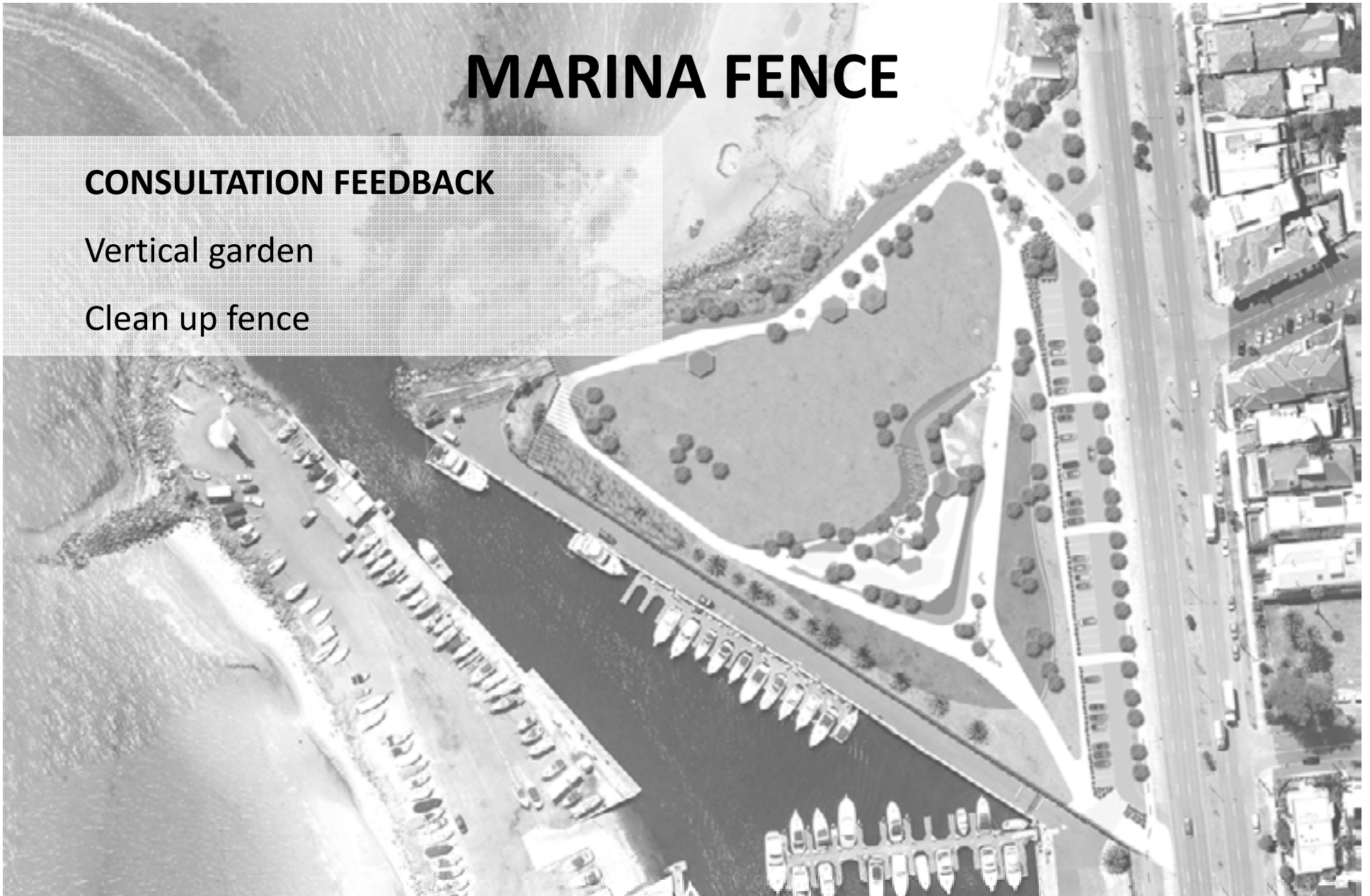
CONVIC
DESIGN

MARINA FENCE

CONSULTATION FEEDBACK

Vertical garden

Clean up fence

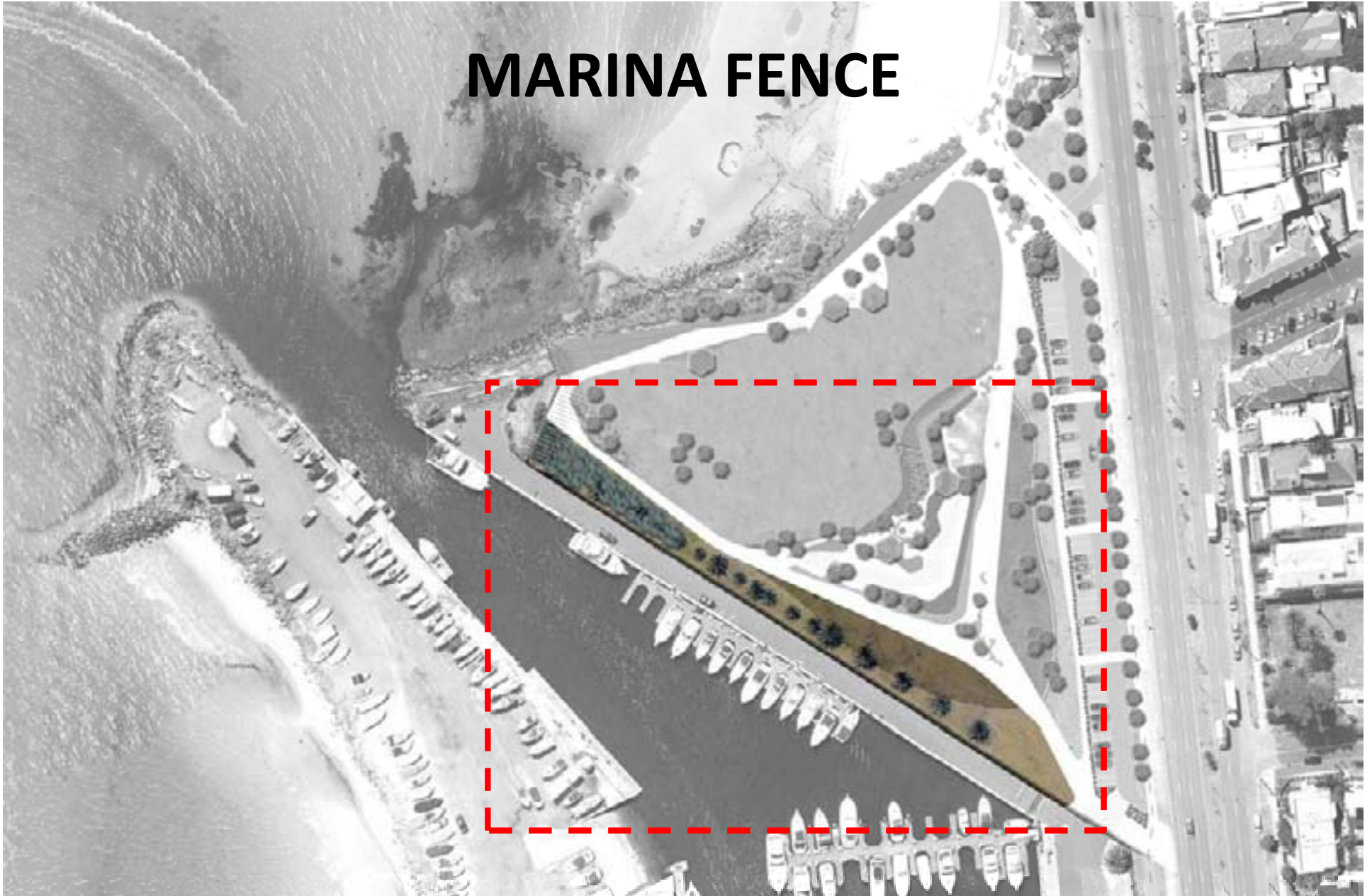


Marina Reserve

...a park for everyone!

EDNIE
DESIGN

MARINA FENCE

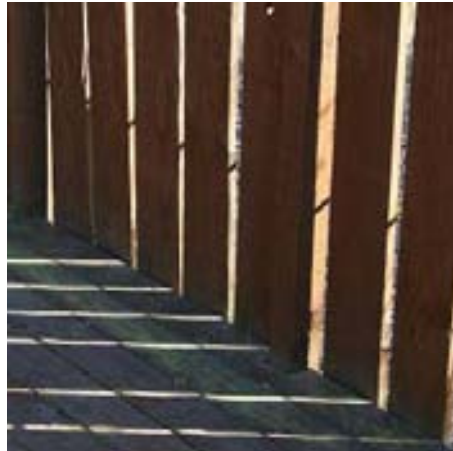


Marina Reserve

...a park for everyone!

EDNIE
DESIGN

MARINA FENCE



Marina Reserve

...a park for everyone!



MARINA FENCE

MASTER PLAN ACTIONS

Installation of a new boundary fence

Maintains visual link to Marina

Provides vertical backdrop to reserve

Improves safety to Marina

Improves aesthetic of this southern boundary

Marina Reserve

...a park for everyone!

EGNVIE
DESIGN

VEGETATION

ISSUES

Coastal environment limits
species selection
Harsh climatic conditions

OPPORTUNITIES

Provide shade
Local & indigenous species
Textural qualities
Improve habitat
Attract & support fauna
Provide educative experience

Marina Reserve

...a park for everyone!

CONVIC
DESIGN

VEGETATION

CONSULTATION FEEDBACK

Trees/flowers/open air spaces

Shade

Improve vegetation

Indigenous plants

Seaside vegetation

Want to see correct vegetation

Support coastal vegetation

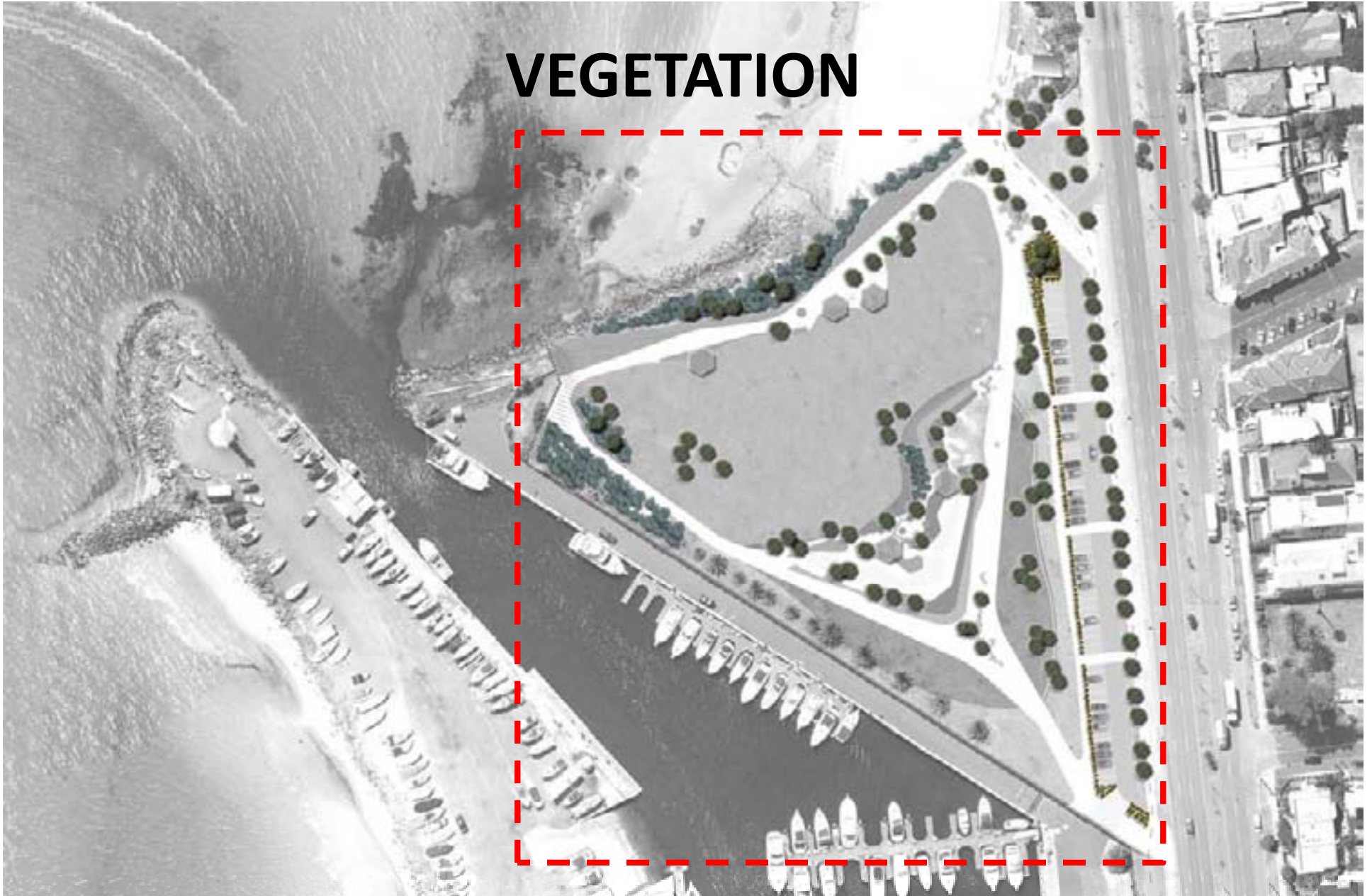
Vertical garden along marina fence

Marina Reserve

...a park for everyone!

EDNIE
DESIGN

VEGETATION



Marina Reserve

...a park for everyone!

EDNIE
DESIGN

VEGETATION



Robust coastal plantings will make up a large portion of the vegetation in Marina Reserve.

Marina Reserve

...a park for everyone!

VEGETATION

MASTER PLAN ACTIONS

50 trees/large shrubs removed/relocated to provide for new park alignment subject to condition

Over 100 new indigenous/native coastal tolerant trees to be planted throughout reserve

Indigenous/native grasslands planted across reserve to improve habitat

Marina Reserve

...a park for everyone!

EDNVIE
DESIGN

SKATEABLE INFRASTRUCTURE

CONSULTATION FEEDBACK

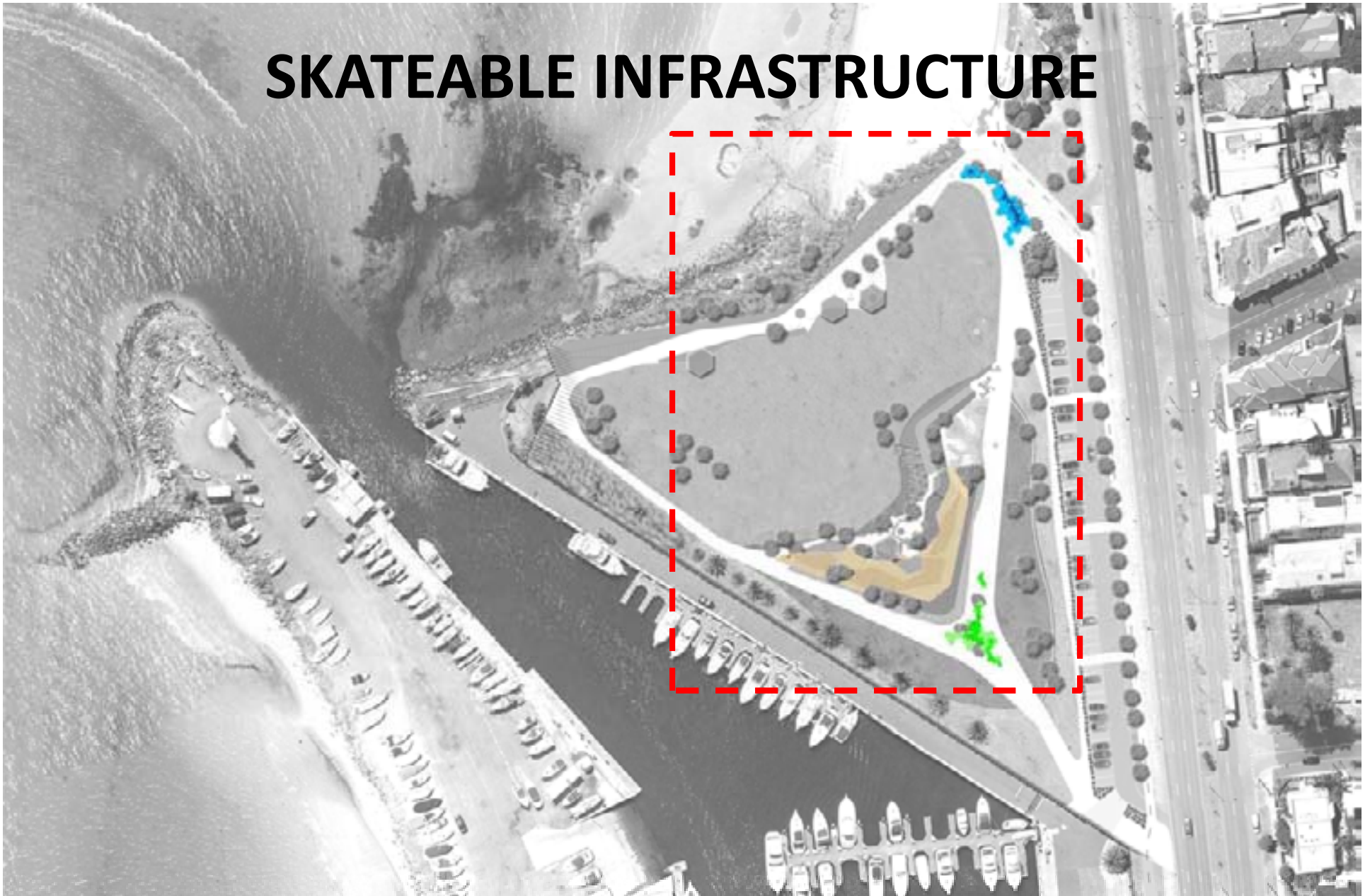
- Locate close to existing activity
- Provide world class facility
- Ensure park is sunken/integrated
- Provide for all levels of use
- Shared use space

Marina Reserve

...a park for everyone!

EDNIE
DESIGN

SKATEABLE INFRASTRUCTURE

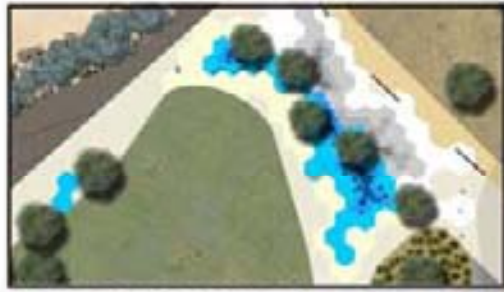


Marina Reserve

...a park for everyone!

EDNIE
DESIGN

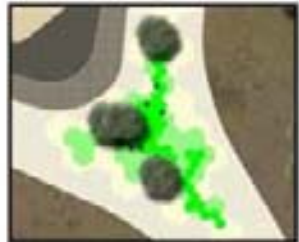
SKATEABLE INFRASTRUCTURE



INCIDENTAL SKATE 01



SKATE INFRASTRUCTURE



INCIDENTAL SKATE 02



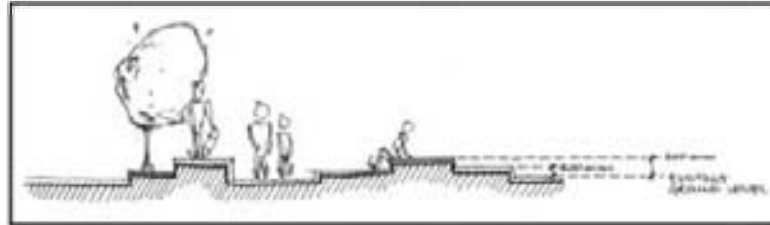
Marina Reserve

...a park for everyone!

SKATEABLE INFRASTRUCTURE



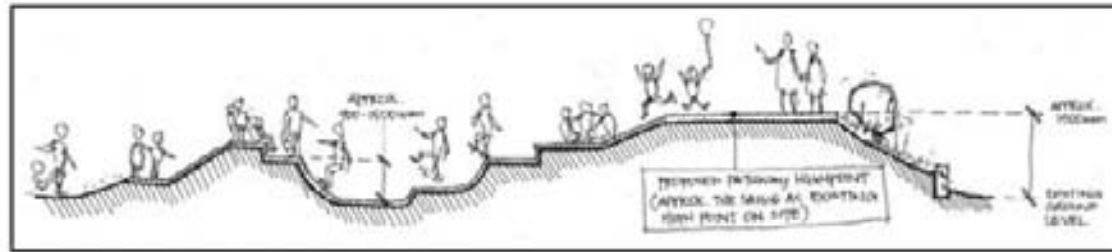
INCIDENTAL SKATE 01



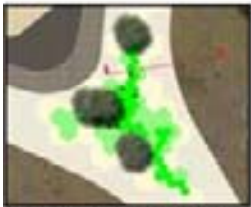
INCIDENTAL SKATE 01 INDICATIVE SECTION



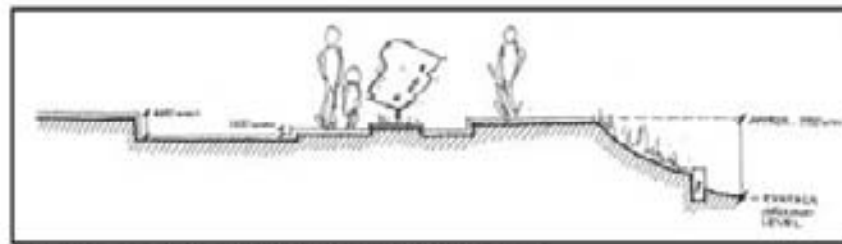
SKATE INFRASTRUCTURE



SKATE INFRASTRUCTURE INDICATIVE SECTION



INCIDENTAL SKATE 02

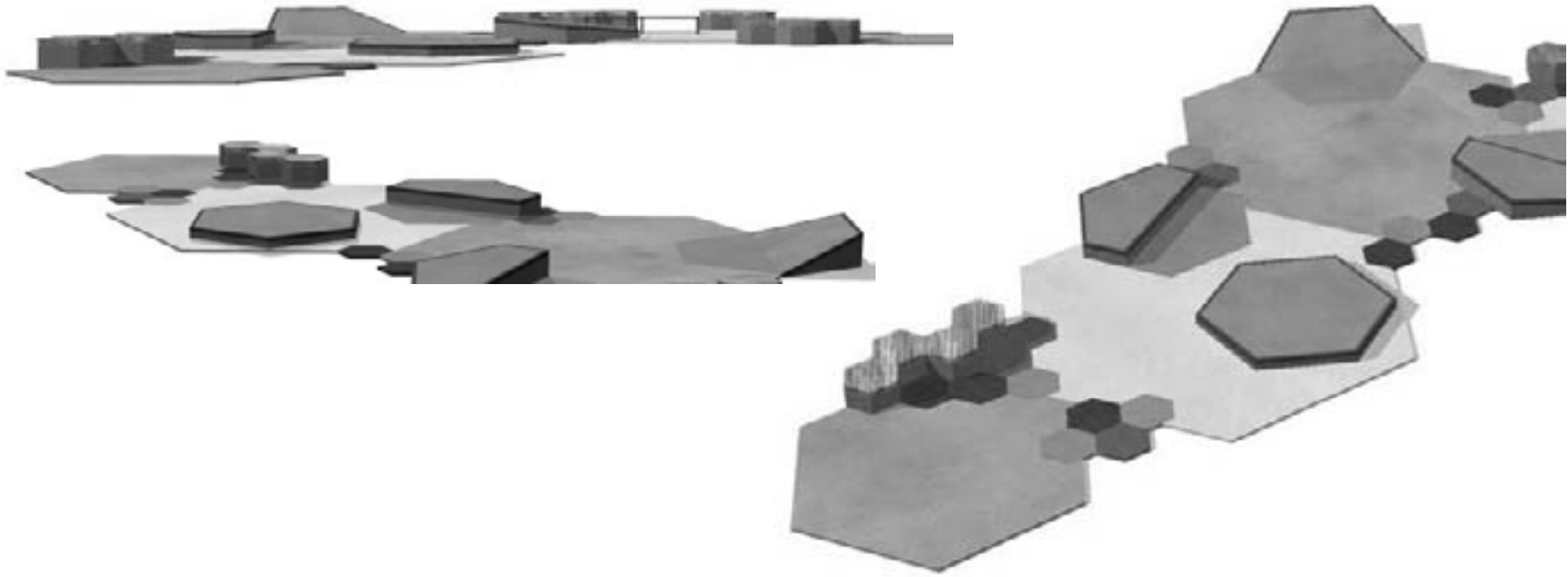


INCIDENTAL SKATE 02 INDICATIVE SECTION

Marina Reserve

...a park for everyone!

INCIDENTAL SKATE INFRASTRUCTURE



The above images are conceptual only, displaying how multi use incidental skateable infrastructure may operate throughout the site.

Marina Reserve

...a park for everyone!

SKATEABLE INFRASTRUCTURE

MASTER PLAN ACTIONS

Provision of approx 500 sq/m defined active zone
sunken into embankment with views to the northern
lawn area

Clearly designated area but still reflects foreshore
promenade form

Sculptural, contained space that caters for a range of
users and levels of expertise

Provision of sunken defined skateable infrastructure in
key areas along the promenade edge

Marina Reserve

...a park for everyone!

EDNIE
DESIGN

PLAY OPPORTUNITY



Marina Reserve

...a park for everyone!

EDNIE
DESIGN

PLAY OPPORTUNITY



Topographical play spaces allow children to invent games and explore the terrain, prompting creativity and imagination.

Marina Reserve

...a park for everyone!

PLAY OPPORTUNITY

MASTER PLAN ACTIONS

Provision of approx 200 sq/m defined play zone
sunken into embankment with views to the northern
lawn area

Clearly designated area but still reflects foreshore
promenade form

Sculptural, contained space that caters for a range of
play experiences

Incorporates existing planet sculptures

Marina Reserve

...a park for everyone!

EDNVIE
DESIGN

WEATHER STATION

ISSUES

Requires fence?

Isolated

Limits access to point

OPPORTUNITIES

Educative/informative

Local

Improved access

Marina Reserve

...a park for everyone!

CONVIC
DESIGN

WEATHER STATION

MASTER PLAN ACTIONS

Provide access and viewing
to weather station

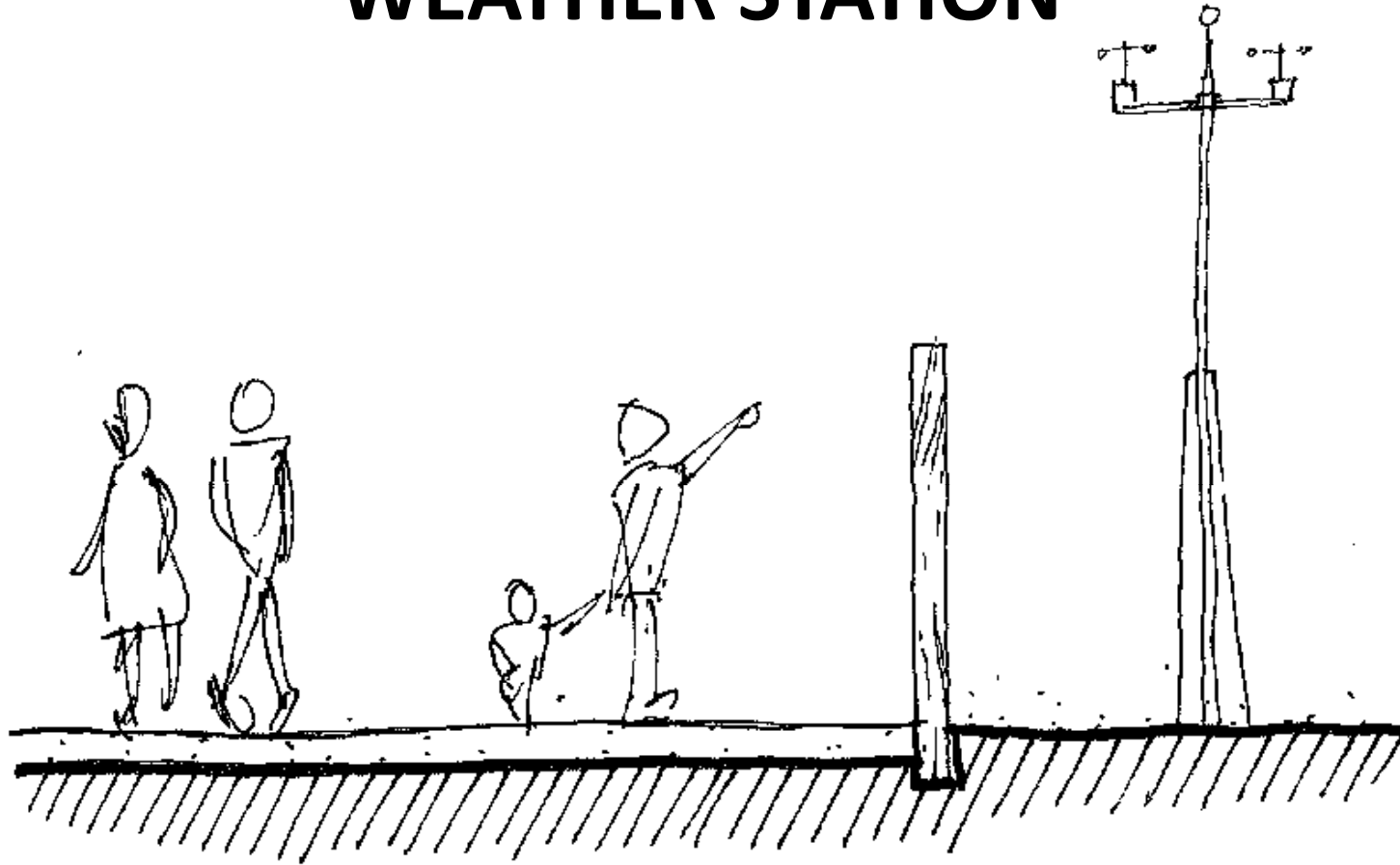
Provide educative element

Marina Reserve

...a park for everyone!

EDNIE
DESIGN

WEATHER STATION



Indicative section of the weather station, allowing users of the reserve to get closer to the instrument and engage with the information it collects.

Marina Reserve

...a park for everyone!

SOLAR SYSTEM ART WORK

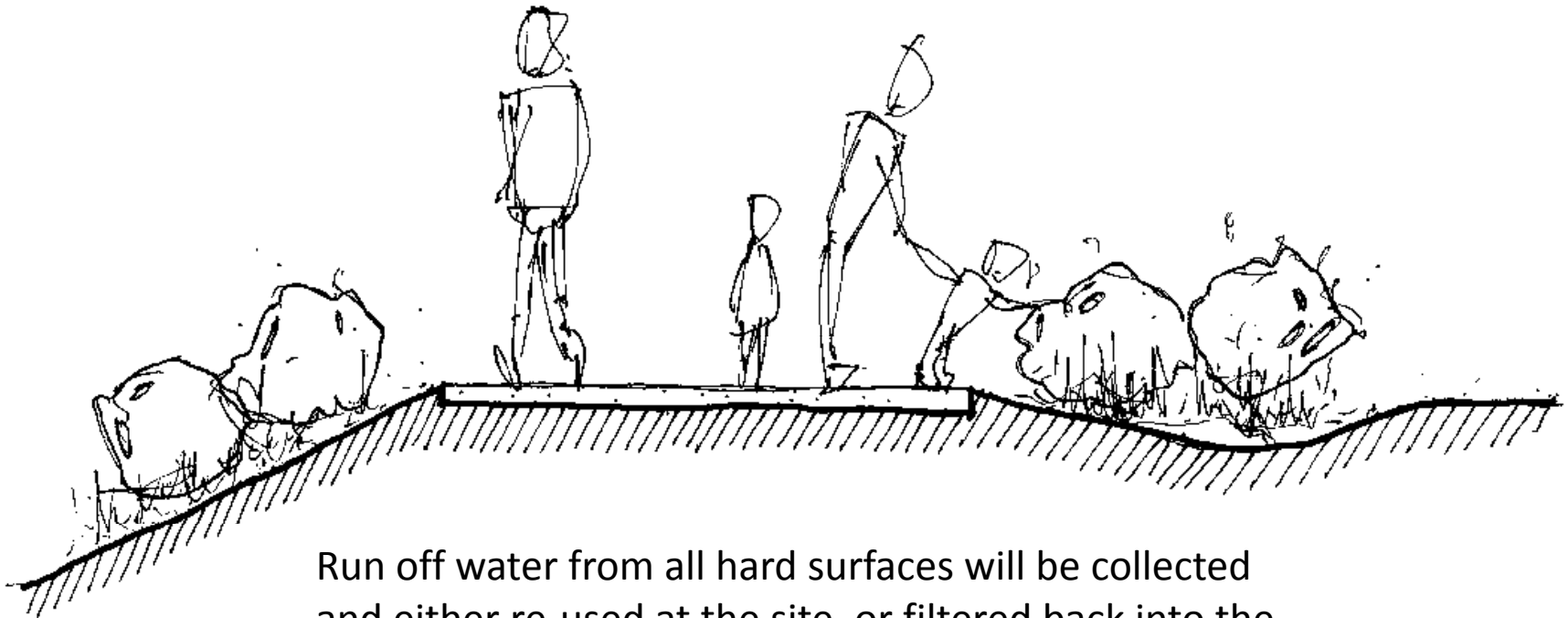


The solar system art work remains a central point of Marina Reserve, and will maintain its integrity as a scale model.

Marina Reserve

...a park for everyone!

WATER SENSITIVE URBAN DESIGN

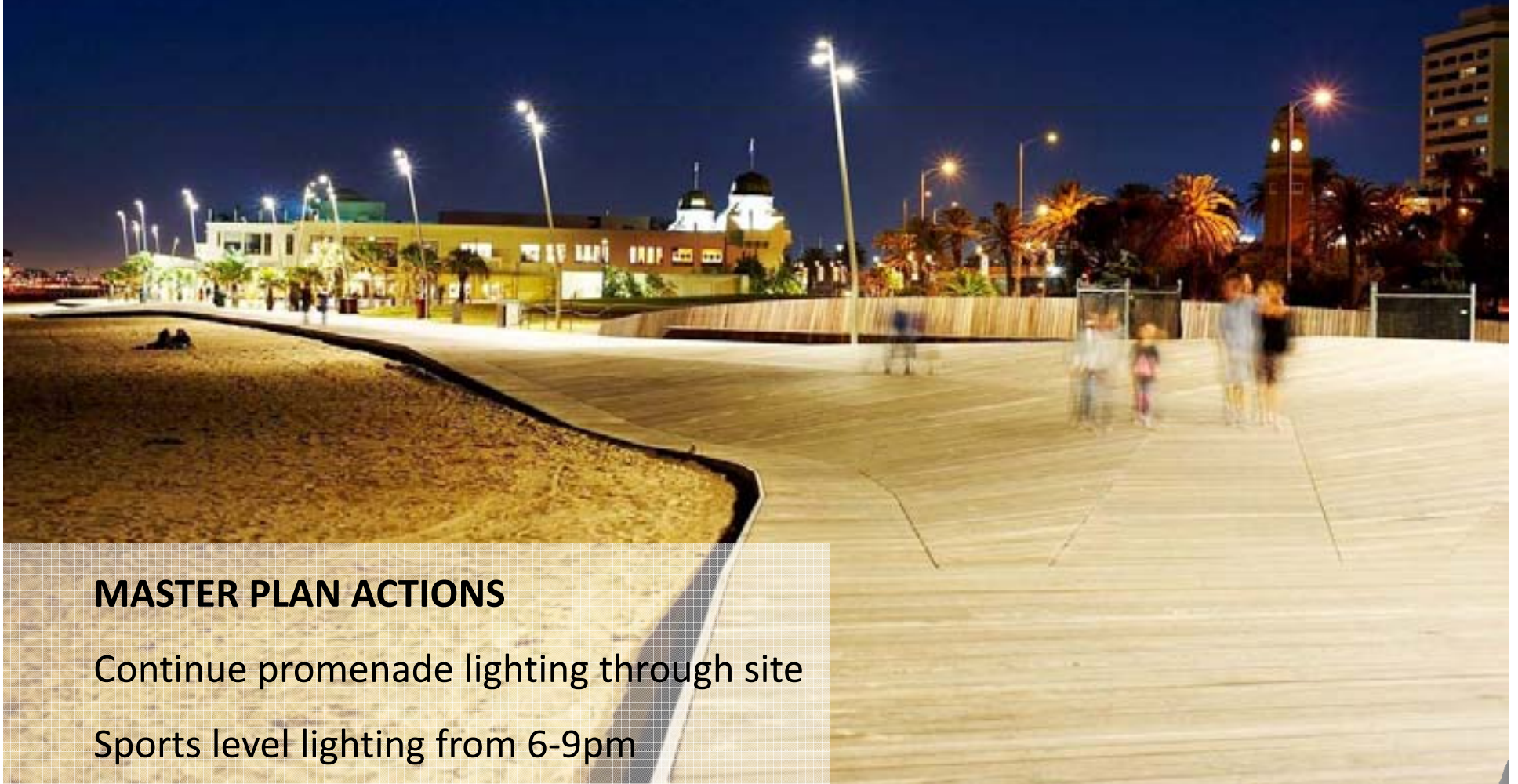


Run off water from all hard surfaces will be collected and either re-used at the site, or filtered back into the bay.

Marina Reserve

...a park for everyone!

LIGHTING



MASTER PLAN ACTIONS

Continue promenade lighting through site

Sports level lighting from 6-9pm

Marina Reserve

...a park for everyone!

EDNIE
DESIGN

SIGNAGE



Examples of signage as a landscape feature, rather than a standalone object.

Marina Reserve

...a park for everyone!

AMENITY

ISSUES

Limited seating

Limited BBQ's

Limited all abilities access

No toilets

No drinking fountain

No shade / shelter

No bike racks

OPPORTUNITIES

Provide shade / shelter

Provide toilets?

Improve seating

Improve access

Improve bins

Provide drinking fountain

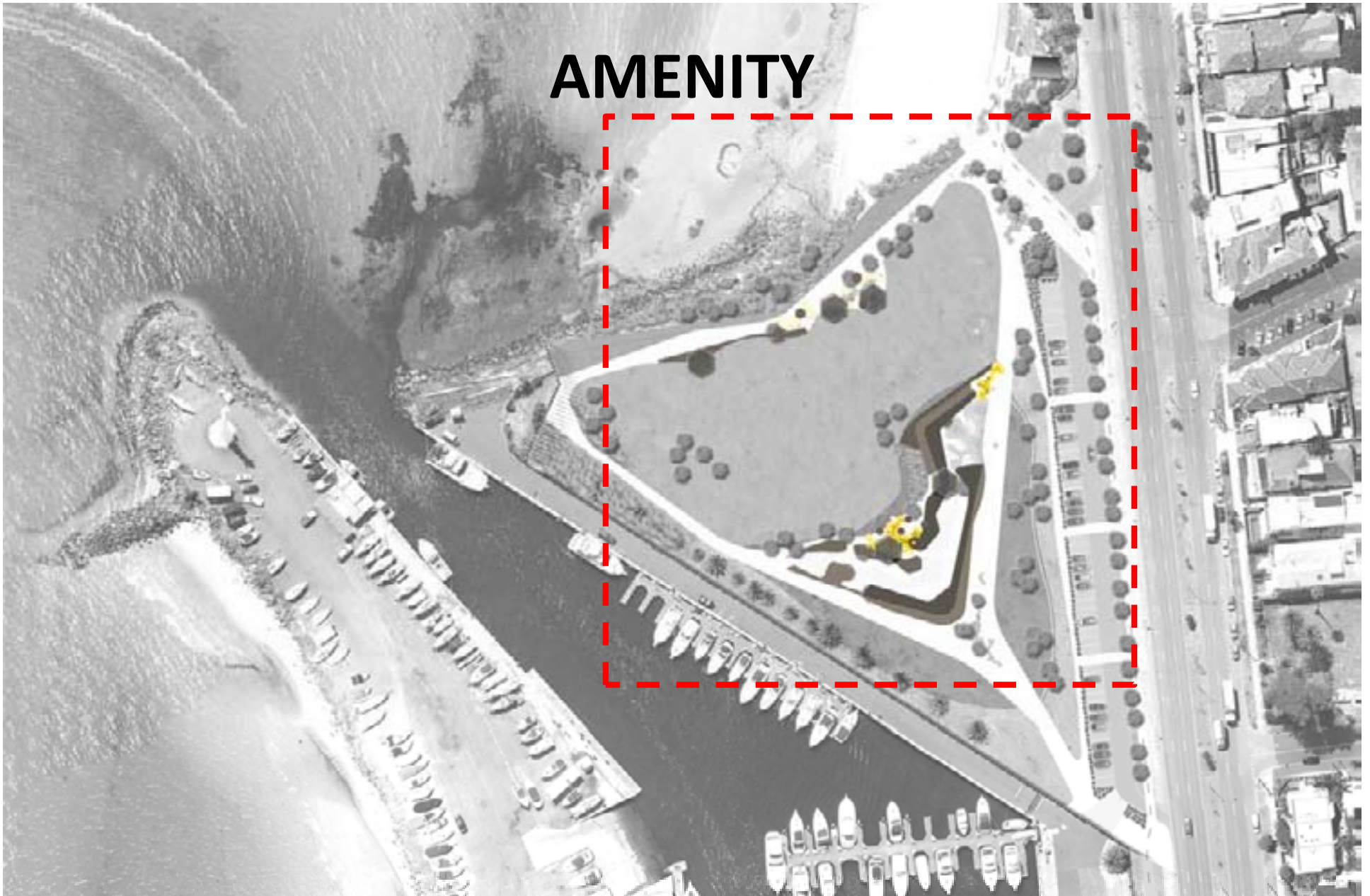
Provide bike racks

Marina Reserve

...a park for everyone!

CONVIC
DESIGN

AMENITY



Marina Reserve

...a park for everyone!



AMENITY

MASTER PLAN ACTIONS

Provision of simple steel shade / shelters in key locations

Provision of secure toilets at northern edge of reserve

Provision of seating/bins/drinking fountains including
seat walls and edges throughout reserve in line with
promenade treatment

Provision of BBQ area along northern boardwalk edge

Marina Reserve

...a park for everyone!

EGNVIE
DESIGN