



Marina Reserve Masterplan Community meeting four

Final detailed design plans for the picnic and play
space

Christa Mitchell, City of Port Phillip

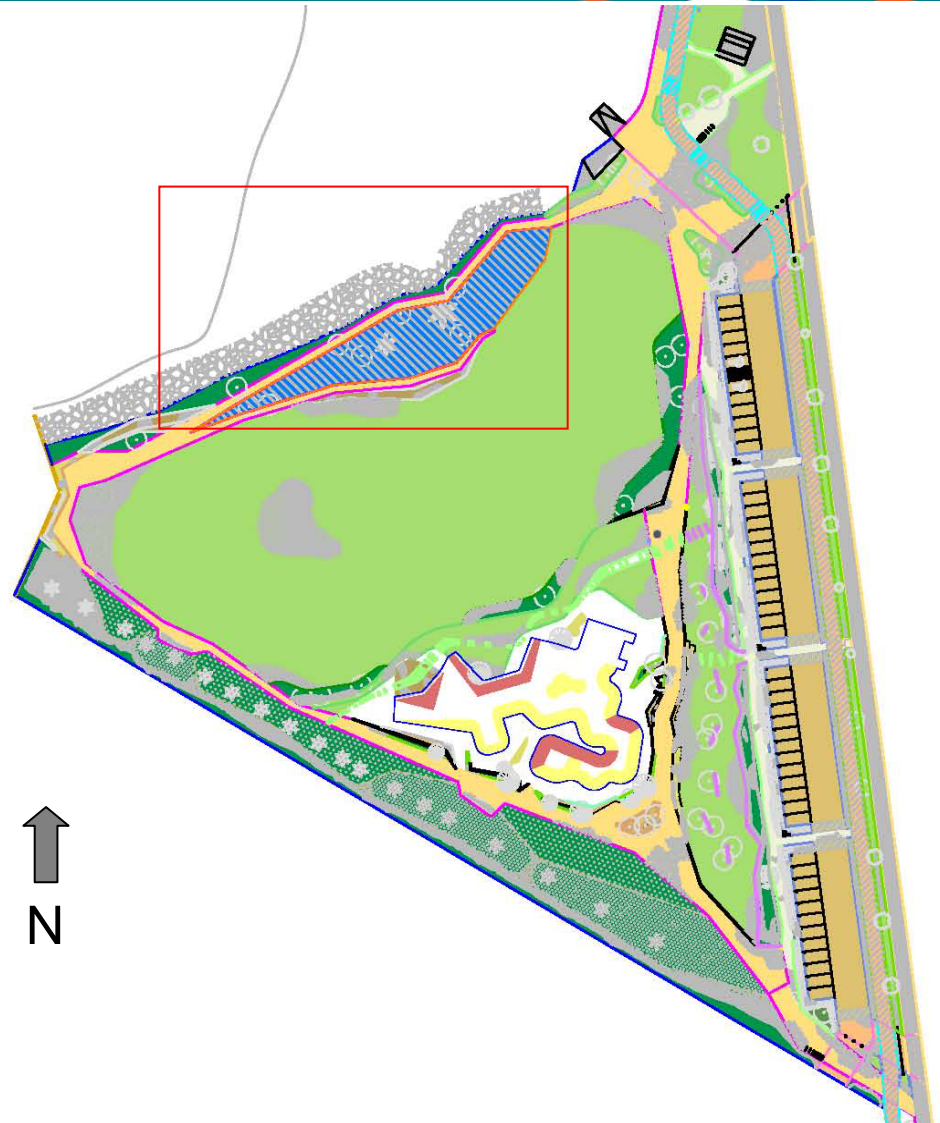


Marina Reserve Masterplan

Community meeting four

Context Plan

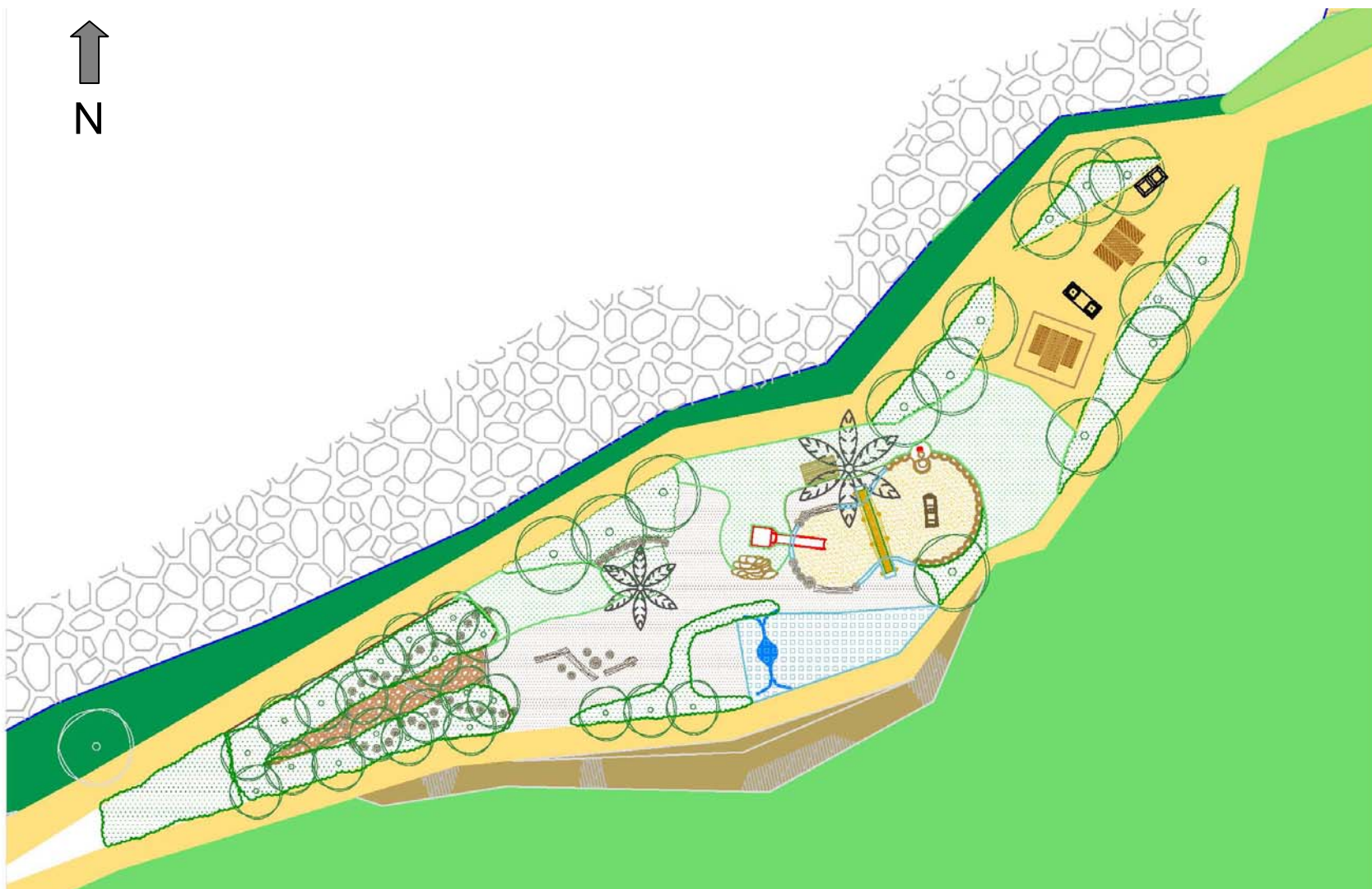
Location of Picnic & Playspace
within Marina Reserve





Marina Reserve Masterplan

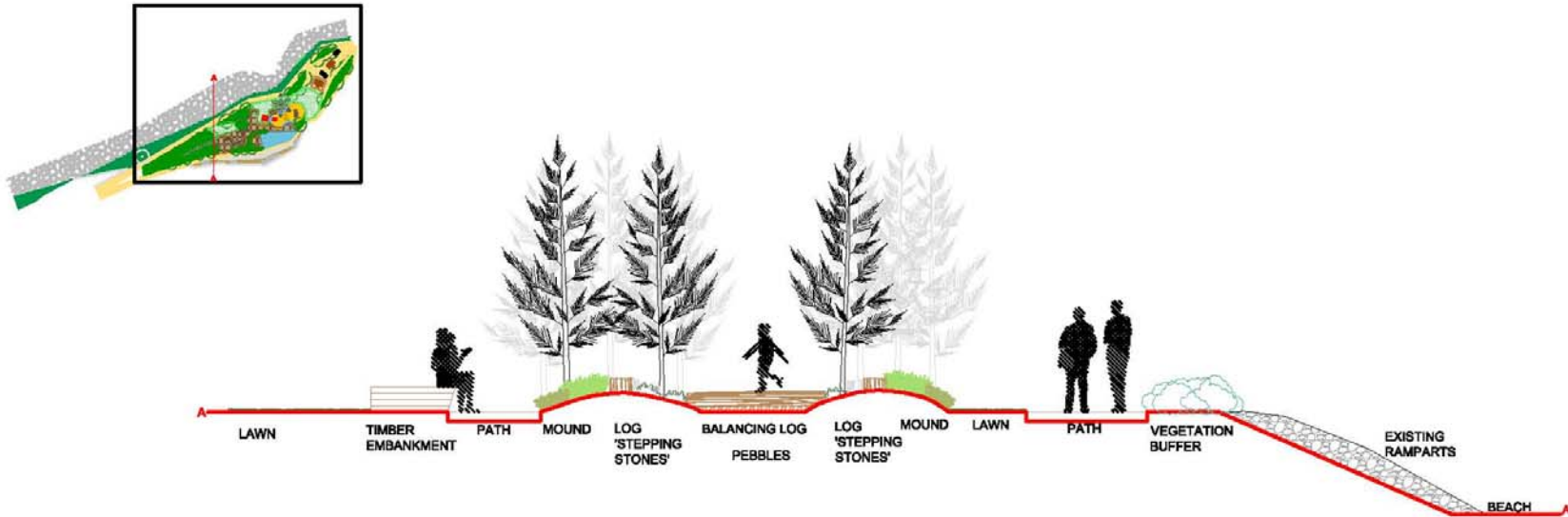
Picnic & Playspace proposed Plan





Marina Reserve Masterplan

Picnic & Playspace

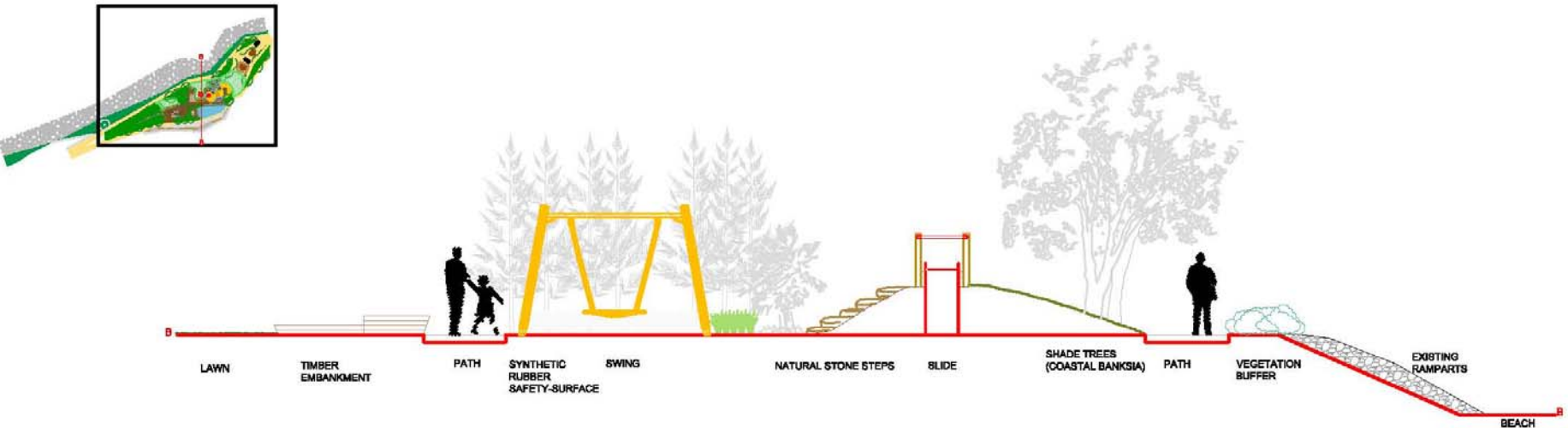


- Picnic & Playspace Section through She-Oak forest with log stepping-stones.



Marina Reserve Masterplan

Picnic & Playspace



- Picnic & Playspace Section through centre of playspace with swing, mound and slide and boulder steps.



Marina Reserve Masterplan

Proposed Play Equipment



- **Birds Nest Swing** with timber and steel frame
- Age Group: 1 year +



- **Mound/Embankment Slide** with timber platform
- Age Group: 2 years +

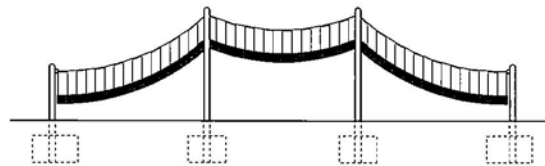


Marina Reserve Masterplan

Proposed Play Equipment



sample layout



- **Coconut Rope Bridge** with timber posts, 3 metres long.
- Age 5 years +



- **Carved Log Timber Boat** to be located in sandpit.
- Age Group: 1 year +



- **Fountain** push button tap for sand & water play
- Age Group: 2 years +



Marina Reserve Masterplan

Natural Play Elements



- **Sandpit** sand & water for creative, cognitive play.



- **Stepping Stones** created from recycled cypress logs, set at various heights for balancing/motor skills



- **Boulders & Rocks** for climbing & sitting



- **Native Plants** in a range of textures & colours for imaginative play.



Marina Reserve Masterplan Furniture & Shade Trees



Picnic table with two bench seats



Double hotplate BBQ



Timber-slat pergola (no roof sheeting)



Allocasuarina verticillata

SHADE TREES



Banksia integrifolia