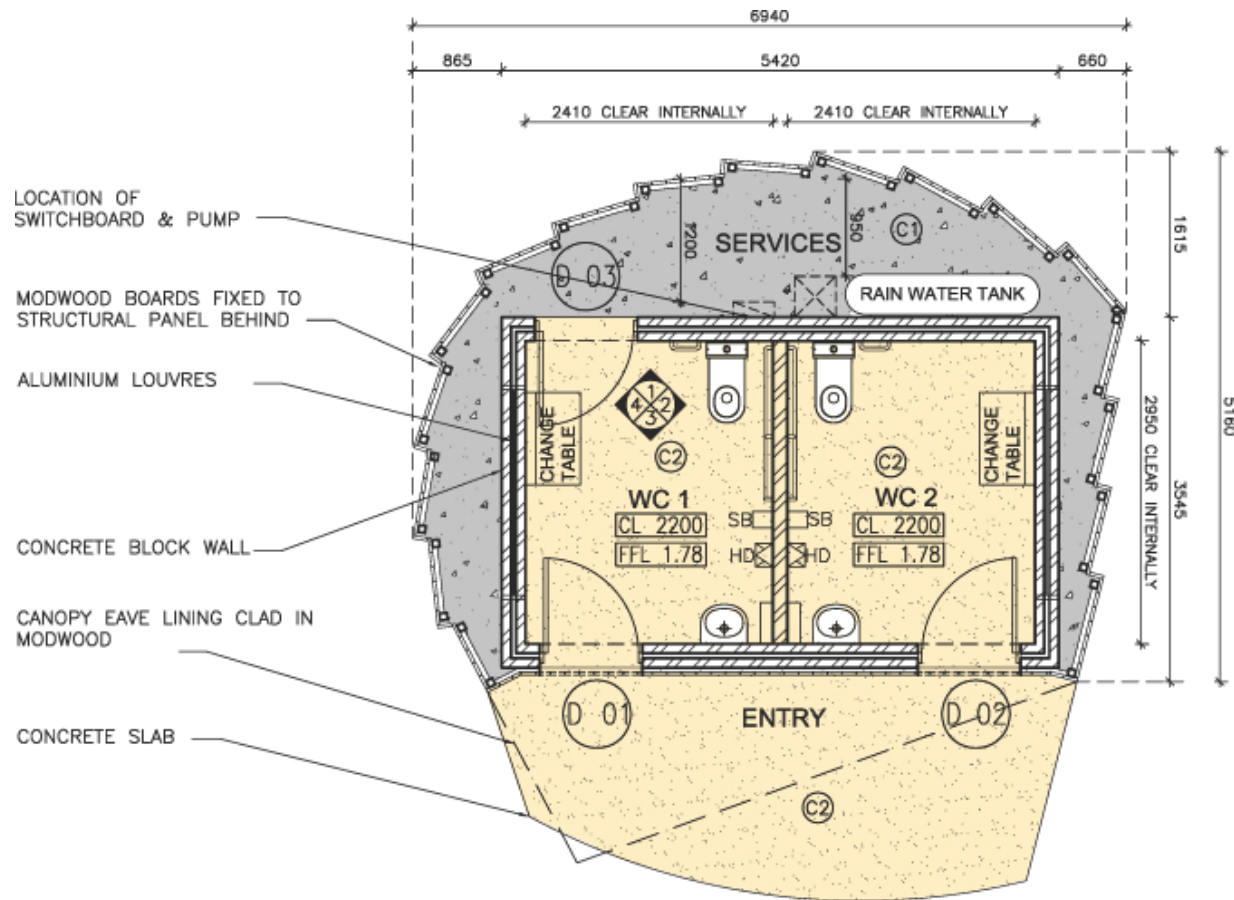




Marina Reserve Masterplan

Community meeting four

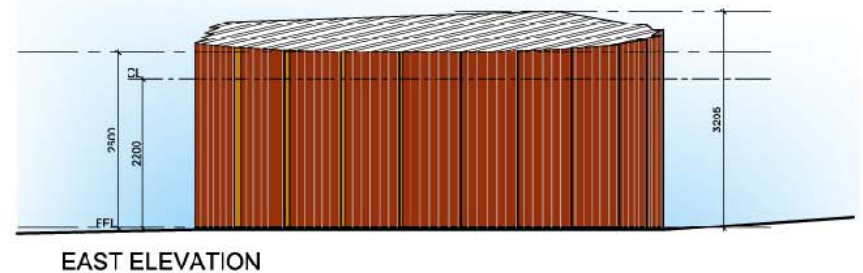
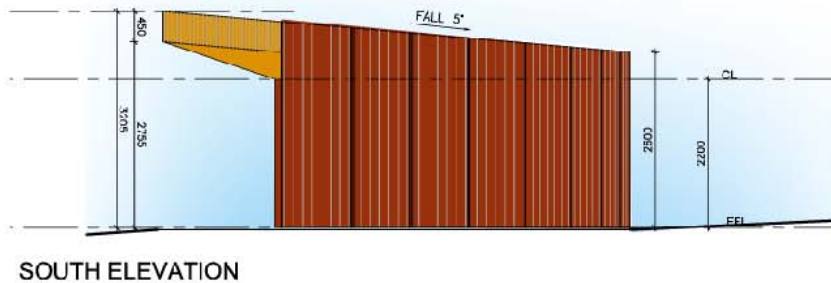
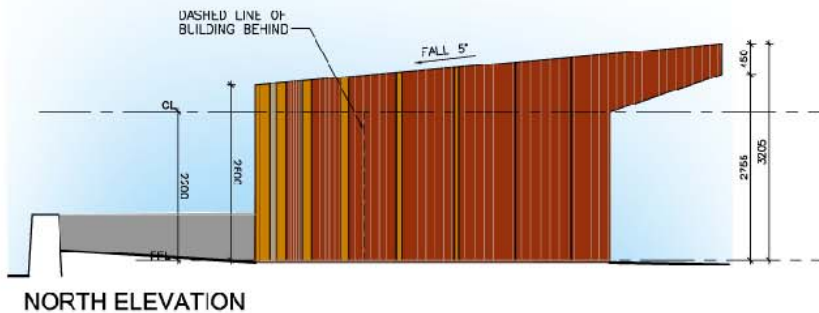


FLOOR PLAN



Marina Reserve Masterplan

Community meeting four





Marina Reserve Masterplan

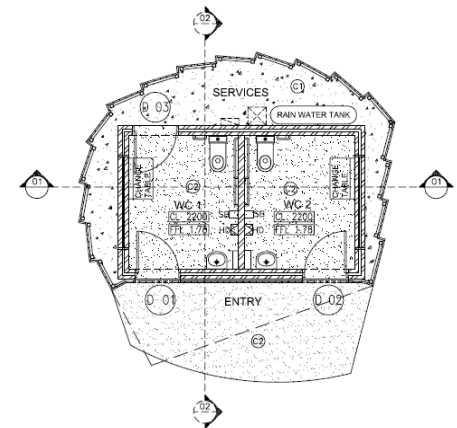
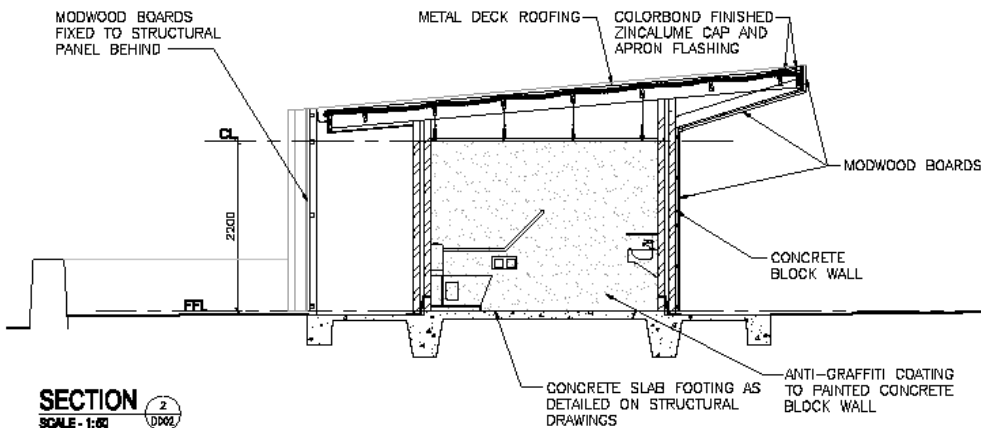
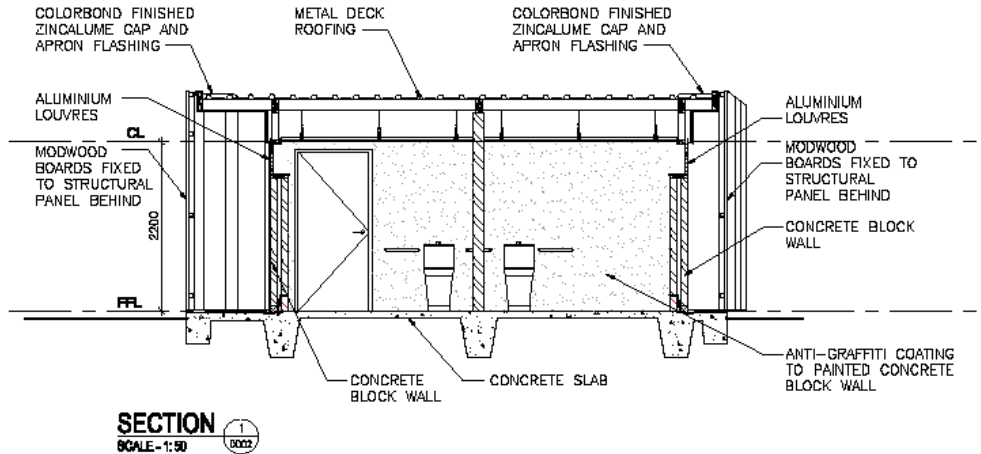
Community meeting four





Marina Reserve Masterplan

Community meeting four

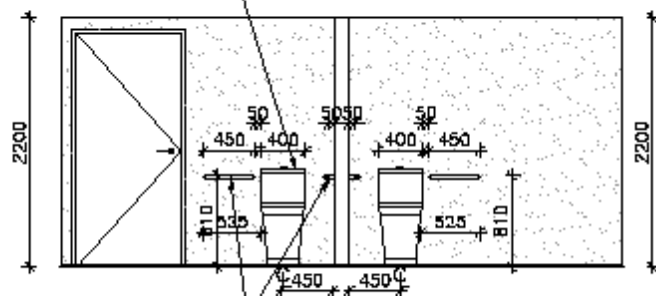




Marina Reserve Masterplan

Community meeting four

STAINLESS STEEL
DISABLED TOILET
SUITE AS SCHEDULED



VIEW

SCALE - 1:50

1
0002

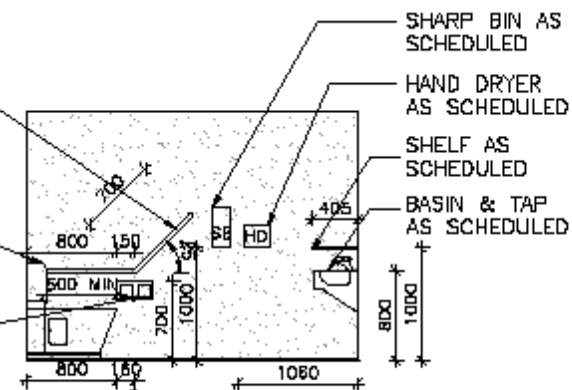
38mm \varnothing STAINLESS
STEEL GRAB RAIL AS
SCHEDULED INSTALLED
TO AS 1428.1

32mm \varnothing STAINLESS
STEEL GRAB RAIL AS
SCHEDULED INSTALLED
TO AS 1428.1

DISABLED TOILET
SUITE AS
SCHEDULED

TOILET ROLL
HOLDER AS
SCHEDULED

810 TOP OF HANDRAIL
450 TOP OF PAN



VIEW

SCALE - 1:50

2
0002

SHARP BIN AS
SCHEDULED

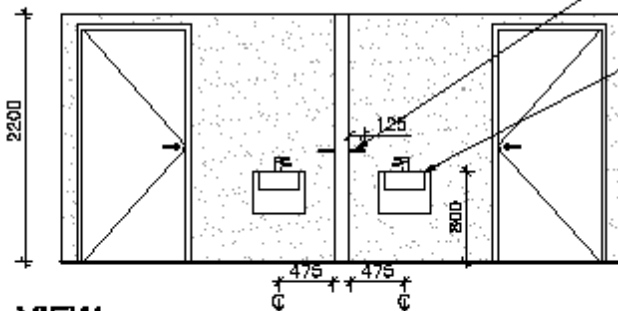
HAND DRYER
AS SCHEDULED

SHELF AS
SCHEDULED

BASIN & TAP
AS SCHEDULED

SHELF AS
SCHEDULED

BASIN & TAP
AS SCHEDULED



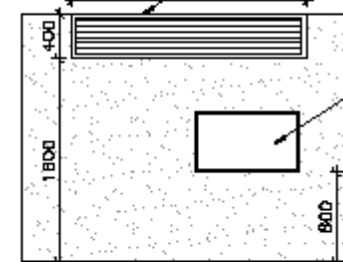
VIEW

SCALE - 1:50

3
0002

POWDERCOAT FINISH TO
LOUVER AT HIGH LEVEL AS
SCHEDULED

CHANGE TABLE AS
SCHEDULED



VIEW

SCALE - 1:50

4
0002



Marina Reserve Masterplan

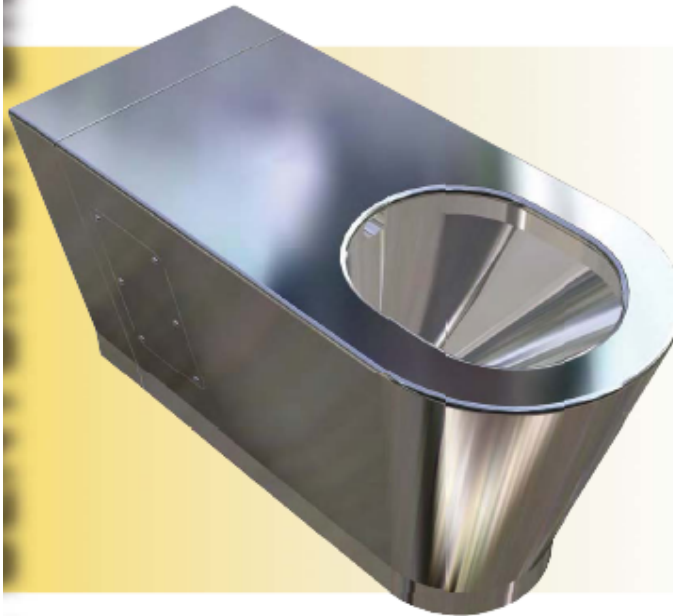
Community meeting four

FEATURES;

- Available in 'S' or 'P' Trap models.
- Vandal proof design.
- Radiused edges.
- No ligature points.
- Contraband-proof trap.
- Concealed fixings.
- 6/3 ltr flushing (low flush).



AS-1428.2-1992
COMPLIANT





Marina Reserve Masterplan

Community meeting four





Marina Reserve Masterplan

Community meeting four

