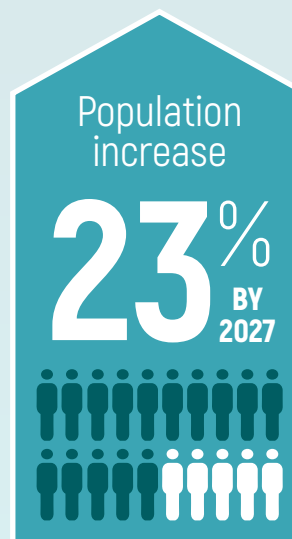




# Our waste challenge

## Our growing City

There will be 25,000 more people living in Port Phillip by 2027. More people means more waste. If we continue with a business as usual approach, there will be more bins in our street and more trucks on our roads. This impacts our local areas and the things we value most.



Waste to landfill  
**+5,000 tonnes**



Weekly collection  
**+18,000 bins**



## The strategy to achieve our targets

In alignment with the Council Plan outcome 3.5 - '**A sustained reduction in waste**', this Waste and Resource Recovery Strategy will outline our priorities to achieve these targets.

### NEXT STEPS

Our draft Waste and Resource Recovery Strategy, initially consisting of a three year action plan, will be released for community feedback in June 2018.

### Are you interested in being involved?

If so, please speak to a Council officer and enter your details online.

# Our waste challenge



## What needs to change

### Waste diverted from landfill

CURRENT



City of Port Phillip



Inner metro Councils



Leading inner metro Council

2027 TARGET



City of Port Phillip

### Contents of waste bins

CURRENT



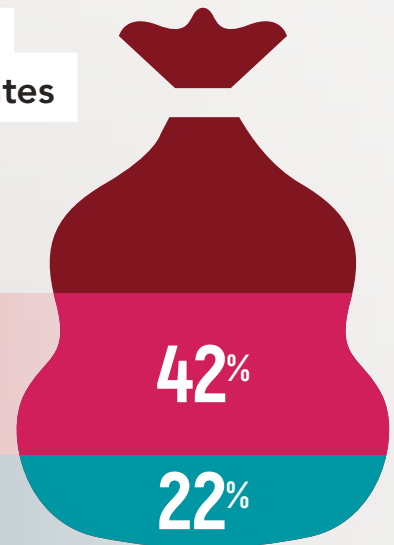
2027 TARGET



### Apartment recycling rates

Waste which could be recycled

Currently recycled



### What you've told us

City of Port Phillip should be a leading Council in waste innovation.

Council needs to make it easier for people living in apartments to live sustainably.

We are willing to invest more towards additional waste services.