



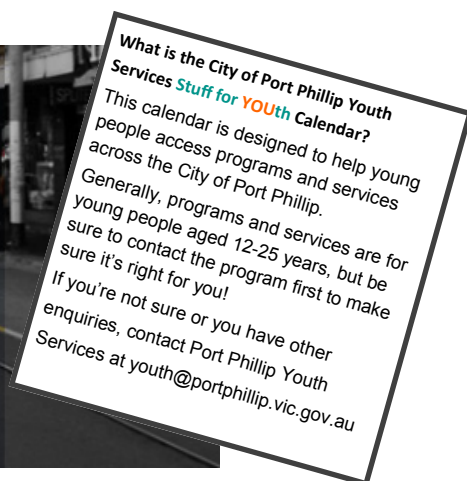
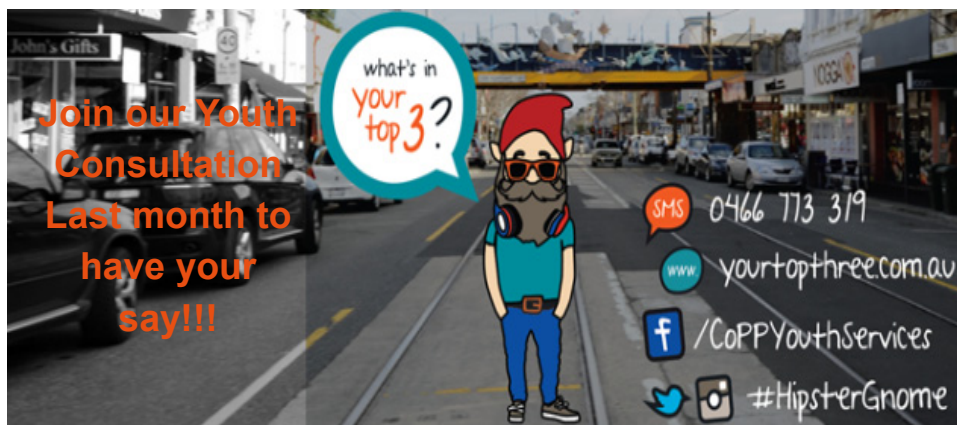
Stuff for YOUTH

November 2013

Mon	Tues	Wed	Thu	Fri	Sat	Sun
Programs listed are generally for 12-25year olds who live, work, study or play within the City of Port Phillip. For further information including details about these programs or who to contact, please see the next page. Unless otherwise indicated, all programs are provided at no charge to the participant, and in some cases a booking/ registration may be required to save your place in the program.				1 MAC Girls Club Amateur Boxing The Lounge Kick Starts	2	3
4 Homies MAC Amateur Boxing	5 MELBOURNE CUP DAY PUBLIC HOLIDAY 	6 Drop In Impact Amateur Boxing	7 Homies Hype Kick Starts B3 Leadership Crew OUTLoud Quest	8 MAC Girls Club Amateur Boxing The Lounge Kick Starts	9	10
11 Homies MAC Amateur Boxing	12 Girl Zone MAC Girls Club	13 Drop In Impact Amateur Boxing	14 Homies Hype Kick Starts B3 Leadership Crew OUTLoud Quest	15 MAC Girls Club Amateur Boxing The Lounge Kick Starts	16	17
18 Homies MAC Amateur Boxing	19 Girl Zone MAC Girls Club	20 Drop In Impact Amateur Boxing	21 Homies Hype Kick Starts B3 Leadership Crew OUTLoud Quest	22 MAC Girls Club Amateur Boxing The Lounge Kick Starts	23	24
25 Homies MAC Amateur Boxing	26 Girl Zone MAC Girls Club	27 Drop In Impact Amateur Boxing	28 Homies Hype Kick Starts B3 Leadership Crew OUTLoud Quest	29 MAC Girls Club Amateur Boxing The Lounge Kick Starts	30	

All programs and services listed are supported by the City of Port Phillip Youth Services and provided by the following organisations:





Program Info from the calendar

Amateur Boxing @ PCYC St Kilda

Monday, Wednesday, and Friday 5:00pm -6.00pm

B3 Youth Leadership Crew @ Sol Green Community Centre (provided by SPUC & the City of Port Phillip Youth Services)

Thursday 4:00pm – 6:00pm | Youth Leadership group | for young people 12-18 years

DROP IN- Youth Recreation and Chill Space @ St Luke's

Wednesday nights 5:30-8:30 | Pool | Table tennis | Foosball | Wii & PS3 | Laptops & internet access

Girls Club @ PCYC St Kilda

Tuesday nights 6:00-8.00 | Friday nights 5:15pm-7:15pm | Girls only

GIRL ZONE @ Sol Green Community Centre (provided by SPUC)

Tuesdays 4:00pm-5:30pm | Recreation & Leadership program for Grades 5 & 6 Girls only | \$3 a session

HOMIES Homework Help Club @ Emerald Hill Library (provided by St Luke's)

Monday and Thursday nights 6:00-7:30 | One-on-one tutoring | group activities | transport to/from

HYPE @ Sol Green Community Centre (provided by SPUC)

Thursdays 4:00pm -5.30pm | Recreation and Leadership program Grades 5 & 6 Boys only | \$3 a session

IMPACT @ Sol Green Community Centre (provided by SPUC)

Wednesdays 4:00pm -5.30pm | Recreation program for Boys and Girls in grade 5 & 6 | \$3 a session

KICK STARTS @ PCYC St Kilda

Thursday & Friday nights 4:00pm -5:00pm | Personal training | ***Bookings Essential**

QUEST @ St Luke's \$5 pizza fee

Thursday nights 7:00 -9:00 | events & camps | hang out | discuss spirituality

MAC—Mobile Activity Centre (provided by PCYC)

Mondays 5:00-7:00pm Pick Up @ Port Melbourne Housing Estate
Drop Off @ Port Melbourne Housing Estate
Tuesdays 5:30-8:30pm Pick Up @ South Melbourne Housing Estate
Drop Off @ PCYC St Kilda
Fridays 5:00-7:00pm Pick Up @ South Melbourne Housing Estate
Drop Off @ South Melbourne Housing Estate
Pick Up & Drop Off locations / addresses on the right of this page

SKYS OUTloud @ SKYS

Thursday night 4.30-6.30 | meet with other same sex attracted and/or sex/ gender diverse young people | hang out & share experiences | resources and access to support | Contact SKYS for more info

THE LOUNGE @ Sol Green Community Centre (provided by SPUC)

Friday Nights 6.00 - 8.00pm | Drop In for Year 7 - 12 Students | pool | internet | food & drink

Locations & Contacts Info

City of Port Phillip Youth Services

Phone: (03) 9209 6777

Email: youth@portphillip.vic.gov.au

f CoPPYouthServices

www.portphillip.vic.gov.au/youth-services.htm

SKYS

Phone: (03) 9534 3685

SKYS have opportunities for support and alternative education programs too—give them a call or visit their website
www.skys.org.au

SPUC @ Sol Green Community Centre

Cnr of Coventry and Montague Street
South Melbourne

Phone: (03) 9645 7587

St Luke's

210 Dorcas St, South Melbourne

Phone: (03) 9686 8521

St Luke's @ Emerald Hill Library

195 Bank St, South Melbourne

Phone: (03) 9686 8521

PCYC St Kilda

179 Inkerman Street, St Kilda

Phone: (03) 9534 7584

PCYC MAC

Port Melbourne Housing Estate
Cnr Graham St & Station St, Port Melbourne
South Melbourne Housing Estate
322 Park Street South Melbourne
Phone: (03) 9534 7584

Inner South Community Health Service

Youth Outreach Worker, and health services for young people 12 - 25 years.

341 Coventry St, South Melbourne 3205

Phone: (03) 9690 9144

www.ischs.org.au

