



Dog Off-Leash Guidelines Background Report

Version 2, 21 July 2023





City of Port Phillip

99a Carlisle Street
St Kilda VIC 3182

Phone: **ASSIST** 03 9209 6777

Email: portphillip.vic.gov.au/contact-us

Website: portphillip.vic.gov.au

Diversity

Receive the latest news from your City and Council portphillip.vic.gov.au/divercity



National Relay Service

If you are deaf or have a hearing or speech impairment, you can phone us through the National Relay Service (NRS):

TTY users, dial 133677, ask for 03 9209 6777

Voice Relay users, phone 1300 555 727,

then ask for 03 9209 6777.

relayservice.gov.au



Please consider
the environment
before printing.

Contents

1. Introduction	5
1.1 Early Findings.....	6
2. Background Information	7
2.1 Definitions	8
2.2 Sharing our open space and beaches with dogs	8
2.3 City of Port Phillip's population growth.....	9
2.4 Tourism in City of Port Phillip.....	9
3. Existing dog friendly areas	10
3.1 Dog off-leash areas	10
3.2 Dog Parks	11
3.3 Dog Friendly Beaches	11
3.4 Shared sports reserves	12
4. Dog demographics.....	13
4.1 Registered dogs in the City of Port Phillip.....	13
4.2 Where do our dogs live?.....	14
4.2.1 Municipal wide	14
4.2.2 City of Port Phillip neighbourhood breakdown of dog ownership	14
4.2.3 City of Port Phillip neighbourhood breakdown of housing and registered dog densities	15
4.2.4 City of Port Phillip population density compared to Greater Melbourne	16
4.3 What breeds of dog lives in City of Port Phillip?.....	18
4.4 Dog counts	18
5. Benchmarking of other inner Melbourne metropolitan Councils.....	19
5.1 Other inner Melbourne metropolitan Council demographics	20
5.2 Dog ownership	20
5.3 Provision of dog off-leash areas	21
Appendices	25
Appendix 1. Dog off-leash reserves managed by the City of Port Phillip.....	25
Appendix 2. Dog off-leash reserves within Albert Park Reserve managed by Parks Victoria	34
Appendix 3. Dog parks	35
Appendix 4. Dog friendly beaches	36
Appendix 5. The current top 20 breeds registered in the City of Port Phillip.....	41
Appendix 6. Dog Count Data	43

Appendix 7. Dog Ownership benchmarking in other inner Melbourne metropolitan Councils..... 46

Appendix 8. The provision of dog off-leash areas in other inner Melbourne metropolitan Councils 48

Appendix 9. Other inner Melbourne metropolitan Council’s provision of fully enclosed dog off-leash spaces and dog parks..... 49

Appendix 10. Beach Provision benchmarking for other inner Melbourne metropolitan Councils 51

1. Introduction

The Dog Off-Leash Guidelines Background Report provides a detailed overview of the current “state of play” of dogs and dog related infrastructure in the municipality, including:

- Dog demographics
- Existing dog off-leash facilities
- Benchmarking of neighbouring councils and how it compares to the City of Port Phillip.

This report will help shape the development of the Dog Off-Leash Guidelines (The Guidelines) and forms part of the information provided to the deliberative panel for Phase 2 of the engagement process along with the outcomes of Phase 1 community engagement.

Phase 1 Community Engagement

Phase 1 community engagement was undertaken (late 2022 and early 2023) to understand the diversity of community views about sharing open space with dogs that would provide background information for draft report.

The Phase 1 community engagements undertaken were:

- 18 pop-up or intercept sessions in parks and beaches – 385 participants
- Have Your Say online survey – 2195 participants
- Have Your Say online forum – 48 participants
- 3 x workshops with 10 impacted community organisations – 10 participants

Council officers investigated internally and externally to gather information on:

- Population demographics to understand dog population and other demographic characteristics that impact demand for dog off-leash areas and may impact future planning.
- Existing dog off-leash facilities in the municipality to understand current provision in Port Phillip.
- Dog counting audits to identify peak usage times and spaces.
- Benchmarking of neighbouring councils and how they compare to the City of Port Phillip, to understand provision of dog facilities, demographics, ownership, shared use of sports fields and beaches in neighbouring LGAs. Useful information was gathered about complexities and challenges of catering for different needs and differing expectations with limited space, and the measures neighbouring Councils have implemented to address conflict.

1.1 Early Findings

Population Growth and Urban Living

- The City of Port Phillip has experienced a steady increase in registered dogs over the past five years.
- Dog ownership within the municipality is likely to increase as population increases. There is a high correlation between population growth and number of registered dogs.
- Many of our registered dogs are living in apartments without access to private open space.
- City of Port Phillip neighbourhoods of Balaclava & East St Kilda, and St Kilda & St Kilda West have ranked 2nd and 3rd in both housing density and dog registrations but have limited access to dog off-leash areas.
- Based on the City of Port Phillip's dog registrations, small to medium dogs are preferred by residents.
- Port Phillip will continue to experience an increase of medium to high density living.
- There is an even distribution of registered dogs across the City of Port Phillip.

Dog off-leash areas and usage

- The most popular time for dog exercising is after 5pm.
- Alma Park West is the standout in terms of dog numbers and usage.
- Larger areas and sports reserves are preferred for exercising dogs.
- In comparison to other Local Government Area's (LGA) benchmarked, the City of Port Phillip's current provision of off-leash spaces in terms of number of dogs per space is in the middle range and slightly below neighbouring Council average of 487 dogs per off-leash space. However, City of Port Phillip's dog off-leash areas currently offered are unevenly distributed across the municipality.
- Port Phillip has the highest number of registered dogs compared to land area of the eight LGAs benchmarked.
- Neighbouring LGAs are experiencing similar challenges in achieving harmonious shared use of space.

2. Background Information

At the Ordinary Meeting of Council on 3 November 2021 Council, in response to the petition for changes to the dog-off leash times on the foreshore, endorsed no changes to the restrictions. “That Council: 3.5 approves funding for 2021/22 and a further funding in 2022/23 to commence a review of dog restrictions in open spaces including beaches”.

The *Places for People: Public Space Strategy 2022 – 2032* included a short-term priority action to ‘investigate opportunities for new, and review permitted times in existing, dog off-leash areas (in all open spaces, including beaches)’.

The Domestic Animal Management Plan (DAMP) adopted by Council in 2022, includes actions and recommendations regarding off leash areas, proposed restrictions, and provision of new fenced off leash areas. A key recommendation in the DAMP *Theme 2: Balancing the need for dog friendly areas with other open space uses (page 13)* specifically refers to the following action:

- Develop criteria for dog off-leash parks and investigate opportunities for new, and review permitted times in existing, dog off-leash areas, in all public open spaces including beaches.

In 2021, during consultation on *Council’s Places for People: Public Space Strategy 2022 – 2032* and the DAMP, the development of these documents attracted a variety of feedback on dog off-leash areas. Some community members expressed interest in more dog off leash areas and considered that there is a lack of these across the city. Conversely a portion of community respondents also noted that there are too many dog off-leash areas and wanted restrictions on use of public spaces.

There was strong community support to ensure there are adequate numbers of dog off-leash areas available to residents across the municipality. A portion of the community respondents requested that some spaces are kept free of dog off-leash areas, or allocate hours when dogs are required to be on-leash to ensure safe, uninhibited access to public spaces.

Council committed to preparing Dog Off-Leash Guidelines. The Guidelines will outline Council’s position on the provision, distribution, design, and management of dog facilities in public open spaces. This includes dog off-leash areas and designated dog parks. The clear distinction between dog off-leash areas and designated dog parks is: off-leash areas are multipurpose areas while designated dog parks are fenced single purpose spaces.

A key objective of the Guidelines is to ensure Council is providing equitable access for all using public spaces, and dog off-leash spaces are one of those considerations, alongside sport, playgrounds, passive recreation, reflection and quiet spaces.

2.1 Definitions

Dog off-leash areas: “A dog-off leash area is a public area that is not supervised by trained staff in a controlled environment. Dogs can run freely and play without restriction; however they must always remain under effective control and owners must be within 50 metres of their dog. The safety of both people and dogs depends on owners being responsible and adhering to good park etiquette.” – *Unleashed: A Guide to Successful Dog Parks*

Dog park: “A dog park is a designated public area that’s been set aside for dog guardians to legally exercise, play and socialise with their dogs off-leash in a secure environment. The park is fully enclosed or fenced and has amenities that make it clear that dogs are invited, not just permitted.” – *Unleashed: A Guide to Successful Dog Parks*

Dog friendly beach: “A dog friendly beach is a designated areas on a beach where dogs are permitted to be off-leash”.
– *Agriculture Victoria*

2.2 Sharing our open space and beaches with dogs

The City of Port Phillip *Places for People Public Space Strategy 2022 – 2023 Volume 2* (page 16 of 21) states several relevant key moves:

- Design and manage spaces for more than one use to increase appeal and level of use (e.g. sporting facilities, dog off-leash areas, events, casual and unplanned activities and play etc).
- Investigate opportunities for new dog off-leash area in all open spaces, including beaches. Review permitted times in existing areas.
- Prepare an overarching framework to support Council in managing the shared use of public open space. This includes, but is not limited to, formal and informal sport and recreation, commercial uses, festivals, events and activations, dogs, community gardens and public space infrastructure.

The supporting document, *Public Space Strategy Technical Report November 2020*, also uses an overarching principle of sharing public open space. The recommendation for Council (5.5-23) was “The principle of sharing open space will underpin the design of all future upgrades to existing public open space and guide the design of new public open space”. With an increasing population of people and higher numbers of dog ownership within the municipality there is a need for guidelines that will give Council and the community a greater understanding and a framework for sharing open space with dogs.

The community consultation on Council’s *Places for People: Public Space Strategy 2022-2032*, demonstrated the diversity of views held about sharing parks and beaches with dogs. The community felt there was both a lack of, and too many, dog off-leash areas across the City of Port Phillip. There was strong community support to ensure there is an adequate number of dog off-leash areas available to residents across the municipality. Conversely, the community requested

that some spaces are kept as dog on-leash areas, or hours are allocated when dogs are required to be on-leash to ensure safe, uninhibited access to public spaces.

Council has an ongoing challenge to cater for different needs and differing expectations with limited available space, and provision of space for exercising dogs is part of that challenge.

2.3 City of Port Phillip's population growth

The current population in the City of Port Phillip is 103,508. The population is projected to grow to 163,508 by 2041, an increase of approximately 60,000 people (Source: Forecast ID), with the majority of this growth projected to occur in Fishermans Bend. The City of Port Phillip has already experienced population growth and increasing urban density over the past 10 years. By 2041 Fishermans Bend will be transformed into a medium to high density residential and mixed-use precinct. Fishermans Bend open spaces are envisioned as multi-use and multi-functional.

High density and vertical living will place considerable strain on already well used public spaces and we have seen a trend towards increasing numbers of pets living in apartments. A rise in density will place more pressure on our parks and the foreshore to function as people's backyards therefore increasing the need multifunctional spaces to cater for a broad range of users including dog owners.

There will be a need for additional local public open spaces in selected locations across other parts of the municipality as the population grows and the area redevelops to accommodate the forecast population growth. There are also some parts of the City where there are gaps in the provision of existing open space and no or very little change is forecast.

2.4 Tourism in City of Port Phillip

In the years 2021/22 there were 141,308 overnight international visitors to City of Port Phillip, 384,406 domestic overnight visitors (Source: Forecast ID) so just over ½ million visitors. St Kilda is the second most popular tourist destination in Victoria (Phillip Island Penguins being number one). The foreshore stretching between Albert Park and Elwood attracts large visitor numbers, with St Kilda beach being particularly popular for dog walkers, tourists, day trippers and water based recreational users i.e. kite surfing, swimming, and stand-up paddle boarding. A diverse range of commercial recreation providers operate within the foreshore area ranging from personal trainers, sky diving, beach volleyball, and kite boarding.

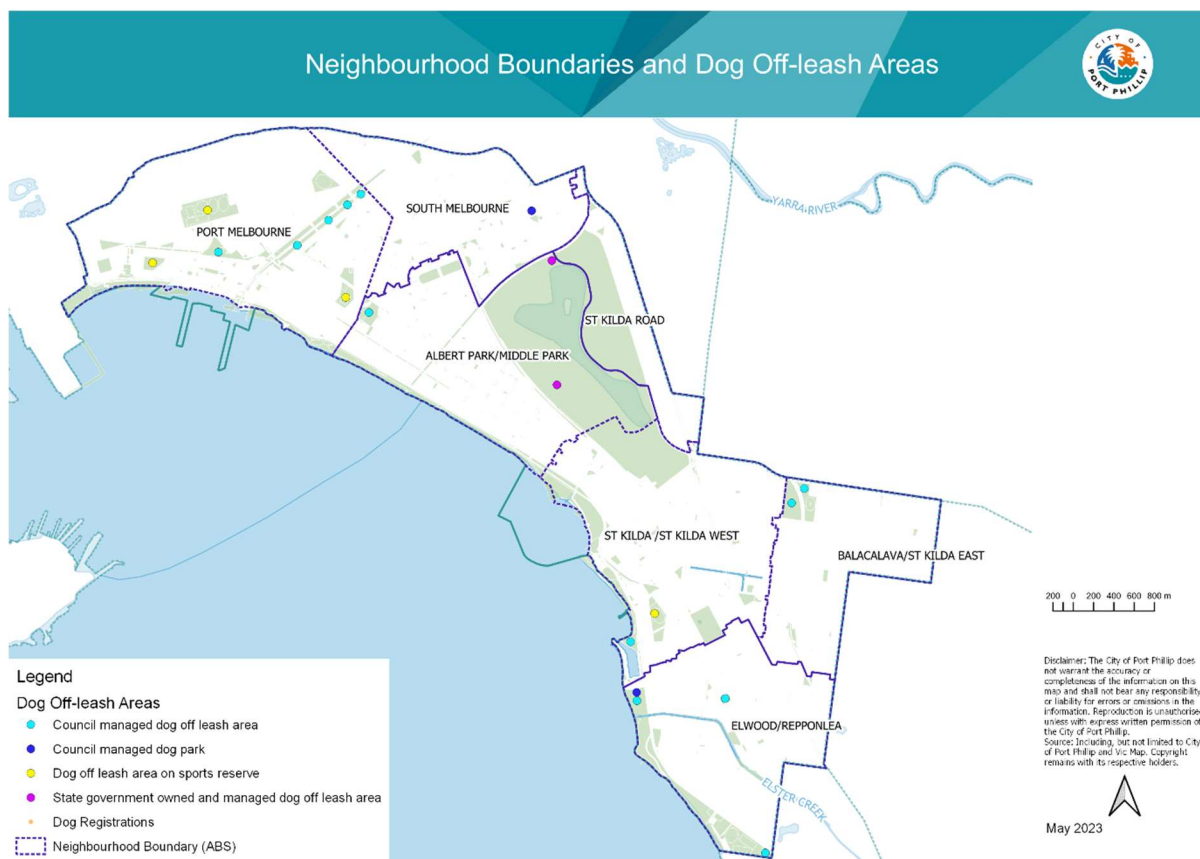
3. Existing dog friendly areas

There are three kinds of dog off-leash spaces within the City of Port Phillip:

- Dog off-leash areas
- Dog parks
- Dog friendly beaches

3.1 Dog off-leash areas

The City of Port Phillip has a number of dog off-leash spaces in parks and reserves.



Within in the City of Port Phillip there is approximately 353 hectares of public open space, containing 16 dog off-leash reserves (12.18% or approximately 43.13 hectares) managed by Council.

Albert Park Reserve (managed by Parks Victoria) has two areas designated for dog off-leash, contributing a further 10.8 hectares. One designated dog off-leash reserve on Aughtie Drive is an area surrounding sporting fields and facilities. The second reserve is a linear strip adjacent to Albert Road.

Refer to Appendices 1 and 2 for more information on dog off-leash reserves located with the City of Port Phillip.

3.2 Dog Parks

There are two fenced dog parks within Port Phillip:

1. Eastern North Reserve, South Melbourne
2. M.O. Moran Reserve, St Kilda (opened November 2022)

Currently 0.76Ha or 0.2% of the City's public open space is designated exclusively for dogs in the form of fenced dog parks.

Refer to Appendices 3 for more information on dog parks located with the City of Port Phillip.

3.3 Dog Friendly Beaches

There is approximately 11kms of foreshore within the City of Port Phillip. The foreshore area includes open space reserves, path networks, piers, jetties and beaches.

Within this foreshore areas there is over 7 kilometres of beach consisting of:

1. Sandridge Beach
2. Port Melbourne Beach
3. South Melbourne
4. Middle Park Beach
5. St Kilda Beach (including West Beach and St Kilda Harbour beach)
6. Elwood Beach

The six beaches offer 15 different zones with varying dog off-leash conditions. The conditions are indicated by signage located at entrance points to the beaches. Dog restrictions apply along the beachline and on paths, and boardwalks. Around the foreshore reserves, on paths and boardwalks, dogs are required to be on-leash.

Currently there are 5 areas where dogs are permitted at all times:

1. Sandridge Beach
2. Port Melbourne Beach
3. St Kilda Beach
4. St Kilda West Beach
5. St Kilda Harbour Beach

There are two areas of beach where dogs are prohibited:

- Port of Melbourne Corporation Land, which includes Perc White Nature Reserve
- St Kilda West Nature Walk

Refer to Appendices 4 for more information on dog friendly beaches located with the City of Port Phillip.

Additionally the link below provides more information on the City's dog friendly beaches - Dog parks and beaches - City of Port Phillip

[Dog parks and beaches - City of Port Phillip](#)

3.4 Shared sports reserves

The City of Port Phillip manages nine sporting reserves, of which four are currently dog off-leash areas when they are not in use by sporting clubs for match day or training. These four sites represent 20 Hectares or 47% of the City's existing Council managed dog off-leash areas.

It must be noted that one of the four sports reserves, J.L. Murphy Reserve, is a significant contributor towards the existing dog off-leash provision at 13.75Ha or 32% of the existing dog off-leash areas managed by the City.

The table below provides a breakdown of the sports reserves that dogs can access off-leash, highlighting that 9 of the City's 15 sports fields are available when they are not in use by sporting clubs for match day or training.

Sporting reserve	Sports field
J.L. Murphy Reserve, Port Melbourne	3 Soccer Pitches, 2 Ovals and 1 Baseball Diamond/field.
Peanut Farm Reserve, St Kilda	Oval
Lagoon Reserve, Port Melbourne	Oval
Julier Reserve, Port Melbourne	Oval

Dogs must be on a leash within 20m of an organised sporting event or training and are not allowed on the playing surface. If the scheduled events are cancelled or do not proceed for any other reason, then dog restrictions no longer apply for that scheduled time. The City of Port Phillip publishes schedules of events and games on the website

<https://www.portphillip.vic.gov.au/explore-the-city/sport-and-fitness/sporting-reserves-and-grounds>

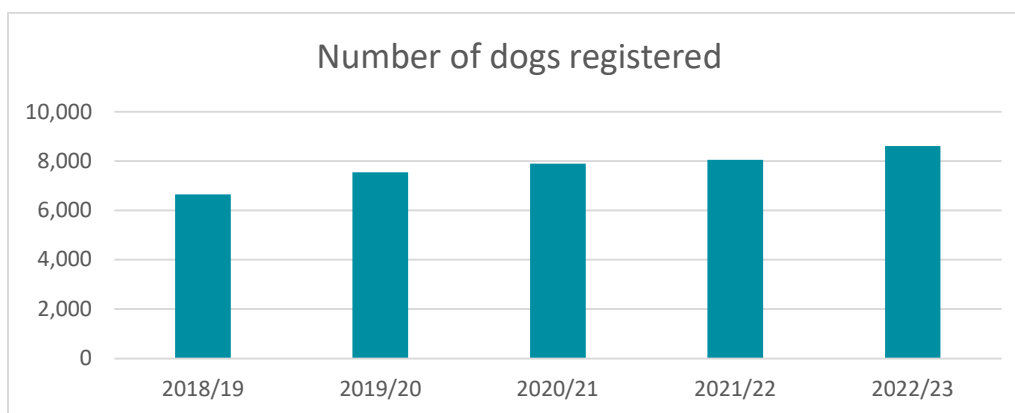
4. Dog demographics

4.1 Registered dogs in the City of Port Phillip

Dogs are a prominent part of the City of Port Phillip community. The graph and table below, of registered dogs in the municipality, highlights that there has been a steady increase in the number of dogs registered in the City over the past 5 years.

Pet ownership in Australia increased during the COVID-19 pandemic. Research conducted by LaTrobe University stated that pet ownership increased approximately 10 per cent, with almost 70% of households now owning a pet. Research into pet ownership during Covid (PLOS ONE published in 08/2022) found that 1 in 5 families acquired a new cat or dog during the pandemic to assist with family wellbeing. The increase in dog registrations experienced by the City of Port Phillip during COVID 2020-2022 aligned with State and National trends.

Given that dog registrations increased pre and post Covid, and with the forecast population growth for the City of Port Phillip, it is a reasonable assumption that the number of dogs registered will continue to increase.



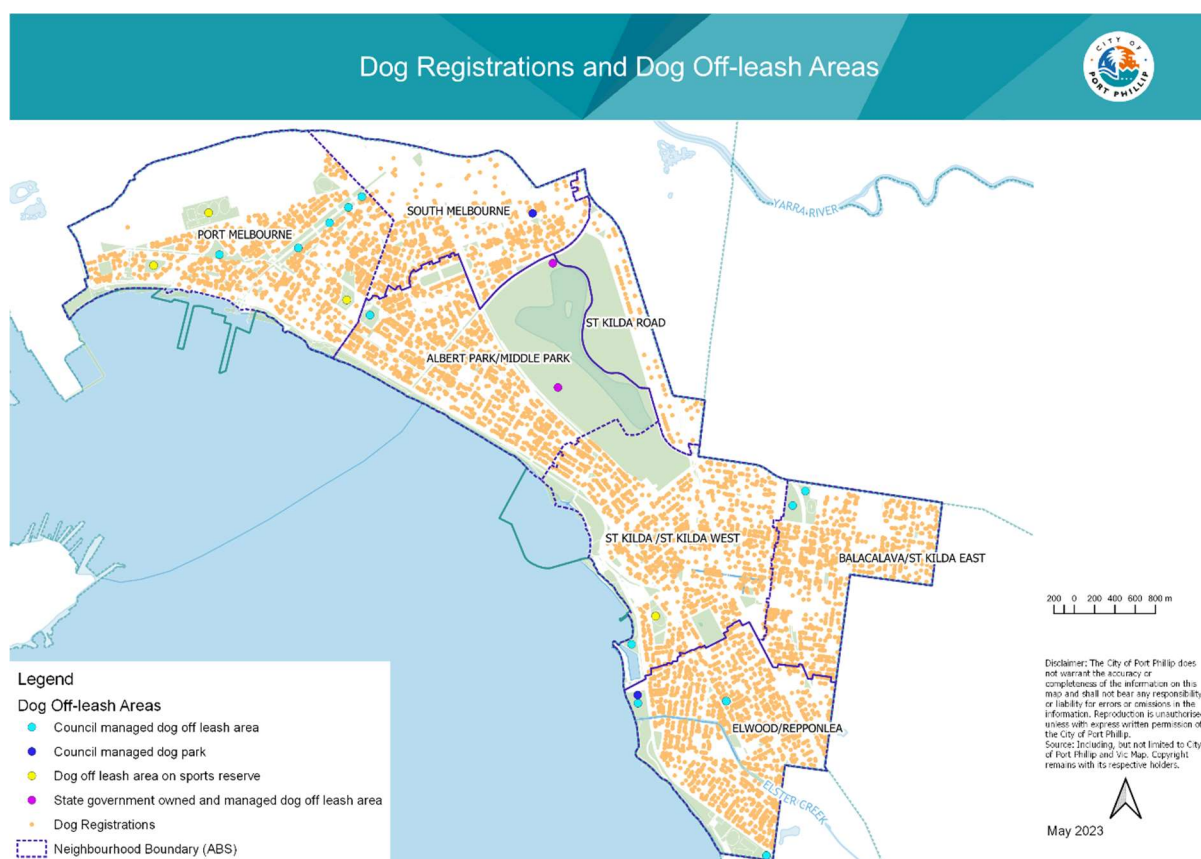
Year	2018/19	2019/2020	2020/21	2021/22	2022/23
Number of dogs registered	6,656	7,543	7,901	8,059	8,617
		13.32% increase	4.75% increase	2% increase	6.9% increase

4.2 Where do our dogs live?

4.2.1 Municipal wide

The map below provides a visual representation of where the City's registered dogs live and the distribution of dog off-leash areas and dog parks with the City of Port Phillip.

The map highlights that there is an even spread of dogs across the municipality, and while some areas are well serviced with dog off-leash areas, the distribution is not even.



4.2.2 City of Port Phillip neighbourhood breakdown of dog ownership

The table below provides a neighbourhood breakdown of dog ownership across our nine neighbourhoods. The table revealed that the neighbourhoods with the highest number of registered dogs corresponds to the neighbourhoods with the highest population, with Albert Park/Middle Park being the exception.

The data also shows that residents are more likely to only own one dog rather than multiple dogs. The percentage of properties with more than 1 dog was quite low ranging from 15% in Balacalava and St Kilda East and Albert Park and Middle Park, to 10% in St Kilda Road.

Port Melbourne recorded the highest number of registered dogs, the highest number of properties with a dog and the highest number of properties with more than one dog. It is also the neighbourhood which offers the most dog off-leash areas.

Neighbourhood	Population ABS 2021	Total no. of dogs	No. of properties with a dog	No. of properties with more than 1 dog
St Kilda & St Kilda West	22,865	1731	1503	183
Port Melbourne	17,825	1743	1527	200
Elwood & Ripponlea	16,943	1629	1396	173
Balaclava & East St Kilda	14,036	1027	883	132
South Melbourne	11,865	943	805	118
Albert Park & Middle Park	10,171	1274	1082	162
St Kilda Road	9,815	384	332	34

As mentioned in 2.3 The City of Port Phillip's Population Growth, the population is projected to grow to 163,508 by 2041, an increase of approximately 60,000 people (Source: Forecast ID), therefore it can be assumed that the number of registered dogs will also increase.

4.2.3 City of Port Phillip neighbourhood breakdown of housing and registered dog densities

The table below provides a breakdown of housing density by neighbourhood and registered dogs. St Kilda Road neighbourhood has the highest density, but the smallest population of people and registered dogs.

Balaclava, St Kilda East, St Kilda and St Kilda West neighbourhoods have ranked 2 and 3 in both housing density and dog registrations but have limited access to dog off-leash areas. Therefore, it is reasonable to assume that high density living and limited access to public open space is not an impediment to owning a dog, and those dog owners will rely on travelling further to access public open space for exercise and provide stimulation and socialisation for their dogs.

Neighbourhood	Population ABS 2021	Density (persons / Ha)	Registered Dogs
St Kilda Road *	9,815	79.86	384
Balaclava & East St Kilda	14,036	67.80	1,027
St Kilda & St Kilda West	22,865	62.13	1,731
Elwood & Ripponlea	16,943	58.62	1,629
South Melbourne	11,853	48.90	943
Port Melbourne	17,825	39.02	1,743
Albert Park & Middle Park	10,171	27.26	1,274
Total	103,508		

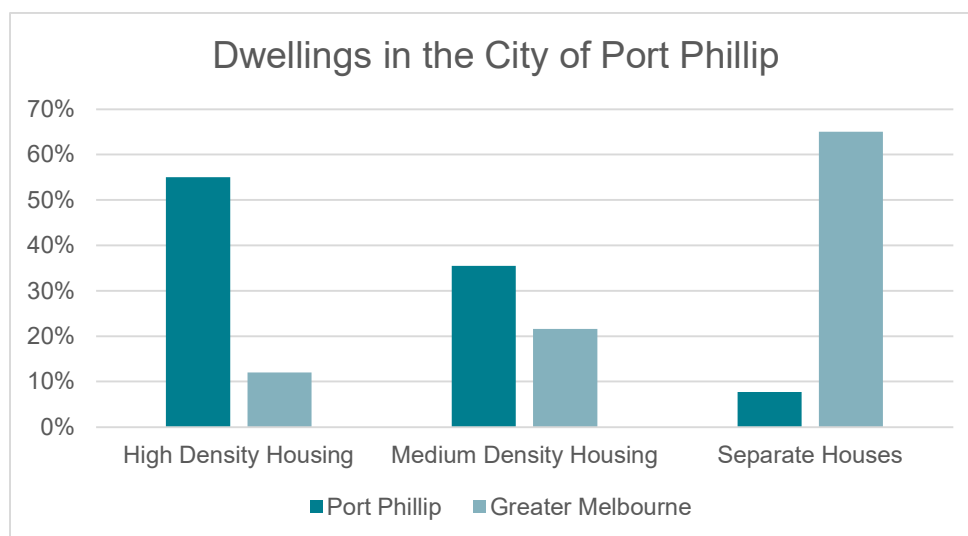
*The section of St Kilda Road located within City of Port Phillip

4.2.4 City of Port Phillip population density compared to Greater Melbourne

ABS data provides a breakdown of dwelling types which is an indication on how our dogs live. Dwelling type will provide direction on the amount of private open space dogs may have access to. Also dwelling type is an important demographic characteristic that determines demand for dog off-leash areas and may impact future planning. A greater concentration of higher density dwellings is likely to attract more young adults and smaller households, often renting. Larger, detached, or separate dwellings are more likely to attract families and prospective families.

The 2021 Census Results identified there were 63,169 dwellings in the City of Port Phillip. The table and graph below clearly demonstrate that City of Port Phillip has significantly more high density living compared to Greater Melbourne.

	High Density Housing	Medium Density Housing	Separate Houses
Port Phillip	55%	35.5%	7.7%
Greater Melbourne	12%	21.6%	65%



Visual representation of housing density in City of Port Phillip compared to Greater Melbourne

From 2016 to 2021, the medium and high-density housing occupancy in the City of Port Phillip increased by approximately 5,532 dwellings, whereas the separate house occupancy increased by 3 dwellings.

This data suggests that given the amount of existing high density living we can assume that many of our registered dogs are living in apartments without access to private open space and the number will continue to grow in line with population growth. DAMP (page 8) adds weight to this assumption stating that *"high density and vertical living will place considerable strain on already well used public spaces and we have seen a trend towards increasing numbers of pets living in apartments."*



4.3 What breeds of dog lives in City of Port Phillip?

In addition to evaluating where and how our dogs live, the type of dogs living in the City have also been assessed. The breeds of dog and their size can help determine the provision of dog off-leash spaces.

Based on registered breeds, there are currently over 400 breeds/cross breeds of dog in the City of Port Phillip. At present, the top four dog breeds are:

1. Cavoodle - 687 (small breed)
2. Labrador - 347 (large breed)
3. Staffordshire Bull Terrier - 335 (small breed)
4. Golden Retriever - 255 (large breed).

Of the top 20 breeds in the City of Port Phillip, the Cavoodle was the most popular breed of dog registered.

The top 20 dog breed sizes, broken down:

- 1,932 or 43% - Small sized dog (8 of the top 20)
- 1,374 or 31% - Medium sized dog (7 of the top 20)
- 1,173 or 26% - Large sized dog (5 of the top 20)

This information highlights that City of Port Phillip residents are more likely to choose a small to medium breed of dog.

Refer to Appendix 5 for table with the current top 20 breeds registered in the City of Port Phillip.

4.4 Dog counts

Dog counts were undertaken across 18 dog off-leash spaces within the City of Port Phillip during February and March 2023 over a 14-day period. The breakdown of spaces was: 10 dog off-leash reserves including sports fields, 2 dog parks (fenced) and 4 dog friendly beaches. The counts were undertaken at random times, across a variety of weather conditions. The aim was to ensure that key times of the day were covered such as before and after work.

From the data collected the following findings were observed:

- The after 5pm timeslot recorded the highest number of dogs for both reserves and beaches.
- Alma Park West was the standout in dog numbers, it being almost double the average number of dogs per dog count.
- Dog counts were higher in larger reserves/open spaces

Refer to Appendix 6 for expanded dog count data.

5. Benchmarking of other inner Melbourne metropolitan councils

To provide a greater understanding of the provision of dog off-leash areas in Melbourne comparatively to the City of Port Phillip and to inform the guidelines, eight councils were benchmarked. The benchmarking exercise included desktop research and review of Domestic Animal Management Plans (DAMPs), information on council websites and any existing guidelines or strategies. In addition to this, stakeholder interviews were conducted with all eight councils, typically with an open space officer and a local laws/ animal management officer, to gain further insight into the issues and management of dogs in open space and address any information gaps from the desktop research. Councils were also asked to provide specific data on the types of spaces provided for dogs in the municipality.

The councils that were benchmarked were:

- City of Melbourne
- City of Yarra
- City of Stonnington
- City of Bayside
- City of Glen Eira
- City of Kingston
- City of Boroondara
- Hobsons Bay City Council.

5.1 Council demographics

The councils benchmarked were selected for comparison as they are close to Port Phillip geographically and have similar characteristics in terms of population, size (land area), and/ or key features such as foreshore that were important to compare. The table below summarises this information.

	Land Area (size of municipality)	Resident Population	Open space	Foreshore	Registered Dogs
	<i>km²</i>	<i>2021 estimate</i>	<i>Ha</i>	<i>km</i>	<i>2021</i>
Bayside	37.19	102,337	416	17	12,481
Boroondara	60.17	169,901	595	N/A	15,960
Glen Eira	38.67	150,685	171	N/A	12,998
Hobsons Bay	64.2	92,275	1,759	23	11,154
Kingston	91.31	159,567	559	13	14,272
Melbourne	37.33	153,674	555	N/A	4750
Stonnington	25.63	106,278	172	N/A	8937
Yarra	19.53	91,543	264	N/A	6,791
Port Phillip	20.58	103,508	353	11	8747

Council demographics and statistics

5.2 Dog ownership

The key findings in terms of dog ownership were:

- Approximately one in twelve residents within CoPP own a dog, which is in line with dog ownership numbers of other inner Melbourne metropolitan Councils
- CoPP has the highest density of dogs in relation to size of municipality
- CoPP sits in the middle range (with 25 registered dogs per hectare) in terms of number of registered dogs compared to available open space.

Refer to Appendix 7 for expanded information on dog ownership in other inner Melbourne LGAs.

5.3 Provision of dog off-leash areas

The key findings in terms of provision of dog off-leash areas among other Councils were:

- CoPP is currently providing more off-leash space per dog than the average provided by other Councils benchmarked.
- All Councils noted the challenge in the provision of dog off-leash areas
- The approaches to providing off-leash opportunities varied between Councils

Refer to Appendix 8 for expanded information of the provision of dog off-leash areas in other inner Melbourne metropolitan Councils.

5.4 Dog parks (fenced)

All Councils benchmarked noted the desire from dog owners for fenced dog parks where they can exercise their dogs off-leash. All Councils noted issues with providing these spaces. Some of the common concerns or considerations included:

- Fenced dog parks become single purpose areas i.e., dog users only
- Shared spaces (i.e., dog on-leash or off-leash with other recreational users) benefit the most amount of people
- Finding suitable space to accommodate new fenced dog parks
- Increased cost of dog park infrastructure and maintenance expenses
- Multipurpose areas that include dogs and dog walkers allows the broader community to modulate dog behaviour and dog owner responsibilities
- Fenced dog parks are regarded as 'quick fix' to remove dogs from an area where shared use is contentious
- Dog fights, dog injuries and the spread of infectious dog illnesses/parasites i.e., kennel cough or canine giardia
- Compounding community perception that fenced dog parks are the most beneficial way to exercise and socialise dogs
- Potential for noise
- Increased volume of traffic
- Increased competition for car parking
- Conflict between user groups within current dog off-leash areas such as sports ovals.

The provision of fenced dog parks varied between councils. The table below shows the total number of fully enclosed spaces provided in each municipality as well as the provision of these spaces in the relation to the number of registered dogs. Port Phillip currently has two fully enclosed dog off-leash spaces, with a provision ratio of one space per 4,374 registered dogs. One of the City of Melbourne's dog parks (Kings Way and Moray St Reserve) is close to the Port Phillip municipal boundary and therefore may also service some Port Philip residents in that area.

LGA	Total number of fenced dog parks	Registered dogs per off-leash space
Melbourne	3	1,583
Yarra	3	2,264
Hobsons Bay	5	2,789
Kingston	5	2,854
Stonnington	3	2,979
Port Phillip	2	4,374
Bayside	2	6,241
Glen Eira	1	12,998
Boroondara	1	15,960

Provision of fenced dog parks by LGA

Refer to Appendix 7, for further information on fully enclosed dog off-leash spaces and dog parks in each municipality.

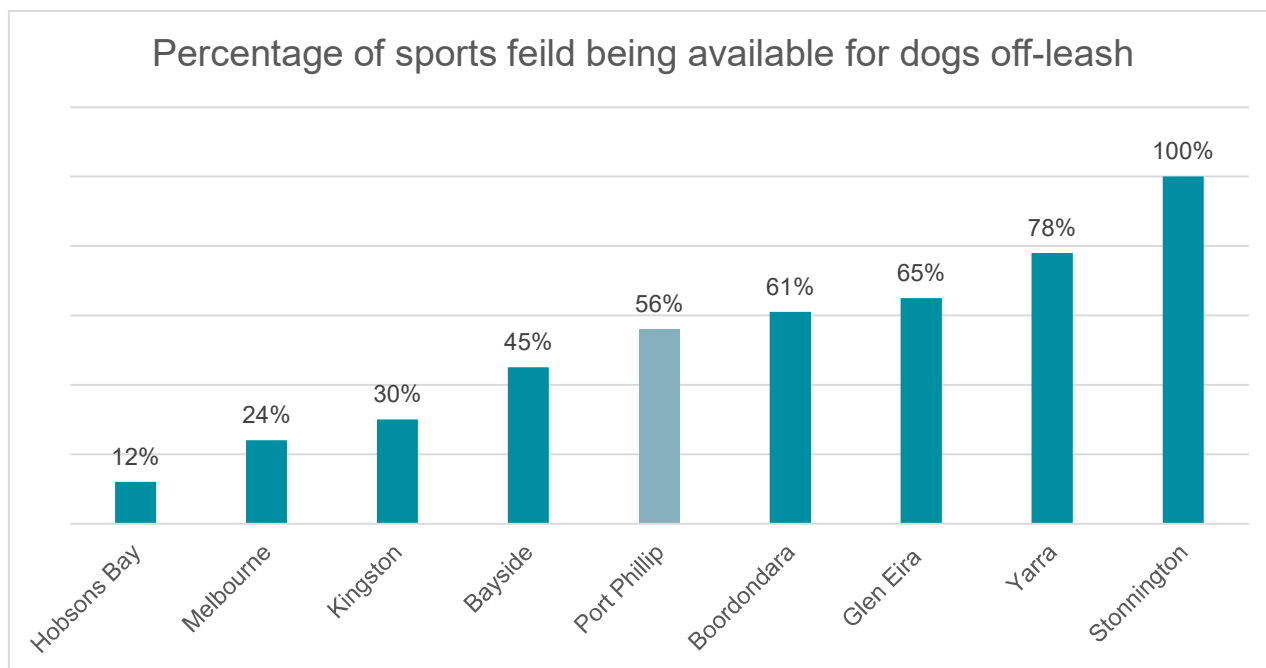
5.5 Distribution of dog off-leash areas

Most councils acknowledged the importance of providing dog off-leash areas that are convenient for residents. However, councils noted there are many constraints that limit what can be achieved in terms of ideal distribution of off-leash areas and therefore most did not have a strategic way of providing/ choosing the location or geographical spread of dog off-leash areas. This also meant that it is likely that some areas of the municipality will have better provision of dog off-leash areas than other. The main constraint was the availability and suitability of existing open space sites to be off-leash, considering most councils have to work with the space they have. Suitability included the following considerations:

- Other existing uses of the space
- Sensitive flora and fauna
- Proximity to roads and other public assets (such as playgrounds)
- Community expectations

5.6 Sports ground provision and issues

Of the eight councils benchmarked, all allowed dogs to access most sports grounds throughout the municipality. Only three of the eight councils have select sports grounds where dogs are prohibited. However, councils varied significantly in how many sports grounds require dogs to be on-leash, compared to off-leash. The average was 57% of sports grounds being dog off-leash areas, with Hobsons Bay providing the least at 12% and Stonnington the most, with all sports grounds being off-leash. Port Phillip current sits in line with the average with 56% of sports grounds being off-leash areas.



All councils noted significant and ongoing issues with dogs being off-leash at sports grounds. Almost all issues were around conflict between user groups and council providing successfully for shared use of the space. The most common concerns are listed below:

- Conflict of use between sports clubs and dog owners with dogs off-leash at sports grounds when they shouldn't be:
- During sport training and matches
- At designated on-leash ovals
- Dog owners letting their dogs off-leash on sports grounds and not monitoring the dog's behaviour, causing angst for other users/fear of uncontrolled dogs
- Dog owners not picking up after their dogs, resulting in safety hazards for sports club participants and other users
- Dogs digging up sports grounds causing the need for increased maintenance and a safety issue for organised sport
- Councils providing equitable access to sports grounds and ensuring there is enough time for dogs to be off-leash on sports grounds when organised sport isn't on
- Dog owner expectations that they can use sports grounds in the same way that they did during Covid lockdowns (and during breaks between seasons) when there was no organised sport scheduled.

While councils acknowledged that there is no silver bullet and achieving harmonious shared use of space is a complex challenge, some of the measures that councils have implemented to address the issues listed above include:

Conflict of use/shared use of space:

- Increasing visibility and presence of Council officers at sports grounds by ensuring officers walk around the ground, wear high-vis, and speak to club representatives who may be present
- When allocating sports clubs to grounds (especially for training), consider which ovals are on-leash vs off-leash and try to 'free-up' more time on dog off-leash sports grounds

- Turning on/leaving sports ground lighting on during winter outside of times booked for organised sport to allow for dog walking at off-leash ovals
- Developing sports ground etiquette standards/code of conduct involving sports clubs and dog walkers to bring the two key user groups together and find common ground on how they can collectively share and care for the space
- Signage at all sports ground entry points with QR codes that link to the sport allocations schedule on council website
- Providing clubs with A-frame signs saying, 'training in progress' and installing additional signage at troublesome spots including "put your dog on a leash when sport is being played".

Digging and damage:

- Providing piles of soil on site at sports grounds so clubs and park officers can fill the holes
- More inspections at the areas where dogs target e.g. in front of seats and coaches boxes
- Specific Friday maintenance schedule to fill dog holes at sports grounds before weekend matches
- Consideration to add a specific offence in the Council order that states if a dog is digging up the turf on a sports ground, then it is not considered to be 'under effective control'.

Dog owners not fulfilling their responsibilities:

- Removing the gates at off-leash sports grounds so dog owners are required to be more attentive to their dogs
- Providing A-frame signs to clubs noting dog restrictions


5.7 Beach provision and restrictions

To understand how other councils approach provision for dogs at beaches, four foreshore councils in closest proximity to CoPP were benchmarked. These Councils were Bayside and Kingston to the south/east and Hobsons Bay and Wyndham to the north/west. All councils varied in their provision, restrictions, and access to beaches for dogs. Hobsons Bay and Wyndham currently provide no dog off-leash areas regardless of the time of year. However, Wyndham noted that they are in the process of gazetting one area of beach to be off leash year-round. Whereas Bayside and Kingston both provide dog off-leash areas along the foreshore, which change based on season (summer or winter) and time of day. A summary for each council is provided in the appendix 4.

Appendices

Appendix 1. Dog off-leash reserves managed by the City of Port Phillip

Note: The rating given to each reserve is taken from *Public Space Strategy Technical Report November 2020*, the supporting document for *Places for People: Public Space Strategy 2022 – 2032*

Reserve Name	Reserve Location
<p>Head Street Reserve (Local) Elwood</p> <p>Size: Approx. 0.71-hectare</p> <p>Classification: Unfenced public garden with formal established gardens.</p> <p>Infrastructure: Seating, bins and all abilities paths. Shade is provided from mature trees. Street parking is available in Head Street.</p> <p>Rating: The overall amenity of the park is good.</p>	 <p>The map shows an aerial view of the Head Street Reserve area. The reserve is outlined in green and filled with green dog icons. It is located between Head Street to the west and St Kilda Street to the east. Surrounding residential addresses are visible, including 135-137, 139, 427, 419, 34A, 36, 38B, 38A, and 40.</p>

Clarke Reserve (Local)
Elwood

Size: Approx. 0.76-hectare

Classification: Passive open space.

Infrastructure: Unfenced playground, seating, bins and all abilities paths. Shade is provided from mature trees. Street parking is available.

Rating: The overall amenity of the park is good.

**Marina Point Reserve (Regional)**
St Kilda/ St Kilda West



Size: Approx. 2.2-hectare

Classification: Foreshore & part of the Bay Trail

Infrastructure: Public toilets, skate park, car park, limited seating, 2 x drinking fountains, bins, shelter with picnic setting and BBQ.

Rating: The overall amenity of the park is good.



<p>Peanut Farm Reserve (Municipal) St Kilda/ St Kilda West</p> <p>Size: Approx. 2.2-hectare</p> <p>Classification: Mixed use with natural turf sports oval.</p> <p>Infrastructure: Oval available for dog off-leash when not in use by sports clubs for match play or training, 2 x multi-use courts, drinking fountain, fitness equipment, seating, bins, all ability path network, public toilets. Shade provided from mature trees. Street parking is available.</p> <p>Rating: The overall amenity of the park is very good.</p>	
<p>Alma Park East (Municipal) St Kilda East / Balaclava</p> <p>Size: Approx. 1.2-hectare.</p> <p>Classification: Sporting. The sports field (oval) is not part of the dog off-leash area.</p> <p>Infrastructure: Dog off-leash area, north of sports field, south of Dandenong Road. Public toilets, natural turf sports ground, playground, picnic facilities, 2 x BBQs, fitness equipment, seating, bins and all abilities paths. Shade provided from mature trees. Street parking is available.</p> <p>Rating: The overall amenity of the park is good.</p>	

**Alma Park West (Municipal)
St Kilda East / Balaclava**

Size: Approx. 5.35-hectare.

Primary Classification: Public garden.

Infrastructure: Public toilets, shelters, drinking fountain with dog bowl, seating, bins and all abilities paths. Shading provision is from mature trees. Street parking is available.

Rating: The overall amenity of the park is good.



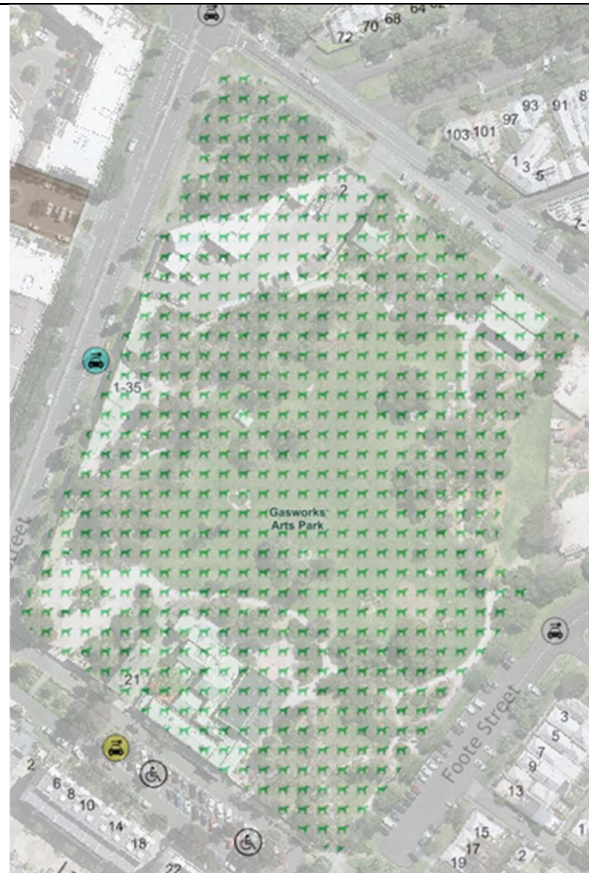
Gasworks Arts Park (Municipal) Albert Park/ Middle Park

Size: Approx 3.92-hectare.

Primary Classification: Cultural heritage park (former gas power station site).

Infrastructure: Art studios, public toilets, drinking fountain with dog bowl, 2 x picnic setting with BBQs, seating, bins and all abilities paths. Shading provided from mature trees. Street parking is available. Home to farmers markets (first Saturday each month) and community events.

Rating: The overall amenity of the park is good.



Lagoon Reserve (Municipal) Port Melbourne



Size: Approx. 2.27-hectare.

Primary Classification: Sporting. Dog off-leash areas includes the sports field (oval)

Infrastructure: Sports field available for dog off-leash use when not in use by sports clubs for match play or training. Public toilets, picnic setting and BBQ, seating, bins. Shade is provided from perimeter mature trees. Street parking is available.

Rating: The overall amenity of the park is good.



<p>Howe Reserve (Neighbourhood) Light Rail Linear Easement Port Melbourne</p> <p>Size: Approx. 0.58-hectare</p> <p>Primary Classification: Linear reserve.</p> <p>Infrastructure: Remembrance Garden, public toilets are located 600m away in Edwards Park or 800m away at the Port Melbourne Tennis Club. Seating, bins and all abilities path. Shade is provided from mature trees. Street parking is available.</p> <p>Rating: The overall amenity of the park is good.</p>	
<p>Page Reserve (Neighbourhood) Light Rail Linear Easement Port Melbourne</p> <p>Size: Approx. 0.46-hectare.</p> <p>Primary Classification: Linear reserve.</p> <p>Infrastructure: Public toilets are located 500m away in Edwards Park or 800m away at the Port Melbourne Tennis Club. Seating, bins and all abilities path. Shade provided from mature trees. Street parking is available.</p> <p>Rating: The overall amenity of the park is average.</p>	

**Smith Reserve (Neighbourhood)
Light Rail Linear Easement
Port Melbourne**

Size: Approx. 0.85-hectare.

Primary Classification: Linear reserve.

Infrastructure: Public toilets are located 300m away in Edwards Park or 800m away at the Port Melbourne Tennis Club. Seating, bins and all abilities path, drinking fountain with dog bowl. Shade is provided from mature trees. Street parking is available.

Rating: The overall amenity of the park is good.



**Hester Reserve (Neighbourhood)
Light Rail Linear Easement
Port Melbourne**

Size: Approx. 2.75-hectare.

Primary Classification: Linear reserve.

Infrastructure: Public toilets at the Port Melbourne Tennis Club. Seating, bins and all abilities path, 3 x picnic settings, drinking fountain with dog bowl. Shade is provided from mature trees. Street parking is available.

Rating: The overall amenity of the park is good.



<p>J. L. Murphy Reserve (Regional) Port Melbourne</p> <p>Size: Approx. 13.75-hectare.</p> <p>Primary Classification: Sporting.</p> <p>Infrastructure: Sports field (oval) is available for dog off-leash use when not in use by sports clubs for match play or training. Public Toilets, picnic areas with BBQs, playground, seating, bins and all ability path network. Street parking is available.</p> <p>Rating: The overall amenity of the park is good.</p>	
<p>Garden City Reserve (Municipal) Port Melbourne</p> <p>Size: Approx. 3.65-hectare.</p> <p>Primary Classification: Public garden.</p> <p>Infrastructure: Dog off-leash in 2-hectare area south of the playground and Dog Obedience Club, playground, picnic settings with BBQs, seating, bins and all abilities paths. Shade provided from mature trees. Street parking is available.</p> <p>Rating: The overall amenity of the park is good.</p>	

R.F. Julier Reserve (Neighbourhood) Port Melbourne

Size: Approx. 1.2-hectare.

Primary Classification: Passive

Infrastructure: 2 x sports courts, drinking fountain with dog bowl, playground, picnic setting, public toilets, seating, bins and all abilities paths. Shade provided from mature trees and street parking is available.

Rating: The overall amenity of the park is good.



M.O. Moran Reserve (Regional) St Kilda

Size: Approx. 4.8-hectare

Classification: mixed use open space

Infrastructure: Public toilets located in marina, drinking fountain with dog bowl, bins and seating, fitness equipment, cycling trail. Street parking and public car park available.

Rating: The overall amenity of the park is good.



Appendix 2. Dog off-leash reserves within Albert Park Reserve managed by Parks Victoria

Reserve name	Reserve Location
<p>Albert Park North Reserve (Regional Park) Managed by Parks Victoria South Melbourne</p> <p>Size: Approx. 1.8 hectare.</p> <p>Classification: Not part of Public Space Strategy.</p> <p>Infrastructure: Public toilets at 12 Aughtie Drive or Bowen Crescent Reserve. Shade provided from mature trees. Street parking is available.</p>	
<p>Albert Park West Reserve (Regional) Managed by Parks Victoria South Melbourne</p> <p>Size: Approx. 8 hectare.</p> <p>Dog off-leash area is restricted to the area surrounding sports fields. Total area including sports fields is 23 hectares.</p> <p>Infrastructure: Public toilets are available at 12 Aughtie Drive or Middle Park Community Centre.</p>	

Appendix 3. Dog parks

Dog Park Name	Dog Park Location
<p>M.O. Moran Reserve (regional) St Kilda</p> <p>Size: Approx. 0.5 hectare within M.O. Moran wider reserve.</p> <p>Infrastructure: Drinking fountain with dog bowl, bins.</p> <p>Rating: The overall amenity of the park is good.</p>	
<p>Eastern North Reserve (neighbourhood) South Melbourne</p> <p>Size: Approx. 0.26 hectare.</p> <p>Time restrictions: Dog off-leash hours between 7:00am and 7:30pm.</p> <p>Infrastructure: Seating, bins and all abilities path Shade provided from mature trees. Street parking is available.</p> <p>Rating: The overall amenity of the park is good but can suffer after rainfall events combined with heavy use.</p>	

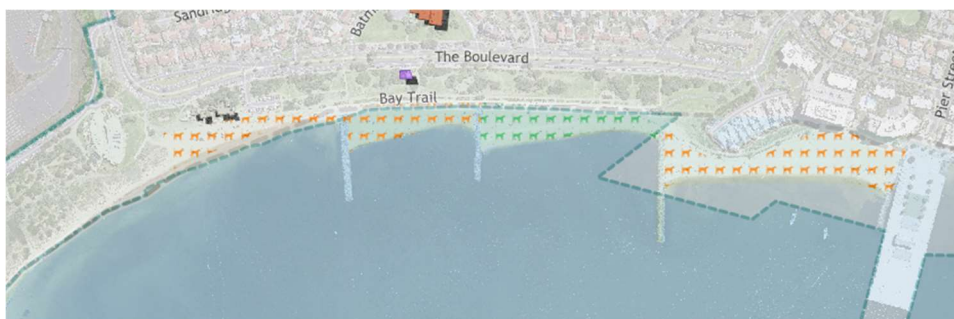
Appendix 4. Dog friendly beaches

Sandridge Beach, Port Melbourne

Length of dog off-leash area: Approx. 1km.

Orange dog icons: Dog restrictions apply 1st April to 31st October dogs are permitted off leash at all times, 1st November to 31st March, dogs prohibited at all times.

Green dog icons: No restrictions apply.



Port Melbourne Beach

Length of dog off-leash area: Approx. 0.6km

Orange dog icons: Dog restrictions apply 1st April to 31st October, dogs are permitted off leash at all times, 1st November to 31st March, dogs prohibited at all times.

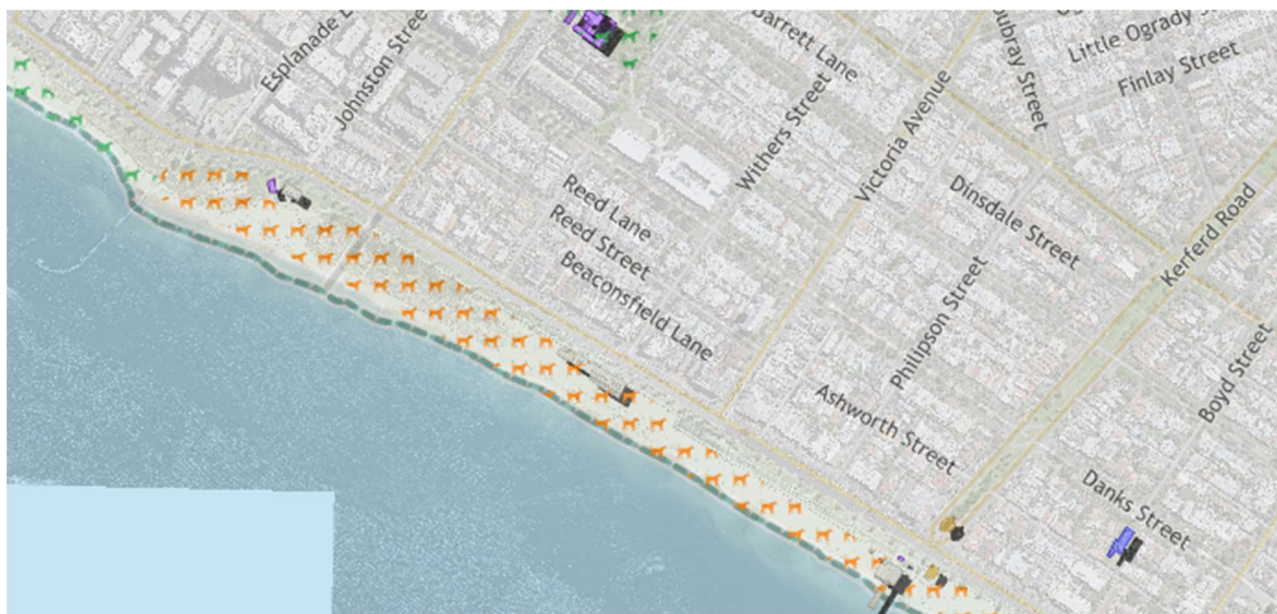
Green dog icons: No restrictions apply.



South Melbourne Beach

Length of dog off-leash area: Approx. 1km.

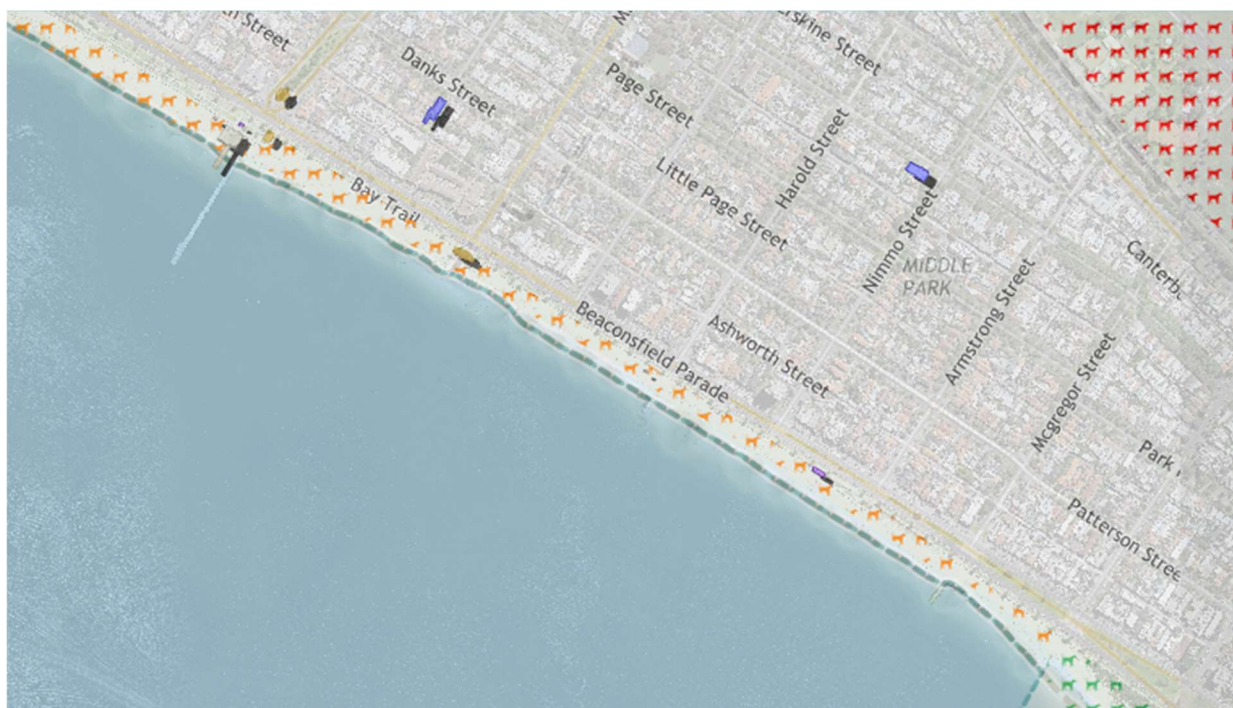
Orange dog icons: Dog restrictions apply 1st April to 31st October dogs are permitted off leash at all times, 1st November to 31st March, dogs prohibited at all times.



Middle Park Beach

Length of dog off-leash area: Approx. 1.4km.

Orange dog icons: Dog restrictions apply 1st April to 31st October dogs are permitted off leash at all times, 1st November to 31st March, dogs prohibited at all times.



St Kilda West Beach and St Kilda Beach

Length of dog off-leash area: Approx. 1km.

Orange dog icons: Dog restrictions apply 1st April to 31st October, dogs are permitted off leash at all times, 1st November to 31st March, dogs prohibited at all times.

Green dog icons: No restrictions apply.

Red dog icons: Dogs prohibited at all times.

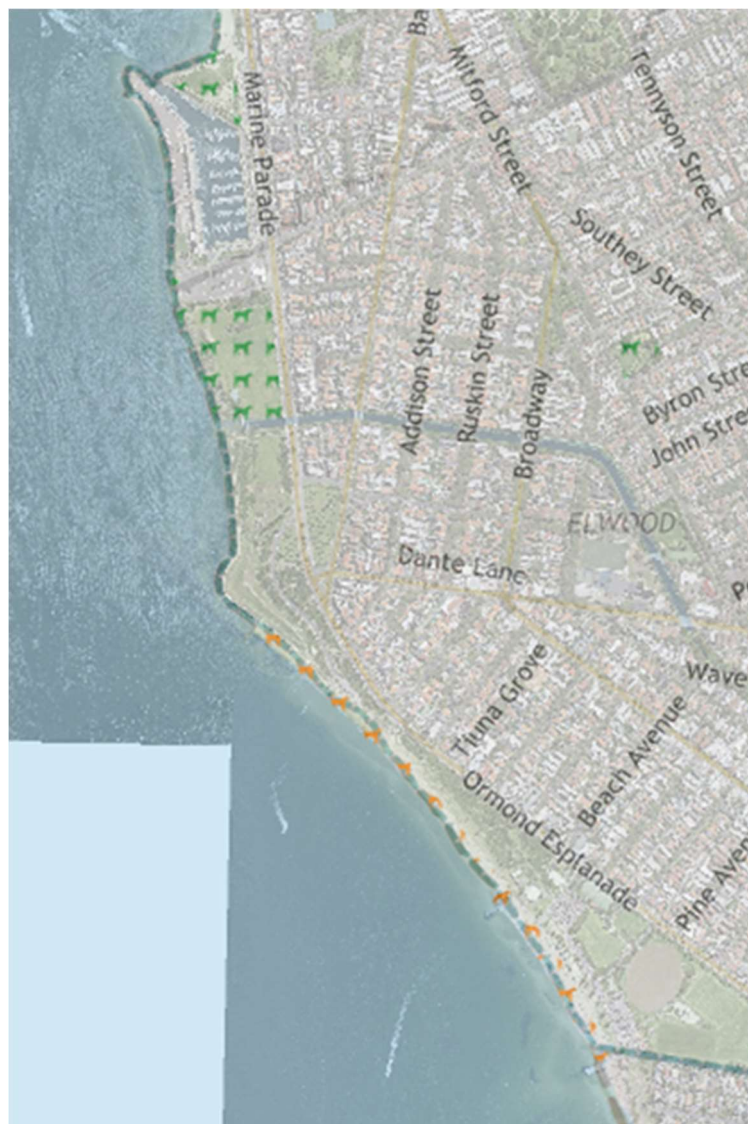


Elwood Beach

Length of dog off-leash area: Approx. 1.2km.

Orange dog icons: Dog restrictions apply 1st April to 31st October, dogs are permitted off leash at all times, 1st November to 31st March, dogs prohibited at all times.

Green dog icons: No restrictions apply.



Appendix 5.

The current top 20 breeds registered in the City of Port Phillip. This represents 4,479 of the 8, 617 registered dogs.

	Primary breed	Breed count	Percentage	Breed size
1	Cavoodle	687	15.3%	Small
2	Labrador	347	7.7%	Large
3	Staffordshire Bull Terrier	335	7.5%	Medium
4	Golden Retriever	255	5.7%	Large
5	Spoodle	239	5.3%	Medium
6	Border Collie	230	5.1%	Medium
7	Jack Russell Terrier	218	4.9%	Small
8	Labradoodle	192	4.3%	Large
8	Groodle	192	4.3%	Large
10	Greyhound	187	4.2%	Large
11	Maltese Terrier X	186	4.1%	Small
12	Schnauzer Miniature	183	4%	Small
13	Bulldog (French)	178	3.9%	Small
14	Toy Poodle	173	3.8%	Small
15	Dachshund	166	3.7%	Small
16	Australian Kelpie X	148	3.3.%	Medium

	Primary breed	Breed count	Percentage	Breed size
17	Cavalier King Charles Spaniel X	146	3.2%	Medium
18	Poodle X	142	3.1%	Medium
19	Cavalier King Charles Spaniel	141	3.1%	Small
20	Staffordshire Bull Terrier X	134	2.9%	Medium
	Total	4,479		

Appendix 6. Dog Count Data

Dog counts were broken down into the following timeslots:

Morning: Before 9:00am

Day: 9:00am – 5:00pm

Evening: After 5:00pm

Weekends: All hours

Dog counts for off-leash reserves

A total number of 1,713 dogs were counted over 186 dog counts at dog off-leash areas or an average of 9 dogs per count. The table below provides a breakdown of the number of counts at each of the timeslots. As the number of counts was not equal across each timeslot an average number of dogs per count for each timeslot has been calculated.

	Before 9am	9am – 5pm	After 5pm	Weekend	Total number
Total number of dogs over 12 off-leash areas	357	436	684	279	1,713
Total number of counts	44	49	53	40	186
Average number of dogs per count	7.4	8.9	12.9	6.9	9.2

Dog count data showing after 5pm the most popular time for dog exercising in off-leash reserves

The following table shows that Alma Park West is clearly a popular area for dogs, with an average of 30 dogs per count.

Off-leash reserve	Morning	Day	Evening	Weekend	Total	Number of dogs	Average number of dogs per count	Size of Park	Type of Park
Alma Park West	6	4	5	4	19	566	29.8	5.3 ha	Passive
Lagoon Reserve	3	6	5	2	16	230	14.4	2.2 ha	Sport
Gasworks	2	4	5	2	13	148	11.4	3.9 ha	Passive
Peanut Farm	4	5	5	5	19	199	10.5	2.2 ha	Sport
Port Melbourne Light Rail (4 parks combined)	3	4	6	1	14	121	8.6	4.6 ha	Passive
JL Murphy	3	4	5	3	15	117	7.8	17.7 Ha	Sport
Garden City	5	3	4	4	16	121	7.6	3.6 ha	Passive
Clarke Reserve	4	4	4	4	16	54	3.4	0.76	Passive
Alma Park East	6	4	4	6	20	56	2.8	1.2	Mixed
Marina Point Reserve	4	4	4	4	16	20	1.3	2.2	Passive

Dog Park	Morning	Day	Evening	Weekend	Total	Number of dogs	Average number of dogs per count	Size of Park	Type of Park
Eastern North Reserve	3	3	2	N/A	8	43	5.4	0.26 ha	Dog park
MO Moran	4	4	4	4	16	87	5.4	0.5 ha	Dog Park

Dog counts for dog friendly beaches

Dog counts were undertaken across 6 dog friendly beaches during March 2023 over a 14-day period. The counts were undertaken at random times, across a variety of weather conditions. The aim was to ensure that key times of the day were covered such as before and after work. The dog counts were undertaken at the following beaches:

1. St Kilda Harbour
2. St Kilda West Beach
3. St Kilda Beach
4. Elwood Beach
5. Middle Park Beach
6. Port Melbourne Beach.

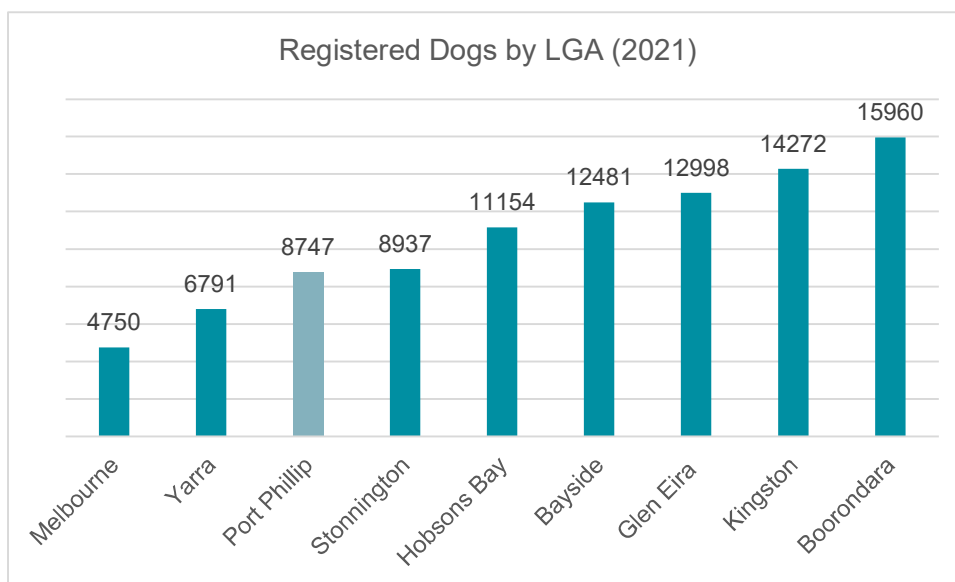
Beach	Morning	Day	Evening	Weekend	Total	Number of dogs	Average number of dogs per count
Port Melbourne	4	4	3	2	13	100	7.7
Middle Park	n/a	1	n/a	2	3	13	6.5
St Kilda West	4	4	4	6	16	95	6
St Kilda	4	4	4	4	16	50	3.1
Elwood	4	4	n/a	4	12	14	1.7
St Kilda Harbour	4	4	4	4	16	18	1.1

	Before 9am	9am – 5pm	After 5pm	Weekend	Total numbers
Number of dogs over six dog friendly beaches	31	53	146	46	290
Number of counts	20	21	15	20	76
Average number of dogs per count	1.5	2.5	9.7	2.3	3.8

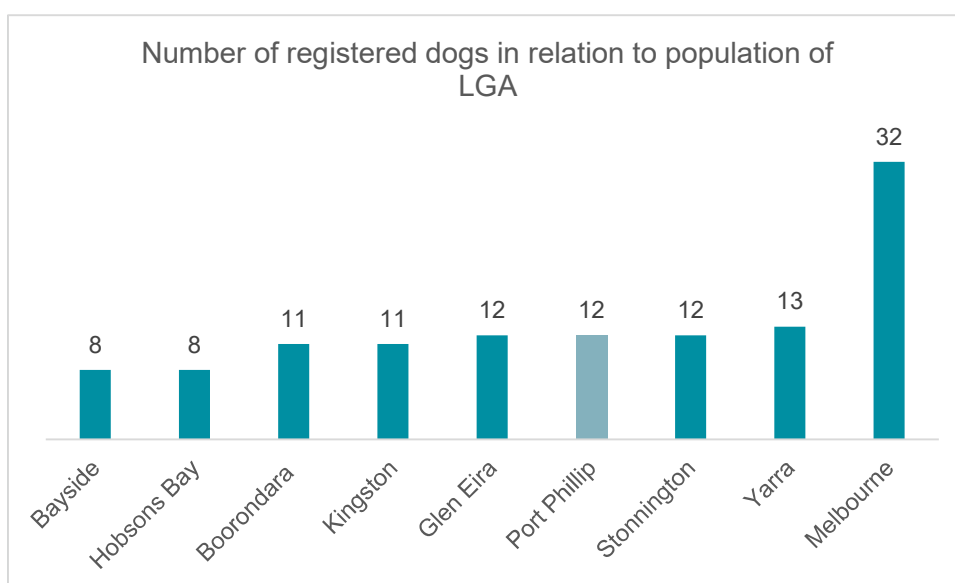
Dog count data showing after 5pm the most popular time for dog exercising on dog friendly beaches.

Appendix 7. Dog Ownership benchmarking in other Councils

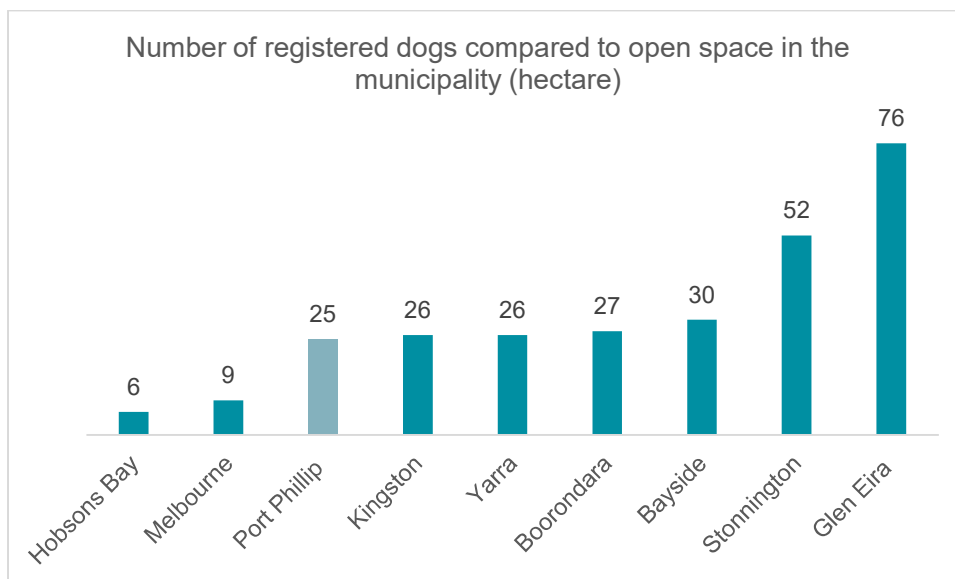
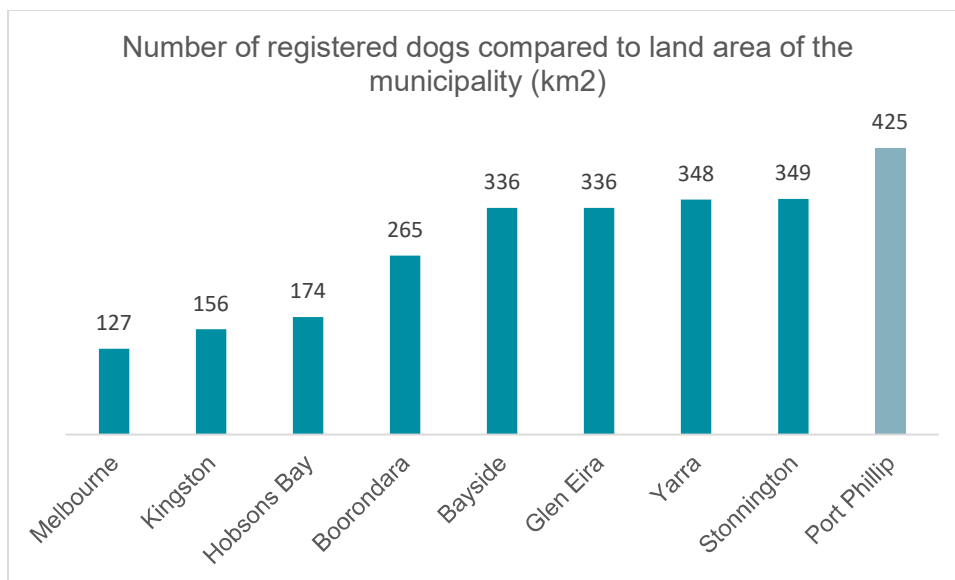
The number of registered dogs in each municipality is shown in the graph below:



While Port Phillip has a lower number of registered dogs comparatively to other inner Melbourne municipalities, when looking at the number of dogs in relation to population and size of the municipality, it paints a different story. Approximately one in twelve Port Phillip residents own a dog, which as shown in the following graph is similar across other inner Melbourne metropolitan councils (with the exception of the City of Melbourne).



When looking at the number of registered dogs in relation to the size of the municipality, CoPP has the highest density of dogs of all councils benchmarked, with 425 dogs per square kilometre of land (as shown in the graph below). This indicates a challenge, perhaps experienced more intensely for CoPP than other municipalities.

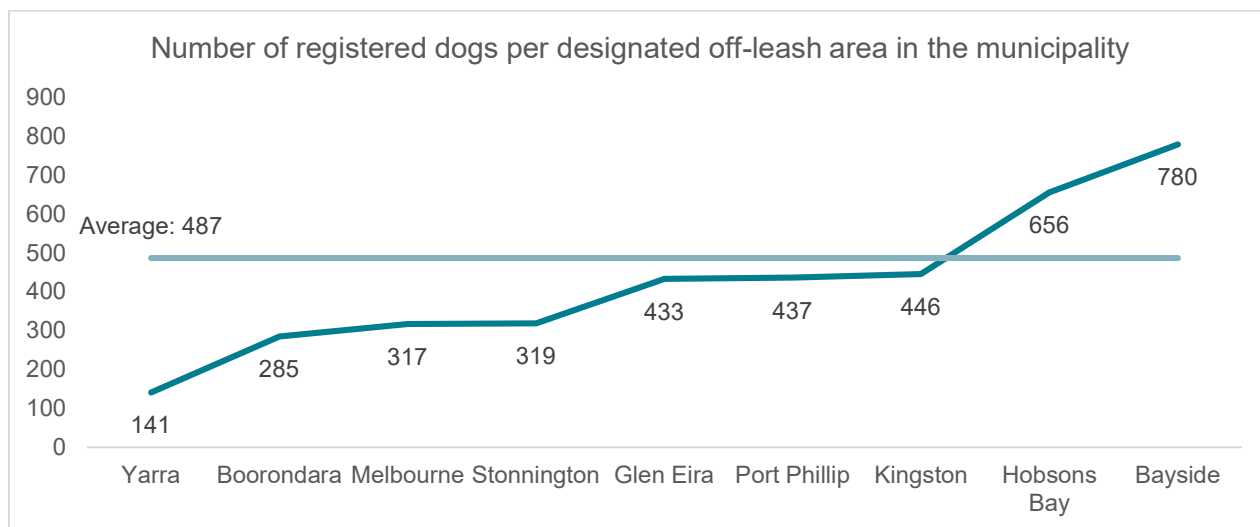


When looking at the number of registered dogs per hectare of open space in the municipality (as shown in figure 11.), CoPP sits in the middle range at 25 registered dogs per hectare of open space (with Kingston, Yarra, Boroondara and Bayside all within the 25-30 range) indicating that many Councils are experiencing similar challenges in providing space for dogs to exercise on and off-leash and managing multiple uses of open space.

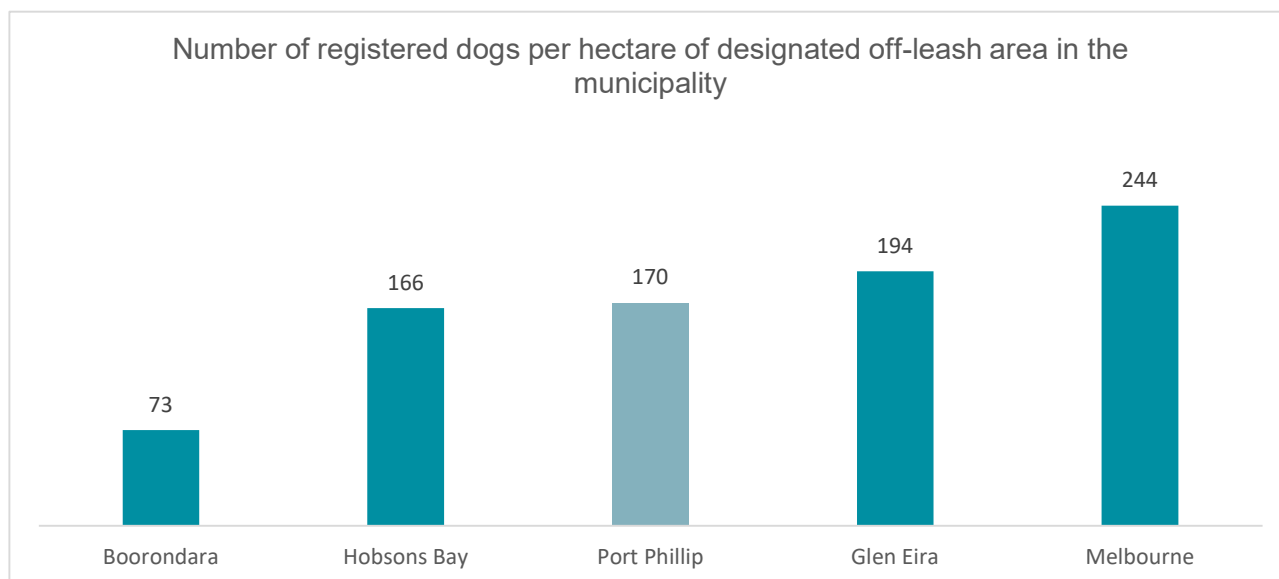
The neighbouring residents of Stonnington and Glen Eira have a much higher number of registered dogs per hectare of open space so residents may seek out public open space in neighbouring LGA that are less in demand for dog off-leash exercise.

Appendix 8. The provision of dog off-leash areas in other inner Melbourne metropolitan Councils

The graph below shows that CoPP's current provision of dog off-leash spaces in terms of number of dogs per space is in the middle range and slightly below the council average of 487 dogs per off-leash space. This means that City of Port Phillip is currently providing more off-leash space per dog than the average provided by the other councils benchmarked.



However, the size of the dog off-leash spaces can vary significantly, so a more accurate indication of provision is the total area of dog off-leash space in the municipality compared to the number of registered dogs. Four of the councils benchmarked were able to provide this information (Boroondara, Glen Eira, Hobsons Bay and Melbourne). CoPP has 170 registered dogs per hectare of off-leash area provided. The graph below shows that when compared to other councils, CoPP's current provision of dog off-leash area was in the middle, providing more dog off-leash space per registered dog than our neighbouring councils of Glen Eira and the City of Melbourne, but less than Boroondara and Hobsons Bay.



Appendix 9. Other Council's provision of fully enclosed dog off-leash spaces and dog parks.

Some of these spaces are designated for dogs and provide specialised equipment and fencing, while others are open space areas that support multiple uses. The size of these spaces varies significantly between sites, depending on the space available. The average size of fully fenced dog off-leash spaces was 40,088m². However, when removing three sites in Hobsons Bay that are much larger than all other spaces (and therefore considered outliers), the average size of fully fenced dog off-leash spaces was 5,107m². The average size of the sites considered to be specialised dog parks was slightly smaller at 5,054 m² but ranged from as small as 560m² to 9,261m². Of the eight councils benchmarked, half distinguished between big dog and little dog areas in their dog parks and half did not.

LGA	Name/Location	Type of space	Size Hectares
Bayside	Wishart Reserve	Fenced dog park with specialised dog facilities	0.93
	Sandown Street Beach	Fenced area of foreshore	1.76
Boroondara	Gordon Barnard Reserve Fenced Dog Play Area	Fenced dog park with specialised dog facilities	0.64
Glen Eira	Caulfield Wedge - Pawfield Park	Fenced dog park with specialised dog facilities	0.06
Hobsons Bay	Brooklyn Reserve Dog Park	Fenced dog park with specialised dog facilities	0.32
	Doug Grant Reserve	Fenced Open space	12
	Riverside Park, Newport (not gazetted)	Fenced Open space	23
	PA Burns Reserve	Fenced Open space	26
	GJ Hosken Reserve	Fenced Open space	5
Kingston	Roy Dore Reserve	Fenced dog park with specialised dog facilities	0.85
	Reg Marlow Reserve	Fenced Open space	0.12
	Spring Road Reserve	Fenced Open space	0.40
	Iluka Reserve	Fenced Open space	0.53
	Haughton Road Reserve	Fenced Open space	0.08
Melbourne	Clayton Reserve	Fenced dog park with specialised dog facilities	0.65

	Eades Park	Fenced Open space	0.21
	Kings Way and Moray St Reserve	Fenced dog park with specialised dog facilities	0.06
Stonnington	Thomas Oval Dog Park	Fenced dog park with specialised dog facilities	Not provided
	Toorak Park	Fenced sports ground	Not provided
	Malvern Cricket Ground	Fenced sports ground	Not provided
Yarra	Curtain Square	Fenced Open space	Not provided
	Citizen's Park	Fenced sports ground	Not provided
	Victoria Park	Fenced sports ground	Not provided

Types of dog facilities by LGA

Appendix 10. Beach Provision benchmarking for other bayside Councils

LGA	Seasonal differences	Beach Restrictions		Off-leash provision
		Summer	Winter	
Bayside	Yes	<ul style="list-style-type: none"> • 11 sections of beach that have timed restrictions for on-leash, off-leash and dog prohibited that are different depending on the section of the beach • 1 section of beach that is dog prohibited at all times • 2 sections of beach that are dog off-leash at all times 	<ul style="list-style-type: none"> • 11 sections of beach that are dog off-leash at all times • 3 sections of beach that are dog on-leash at all times 	<ul style="list-style-type: none"> • 5 x beaches are off-leash from 7:30pm - 10am in summer • 3 x beach are off-leash from sunrise - 10am in summer • 11 of 14 beaches are off-leash at all times during winter
Hobsons Bay	Minimal	<ul style="list-style-type: none"> • Dogs must be on leash at all times on all beaches • Dogs are not permitted at Williamstown Beach and Altona Beach from 10:00am – 9:30pm 	Dogs must be on leash at all times on all beaches	No provision
Kingston	Yes	<ul style="list-style-type: none"> • Most sections of beach have timed on and off leash restrictions: <ul style="list-style-type: none"> - Sunrise - 10am off leash - 10am - 7:30pm dog prohibited - 7:30pm - Sunrise on leash area 	<ul style="list-style-type: none"> • Most sections of beach have timed on and off leash restrictions: <ul style="list-style-type: none"> - 11am-3pm on leash - All other times off leash • 1 section of beach is off-leash all year round 	<ul style="list-style-type: none"> • 1 x 24-hour all year round off leash area All beaches: <ul style="list-style-type: none"> • Sunrise - 10am in summer • 4pm-10am in winter

		<ul style="list-style-type: none"> • 1 section of beach is off-leash all year round • 1 section of beach is dog prohibited all year round 	<ul style="list-style-type: none"> • 1 section of beach is dog prohibited all year round 	
Wyndham	No	Dogs must be on leash at all times on all beaches	Dogs must be on leash at all times on all beaches	No provision
Port Phillip	Yes	<ul style="list-style-type: none"> • 5 sections of beach that are dog off-leash at all times • 2 section of beach where dogs are permitted with timed restrictions • 8 sections of beach dogs prohibited (2 are dog prohibited all year round) 	<ul style="list-style-type: none"> • 2 sections of beach that are dog prohibited at all times • All other of sections of beach are dog off-leash 	<ul style="list-style-type: none"> • 5 x beaches are off-leash at all times • 1 x beach 7:30pm-10am in summer • 1 x beach 5:30am-9:30am in summer • 13 of 15 beaches are dog off-leash during winter

Beach restrictions and off-leash provision by LGA

