

HEDGE PLANTING

Magnolia grandiflora 'Teddy Bear'



A dense, evergreen cultivar with fragrant white flowers that bloom in summer. A row of *Magnolia* 'Teddy Bear' will be planted approximately 600mm from the neighbouring property boundary, as a screening hedge.

At planting, trees will be 1.6 to 1.8 metres high and will be pruned to maintain a 1.8 metre height.



Proposed hedge planting of *Magnolia grandiflora* 'Teddy Bear'

TREE PLANTING

Lagerstroemia indica 'Tuscarora'; Crepe Myrtle



A small to medium sized deciduous tree reaching 8 metres in height. Pannicles of long lasting, deep pink flowers bloom in summer. Green foliage changes to an orange-red colour in autumn. 'Tuscarora' cultivar is the fastest growing of the Crepe myrtle hybrids, growing up to 2 metres a year.

Neville Street Reserve Update

Consultation

The City of Port Phillip gathered ideas for the reserve upgrade in late 2012 and presented two concept plans to the community earlier this year. An onsite consultation was held to find out what the community thought of the plans and which option they preferred. Information was also collected online on Council's Have Your Say page. Updated concepts have been developed to reflect the conversations we had with the community.

Key themes

Some consistent points came through in the feedback we received:

- Grade the reserve to create a flat grass area.
- More trees and grass but remove the inappropriate and 'scrappy' trees.
- Cater the play area to younger children.
- Have distinct areas for play and passive recreation.
- Address the boundary between the park and adjacent residence.

Next Steps

Complete the survey enclosed or go online to provide your comments and feedback on Council's Have Your Say page:

www.portphillip.vic.gov.au/haveyoursay

Project timelines

- September 2013- Hedge planted to section of boundary
- September - Oct 2013- Detailed documentation and drawings
- November - December 2013 - Tender process
- February/March 2014 - Commence construction

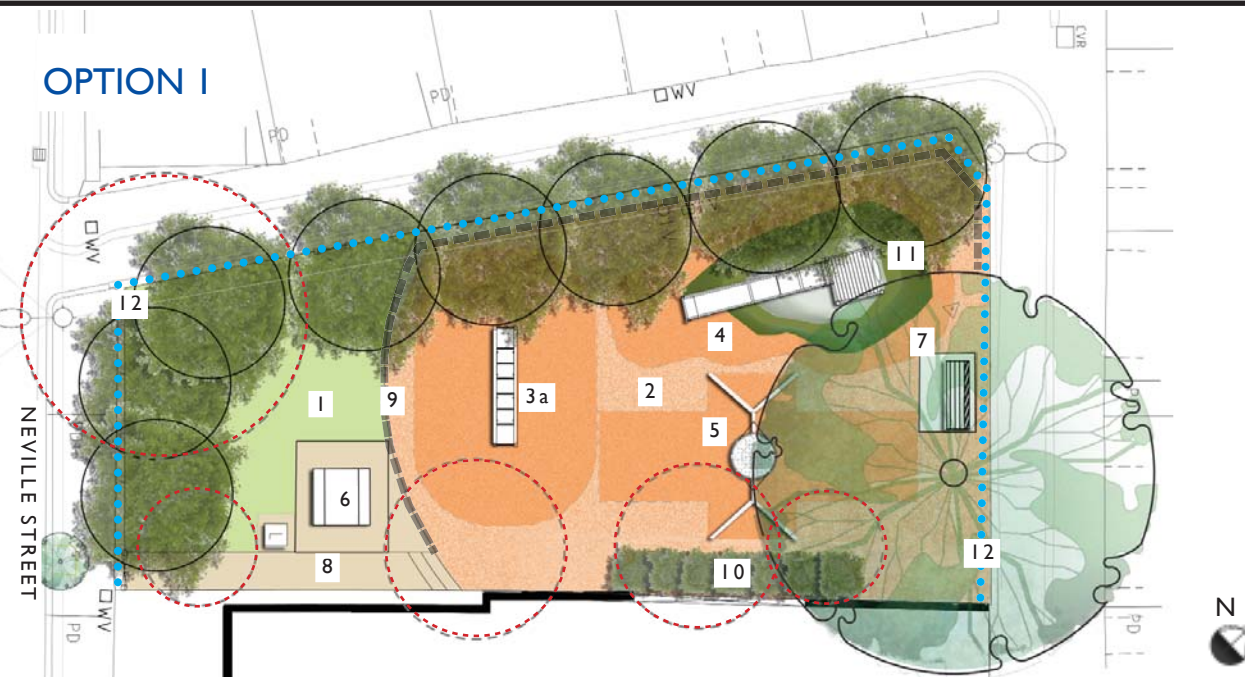
For further information contact:

email ospace@portphillip.vic.gov.au or phone ASSIST on 9209 6777.



Design plan options

OPTION 1



Option 1 Play Equipment



3a monkey bars

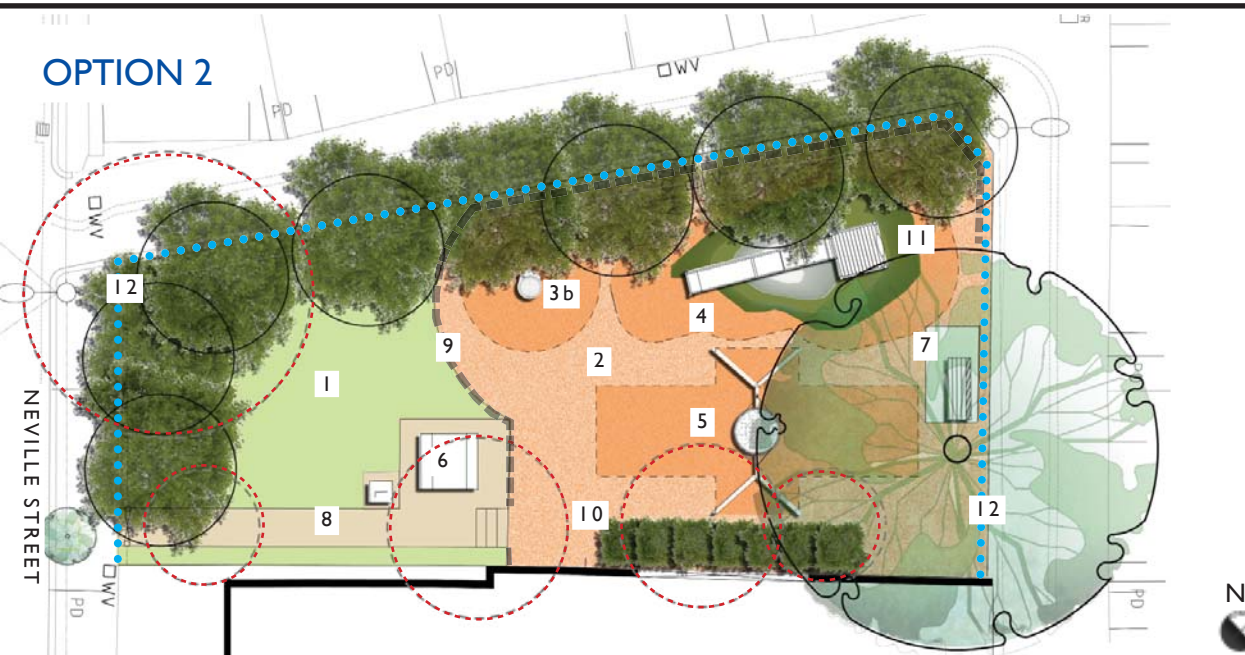


4 basket swing



5 embankment slide

OPTION 2



Option 2 Play Equipment



3b spinner bowl



4 basket swing



5 embankment slide

LEGEND:

- | | | |
|----------------------------------|---|--------------------|
| 1. Flat lawn area | 7. Seating | Existing Tree |
| 2. Raised play area | 8. Paved area | Tree to be removed |
| 3a. Monkey bar | 9. Retaining wall to raised play area | New Tree |
| 3b. Spinner bowl | 10. Hedge | |
| 4. Embankment slide | 11. Mound | |
| 5. Basket swing | 12. New perimeter fence to three sides. | |
| 6. Picnic table with bench seats | | |

PLAY EQUIPMENT



MONKEY BARS - recommended age group: 4+ years

Children train their upper-body and their coordination skills on this activity. They learn to plan their movement and at the same time train their muscles (arms, chest and back) and improve their balance skills. As a result of the agile movements demanded by the play equipment, they also train their sense of rhythm. The monkey bars are timber framed with steel rungs. Small footholds are located on the inside of the timber posts.



SPINNER BOWL - recommended age: 4 -15 years

The Spinner Bowl makes the world go round and round! Hop in, pump your legs and spin. The Spinner Bowl trains balance skills while securing the child in its generous depth. When the bowl is filled with loose material and spun in either direction, the force of rotation pushes the material from the centre and out through a drain hole. A useful tool in understanding centrifugal force and gravity.



BIRD'S NEST SWING - recommended age: 1+ years

A steel and timber swing frame with a basket style seat suitable for single or multiple users. Swinging can range from a gentle hammock style sway, to a wild ride as controlled by the user.



EMBANKMENT SLIDE - recommended age: 2+ years

A timber and steel slide positioned atop a mound. The mound will be landscaped with smooth-edged boulders for climbing possibilities.

Image at left is an example of an embankment slide in St.Kilda.