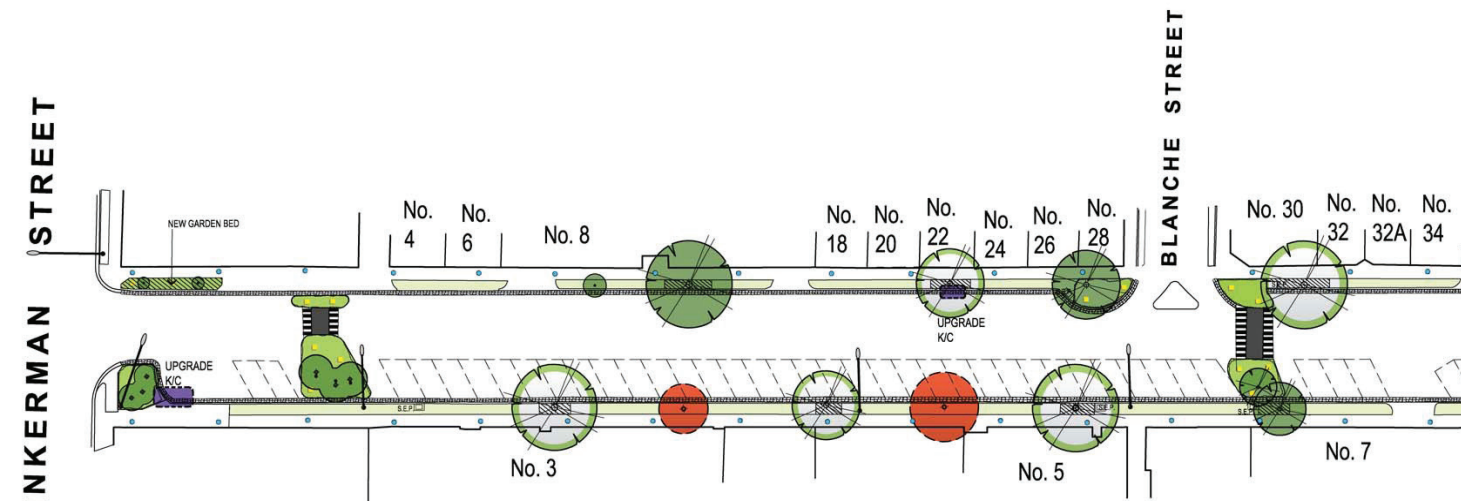
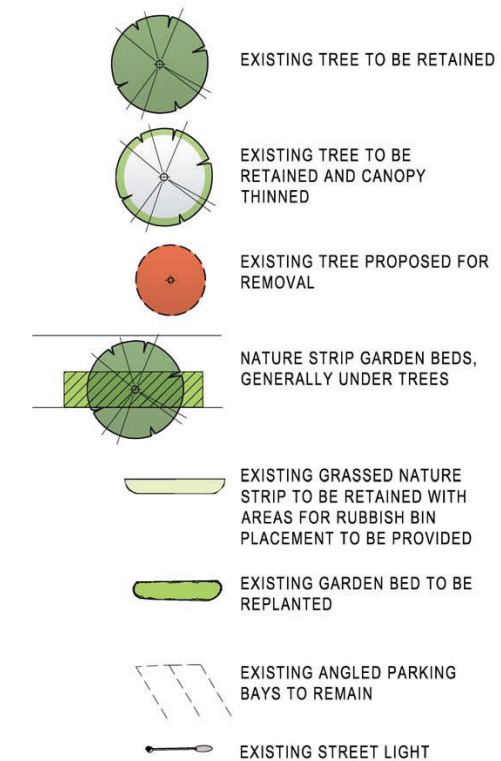


GREEVES STREET



LEGEND



UPGRADE K/C
SECTION OF EXISTING BLUESTONE KERB AND CHANNEL TO BE RESET TO ALLEVIATE FLOODING

EXISTING SPEED HUMP BRICKWORK TO BE REMOVED AND REPLACED AND LINEMARKING TO BE UPGRADED

DRAINAGE IN THIS AREA CURRENTLY BEING ASSESSED TO DETERMINE SPECIFIC IMPROVEMENTS TO THE DRAINAGE INFRASTRUCTURE

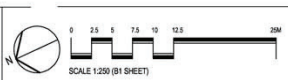
EXISTING AREA PRONE TO FREQUENT AND SIGNIFICANT FLOODING

PROPOSED WAYFINDING PATTERNS

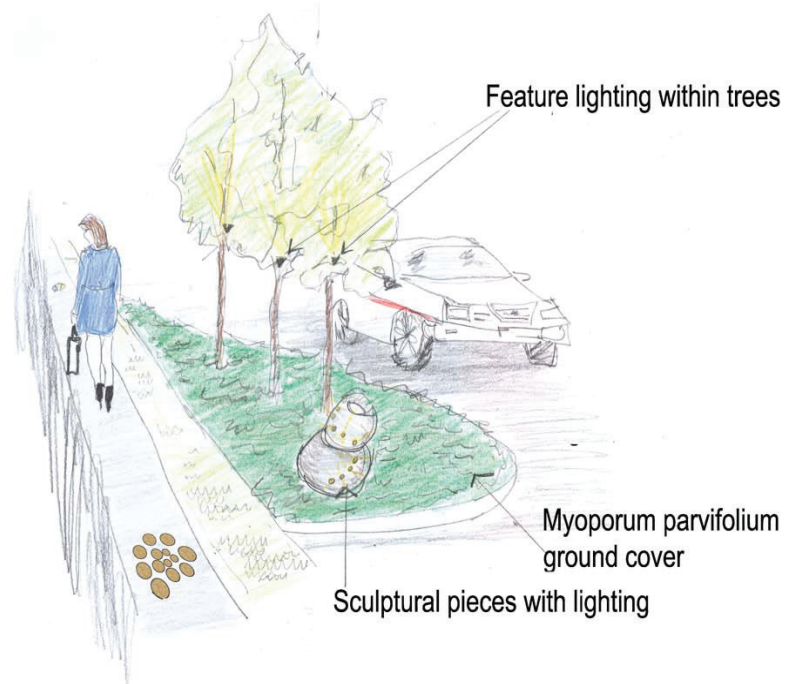
PROPOSED FEATURE LIGHTING WITHIN GARDEN BEDS- COMBINATION OF SCULPTURAL PIECES WITH LIGHTING, ROCKS WITH EMBEDDED LIGHT OR LOW TIMBER LIGHTS

MICHAEL SMITH & ASSOCIATES
LANDSCAPE ARCHITECTURE AND DESIGN

Office: 1st Floor, 407 Whitehorse Road, Balwyn 3103
Post: 5 Jarvis Street, Camberwell 3124
Tel: 9830 0414
Fax: 9830 2355
Mobile: 0418 172 883
Email: mika@mslandurb.com.au
www.mslandurb.com.au

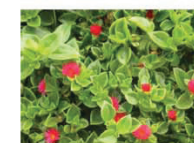


Feature lighting within trees



PROPOSED PLANT SELECTIONS

The existing planting within garden beds will be removed and replaced with a variety of hardy plants below.



"Baby sunrose"
Aptenia cordifolia



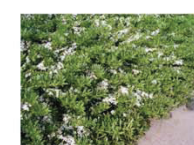
Grevillea "Royal Mantle"



"Orange pigface"
Lampranthus aurantiacus



"Dwarf cushion bush"
Leucophytia brownii



"Creeping boobialla"
Myoporum parvifolium



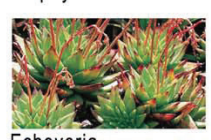
"Stonecrop"
Sedum



"Round leaf pigface"
Disphyma crassifolium



"Tree aeonium"
Aeonium arboreum

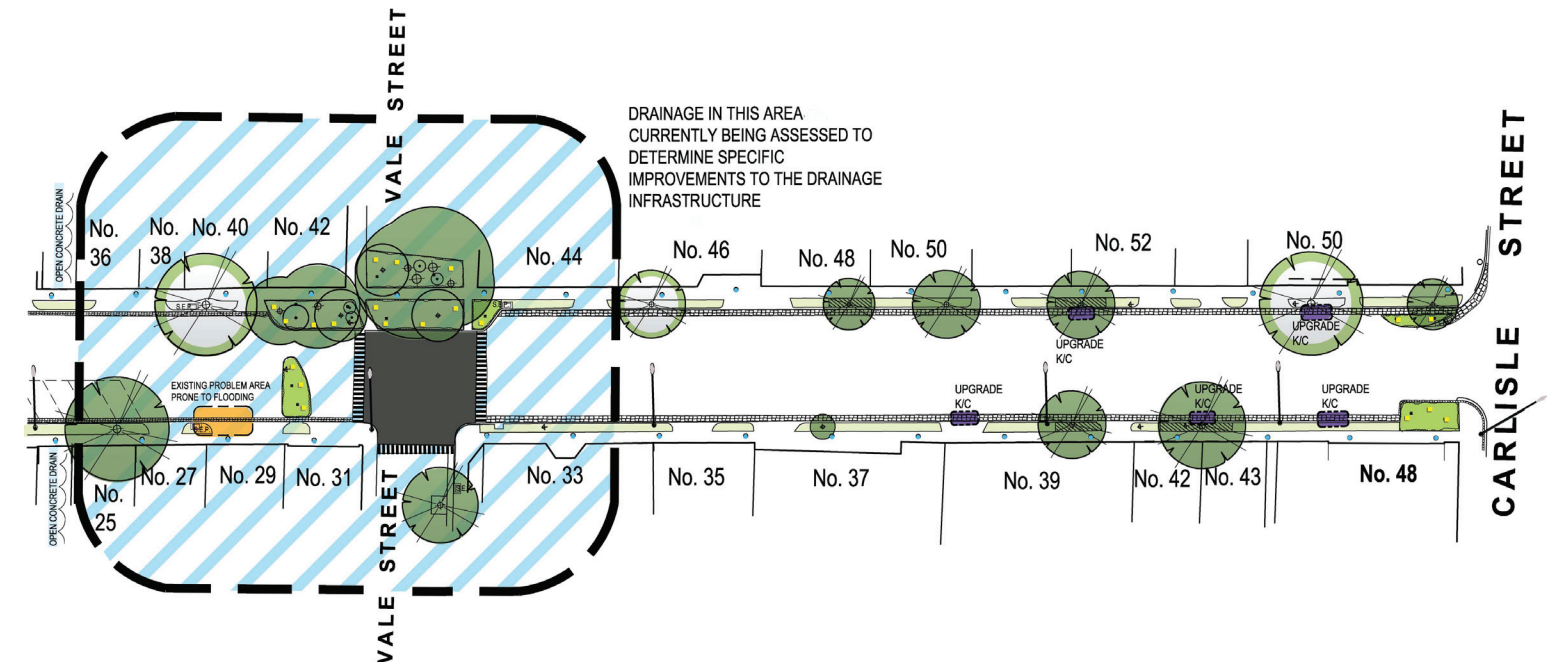


Echeveria



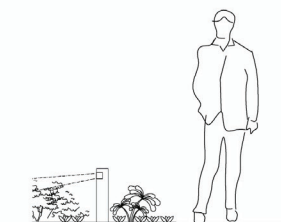
"Common everlasting daisy"
Chryscephalum apiculatum

STREETSCAPE UPGRADE - CONCEPT DESIGN

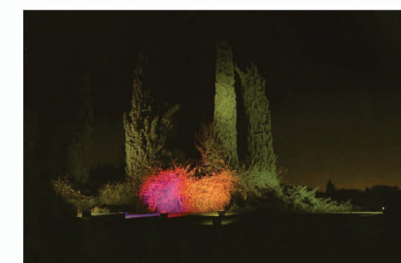


PROPOSED LIGHTING SELECTIONS

Timber/concrete low lights



Combination of uplighting within feature trees and low level lighting



Pruning of some tree canopies to improve lighting

Low timber posts with side lighting

Wayfinding features within existing footpath

PROPOSED WAYFINDING FEATURES

Wayfinding features will be embedded in existing footpaths at 8-15m intervals.

