

# Next steps

Feedback on the concept plan options

## Survey form included

Fill in the form and email or post back to City of Port Phillip

## Online

City of Port Phillip - Have your say website  
[haveyoursayatportphillip.net.au](http://haveyoursayatportphillip.net.au)

## On site consultation

Wednesday 28th May 2:30 - 4:30 pm

## Email

[ospace@portphillip.vic.gov.au](mailto:ospace@portphillip.vic.gov.au)

## Phone

9209 6777

## Staging of works / design changes

Construction of Little Finlay Reserve will take place in 2014/15 financial year. Implementation of works is subject to funding approval.

Concept designs are subject to change at Council discretion due to detailed design or consultation outcomes.

The play pieces presented are examples and are subject to change at Council's discretion.

Have your say on

# Little Finlay Reserve

## Consultation

Council has developed concept designs in response to the initial community feedback. Tell us if we have got it right before we upgrade the reserve.

In October 2013 City of Port Phillips initial consultation included:

- one on site consultations at the reserve
- online survey through City of Port Phillips Have Your Say website

The community feedback submitted to City of Port Phillip indicated the reserve is used by young families and adults. The community likes the hidden and private feeling of the reserve and some example of the feedback about the reserve is below:

"Tucked away, green surprise, great space for little children and families and it has some shade when it's hot."

"It's a rare open space in the middle of homes/units/townhouses"

"It's tucked away, cute, private, quiet and underutilised."

"Convenient, close to home"

"Hidden and cute"

"Green space in otherwise treeless street, provides visual relaxation"

"It is also quiet, away from busy road and pedestrian traffic. I feel safe leaving my pram to go and play."



♻️ Printed on 100%

Australian made recycled paper



For further information contact:

Stacey Robinson - email: [ospace@portphillip.vic.gov.au](mailto:ospace@portphillip.vic.gov.au) or phone: 9209 6777



# What we heard... Concept design options...

## Below are key themes identified by the community

### Picnic opportunities

The majority of respondents were keen to see a picnic table included in the design.

Both concept design options include a picnic table with wheelchair access.

### Play opportunities

There was overwhelming support for the inclusion of a swing. There were also requests for cubby or structures with activities and a slide coming from them. Nature play through the inclusion of planting was also dominant.

A swing has been included in both concepts, with large fall zone areas. Both options offer:

- climbing structures
- slides

low level planting to provide an feeling of inclosure and interest in texture and colour

rocks and timber steppers to provide interaction with natural materials.

### Fencing for the park

Many community members felt the existing fencing could be removed. Whilst others felt the reserve required more secure fencing however also recognised the the road traffic in surrounding streets was relatively low speed and frequency.

A small section of fencing will be provided on Little Finlay st as shown on the drawings.

### Other comments

A few respondents were keen for the inclusion of some vegetable growing opportunities as part of the upgrade.

The available space limited the ability to included growing opportunities without the loss of play equipment. The nearest community garden is the Mary and Basil Community Garden is located behind the Mary Kehoe Community Centre, at 224 Danks St, Albert Park.

## Option 1 - Swans theme climbing frame and basket swing



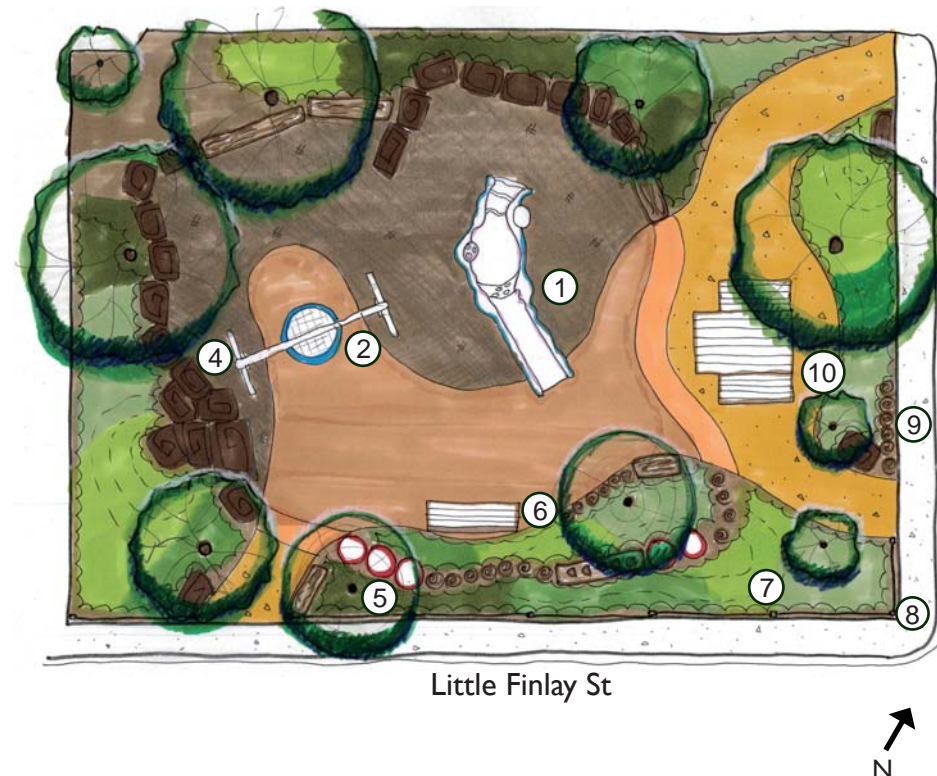
- ① Artistic play unit - Swan theme representing the swans seen on Albert park lake.

Includes:

- slide
- crawl tunnel,
- swans nest with eggs
- other animals such as frogs



- ② Basket swing. Suitable for all ages including babies, toddlers and people with disabilities.



All options include



- ④ rocks



- ⑤ pavers



- ⑥ seat



- ⑦ new planting

- ⑧ new fence



- ⑨ timber steppers



- ⑩ timber picnic table

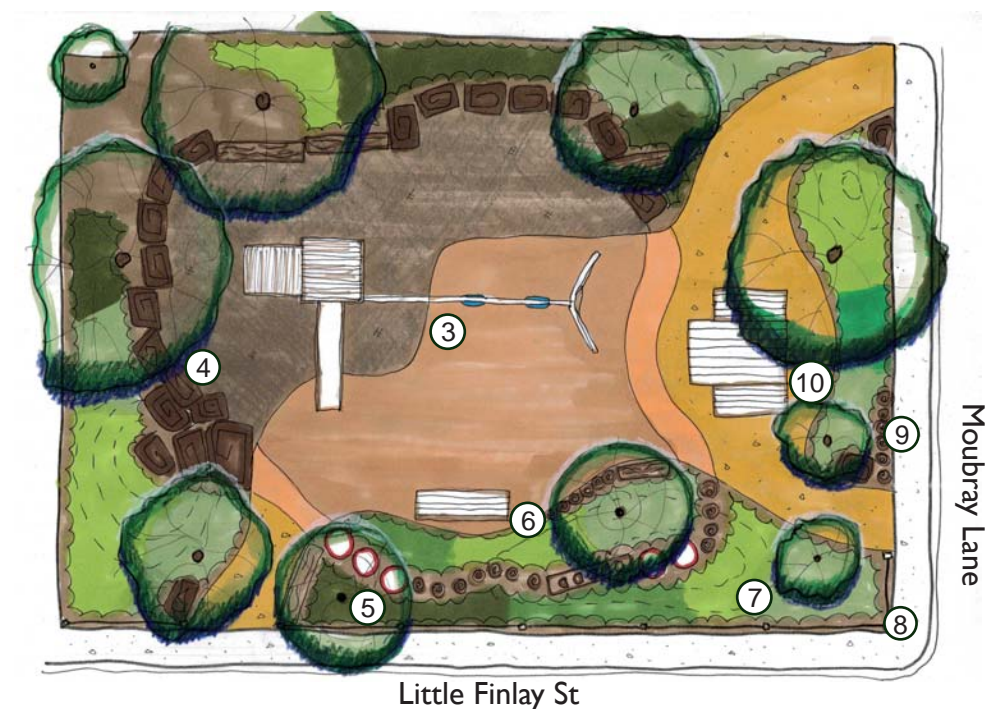
## Option 2 - Standard play unit



- ③ Play unit -

Includes climbing opportunity to platform with slide.

Two swings, one to be a baby seat.



See the next page on how to vote