

Activities and Uses Objective 1:

Protect and enhance local strengths such as heritage, mid rise built form and genuine mix of land uses.

Providing detailed planning policy to guide decision making

This Structure Plan will inform a new place based local policy for South Melbourne in the Port Phillip Planning Scheme that provides updated direction to support South Melbourne as a vibrant, diverse, accessible, and high amenity Major Activity Centre and Enterprise Precinct. The new policy in the Port Phillip Planning Scheme will help implement the strategic vision for South Melbourne by providing specific direction on economic development, built form, heritage, movement and access and the public realm. It will also reinforce South Melbourne's role as a Major Activity Centre and Enterprise Precinct, in line with State Planning Policy direction.

Further detail about new built form controls is in Theme 2: Built Form and Building Design.

Protecting South Melbourne's heritage

South Melbourne's heritage, which also encompasses that of the traditional custodians of the land, is a vital component of South Melbourne's identity and story. This Structure Plan aims to honour and celebrate South Melbourne's rich heritage, both its tangible and intangible aspects, wherever possible.

New built form controls set out in the South Melbourne Structure Plan will

continue to protect and enhance South Melbourne's heritage character by setting out parameters for new development, including both existing heritage buildings and infill development, within and abutting heritage areas. It will do this by implementing the recommendations of the *City of Port Phillip Stage 2 Heritage Review: South Melbourne* (Trethowan, 2023) to address gaps in the Heritage Overlay will protect places assessed as being of local significance. These places are set out in Figure 10. Further detail about new built form controls and heritage is in Theme 2: Built Form and Building Design.



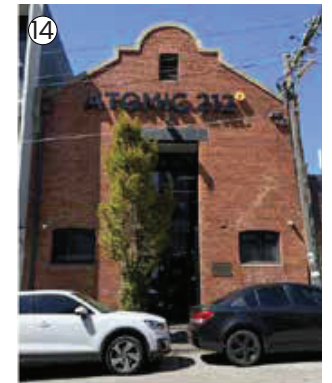
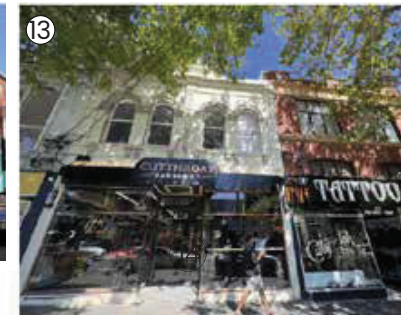


Figure 10 – Places recommended to be included in the Heritage Overlay